

Shelby County Sheriff's Office

September 2017 Jail Report Card

*** Due to the implementation of new systems, some of the information obtained in this report were not readily available for the month of September and the data will be skewed.**

Shelby County Sheriff's Office

September 2017 Jail Report Card



Jail Population Report

September-17

| Jail Population Stats | This Month to Last Month | | | | Same Month Last Year | | | Year to Date (Last Year/This Year) | | | |
|--|--------------------------|--------|-------|--------|----------------------|-------|--------|------------------------------------|-------|--------|--------|
| | Sep-17 | Aug-17 | (+/-) | % Chng | Sep-16 | (+/-) | % Chng | 2017 | 2016 | (+/-) | % Chng |
| Average Daily Population by Facility ¹ | 2843 | 2738 | 105 | 4% | 2759 | 84 | 3% | 2711 | 2645 | 66 | 2% |
| 201 Poplar | 2423 | 2351 | 72 | 3% | 2442 | -19 | -1% | 2337 | 2329 | 9 | 0% |
| Jail East | 329 | 305 | 24 | 8% | 256 | 73 | 29% | 287 | 254 | 33 | 13% |
| Juvenile Court Detention | 91 | 82 | 9 | 11% | 61 | 30 | 49% | 86 | 62 | 24 | 38% |
| ADP by Gender (201 & JE) ¹ | 2752 | 2656 | 96 | 4% | 2698 | 54 | 2% | 2333 | 2583 | -250 | -10% |
| Male | 2452 | 2382 | 70 | 3% | 2455 | -3 | 0% | 2098 | 2338 | -240 | -10% |
| Female | 300 | 274 | 26 | 9% | 243 | 57 | 23% | 235 | 244 | -9 | -4% |
| ADP Juveniles (Jail East) ¹ | 28 | 31 | -3 | -10% | 13 | 15 | 115% | 22 | 10 | 12 | 129% |
| Male | 28 | 31 | -3 | -10% | 13 | 15 | 115% | 22 | 10 | 12 | 129% |
| Female | 0 | 0 | 0 | 0% | 0 | 0 | 0% | 0 | 0 | 0 | 0% |
| Total Bookings (No Quick Books) | 3246 | 3292 | -46 | -1% | 3636 | -390 | -11% | 26063 | 33719 | -7656 | -23% |
| 201 Poplar | 2385 | 2507 | -122 | -5% | 2760 | -375 | -14% | 19462 | 25511 | -6049 | -24% |
| Jail East | 861 | 785 | 76 | 10% | 876 | -15 | -2% | 6601 | 8208 | -1607 | -20% |
| Juvenile Bookings - Tried as Adult | 5 | 6 | -1 | -17% | 1 | 4 | 400% | 47 | 26 | 21 | 81% |
| Male | 5 | 6 | -1 | -17% | 1 | 4 | 400% | 47 | 26 | 21 | 81% |
| Female | 0 | 0 | 0 | 0% | 0 | 0 | 0% | 0 | 0 | 0 | 0% |
| No Prior Incarcerations ² | 293 | 299 | -6 | -2% | 460 | -167 | -36% | 2162 | 4174 | -2012 | -48% |
| Recidivist Inmates ² | 2092 | 2208 | -116 | -5% | 3176 | -1084 | -34% | 15945 | 29545 | -13600 | -46% |
| Total Number Released (No Quick Releases) | 3080 | 3362 | -282 | -8% | 3607 | -527 | -15% | 26017 | 33395 | -7378 | -22% |
| 201 Poplar | 2295 | 2541 | -246 | -10% | 2750 | -455 | -17% | 19491 | 25233 | -5742 | -23% |
| Jail East | 785 | 821 | -36 | -4% | 857 | -72 | -8% | 6526 | 8162 | -1636 | -20% |
| Average Length of Stay | 27.0 | 23.9 | 3.0 | 13% | 23.0 | 3.9 | 17% | 18.2 | 21.2 | -3.0 | -14% |
| Male (days) | 32.5 | 28.0 | 4.5 | 16% | 27.6 | 4.9 | 18% | 21.7 | 25.4 | -3.7 | -15% |
| Female (days) | 11.6 | 11.0 | 0.6 | 5% | 8.6 | 3.0 | 35% | 8.0 | 8.3 | -0.3 | -3% |
| Released Inmates - Over 72 Hours in Jail | 35% | 41% | -6% | -15% | 39% | -4% | -10% | 34% | 37% | -3% | -8% |
| Males | 43% | 44% | -1% | -2% | 43% | 0% | 0% | 41% | 41% | 0% | 0% |
| Females | 26% | 30% | -4% | -13% | 26% | 0% | 0% | 26% | 27% | -1% | -4% |
| Released Inmates - Length of Stay (Over 72 Hours) | 47 | 59 | -12 | -20% | 55 | -8 | -15% | 41 | 54 | -13 | -23% |
| Males | 58 | 56 | 2 | 4% | 58 | 0 | 0% | 44 | 59 | -16 | -26% |
| Females | 36 | 44 | -8 | -18% | 37 | -1 | -3% | 31 | 28 | 3 | 9% |
| 201 - Avg. Booking Process Time | 0.00 | 0.00 | 0.00 | 0% | 3.86 | -3.86 | -100% | 0.0 | 3.9 | -3.9 | -100% |
| JE - Avg. Booking Process Time | 0.00 | 0.00 | 0.00 | 0% | 2.52 | -2.52 | -100% | 0.0 | 2.3 | -2.3 | -100% |
| Misdemeanor Citations Issued | 1871 | 2129 | -258 | -12% | 2736 | -865 | -32% | 19219 | 27280 | -8061 | -30% |
| Legal Status | 0 | 0 | 0 | 0% | 2658 | -2658 | -100% | 0 | 22905 | -22905 | -100% |
| Pre-trial | 0 | 0 | 0 | 0% | 2327 | -2327 | -100% | 0 | 20074 | -20074 | -100% |
| Sentenced | 0 | 0 | 0 | 0% | 153 | -153 | -100% | 0 | 1329 | -1329 | -100% |
| Hold | 0 | 0 | 0 | 0% | 178 | -178 | -100% | 0 | 1502 | -1502 | -100% |
| Avg. No Prior Incarcerations ³ | 293 | 299 | -6 | -2% | 322 | -29 | -9% | 188 | 302 | -114 | -38% |
| Avg. Recidivist Inmates ³ | 2092 | 2208 | -116 | -5% | 2360 | -268 | -11% | 1684 | 2276 | -593 | -26% |
| 1 to 2 Prior Incarcerations | 321 | 379 | -58 | -15% | 412 | -91 | -22% | 282 | 407 | -125 | -31% |
| 3rd Prior Incarceration | 135 | 144 | -9 | -6% | 174 | -39 | -22% | 108 | 168 | -60 | -36% |
| 4 to 5 Prior Incarcerations | 230 | 223 | 7 | 3% | 284 | -54 | -19% | 183 | 268 | -85 | -32% |
| 6 or More Prior Incarcerations | 1406 | 1462 | -56 | -4% | 1490 | -84 | -6% | 1110 | 1434 | -324 | -23% |

Green: decrease Red: increase

¹ Average Daily Population does not include inmates in PW/ER/MMHI.

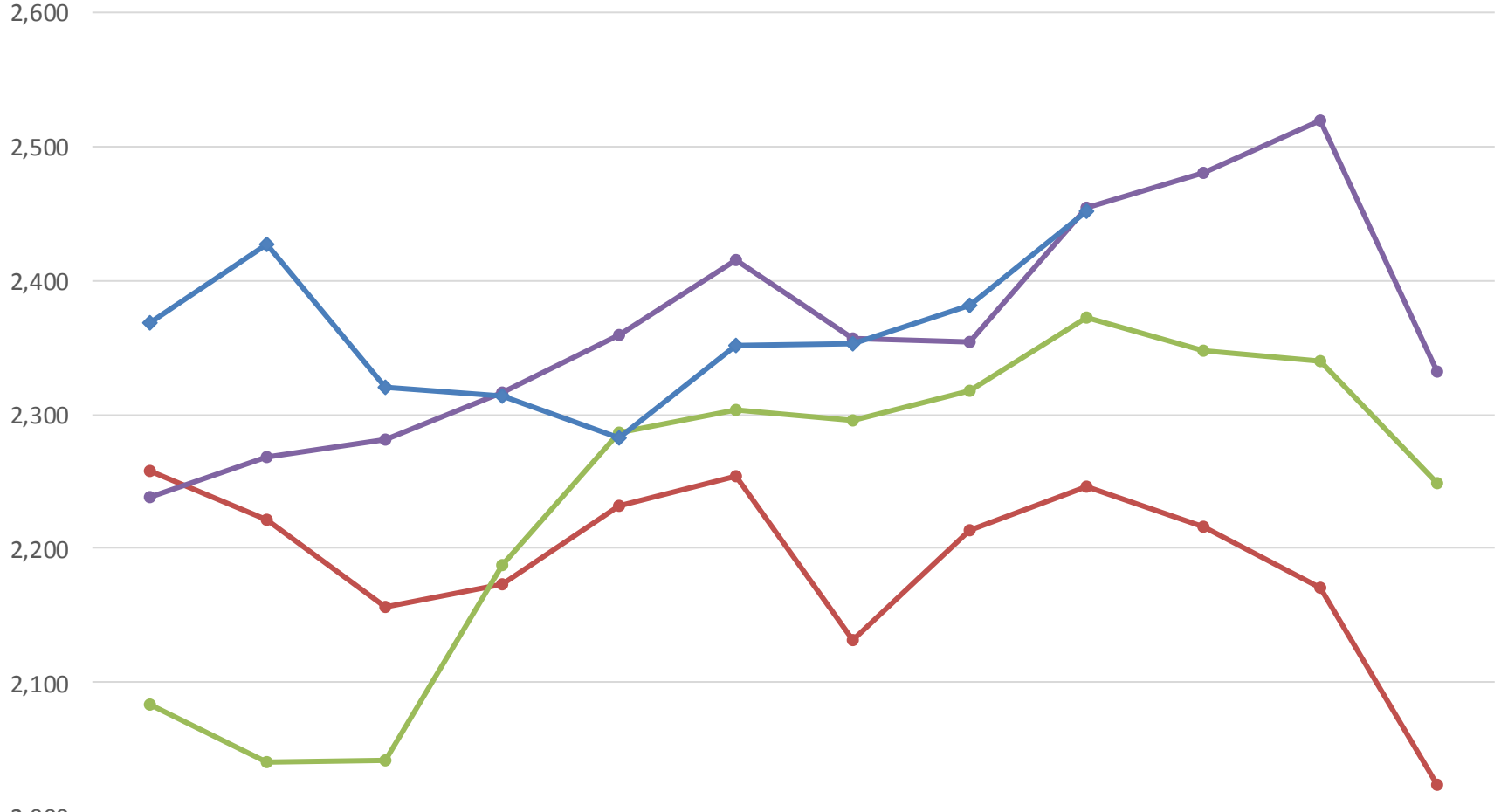
² Numbers are based on Total Bookings.

³ Numbers are based on Average Daily Population.

* Report revised Mar16

Average Daily Population - Males

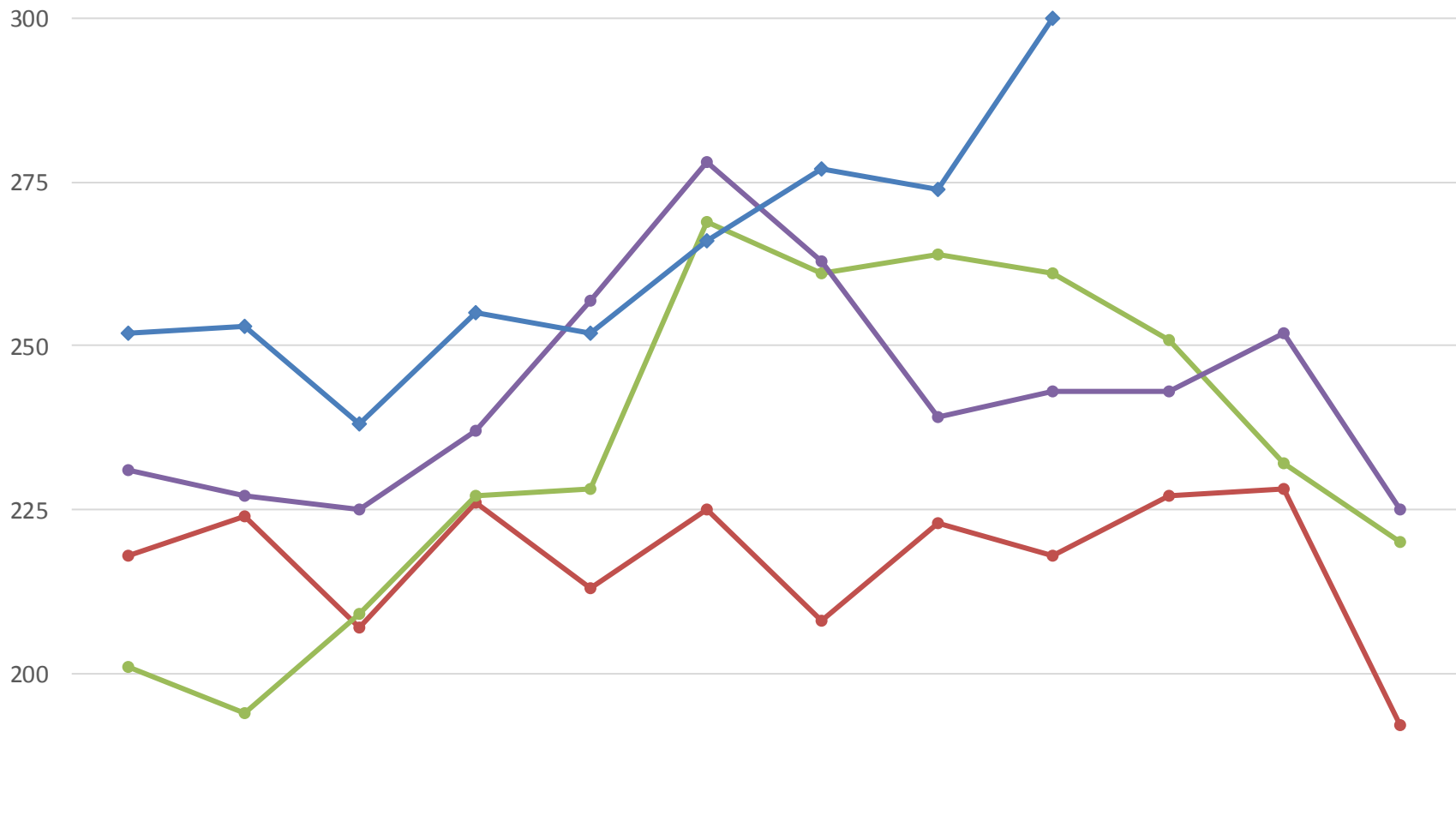
2014 2015 2016 2017



| | Jan | Feb | Mar | Apr | May | Jun | Jul | Aug | Sep | Oct | Nov | Dec |
|------|-------|-------|-------|-------|-------|-------|-------|-------|-------|-------|-------|-------|
| 2014 | 2,258 | 2,221 | 2,156 | 2,173 | 2,232 | 2,254 | 2,132 | 2,213 | 2,246 | 2,216 | 2,171 | 2,024 |
| 2015 | 2,083 | 2,040 | 2,041 | 2,188 | 2,286 | 2,304 | 2,296 | 2,318 | 2,373 | 2,348 | 2,340 | 2,249 |
| 2016 | 2,238 | 2,268 | 2,281 | 2,317 | 2,359 | 2,416 | 2,357 | 2,354 | 2,455 | 2,481 | 2,520 | 2,332 |
| 2017 | 2,368 | 2,427 | 2,321 | 2,314 | 2,282 | 2,352 | 2,353 | 2,382 | 2,452 | | | |

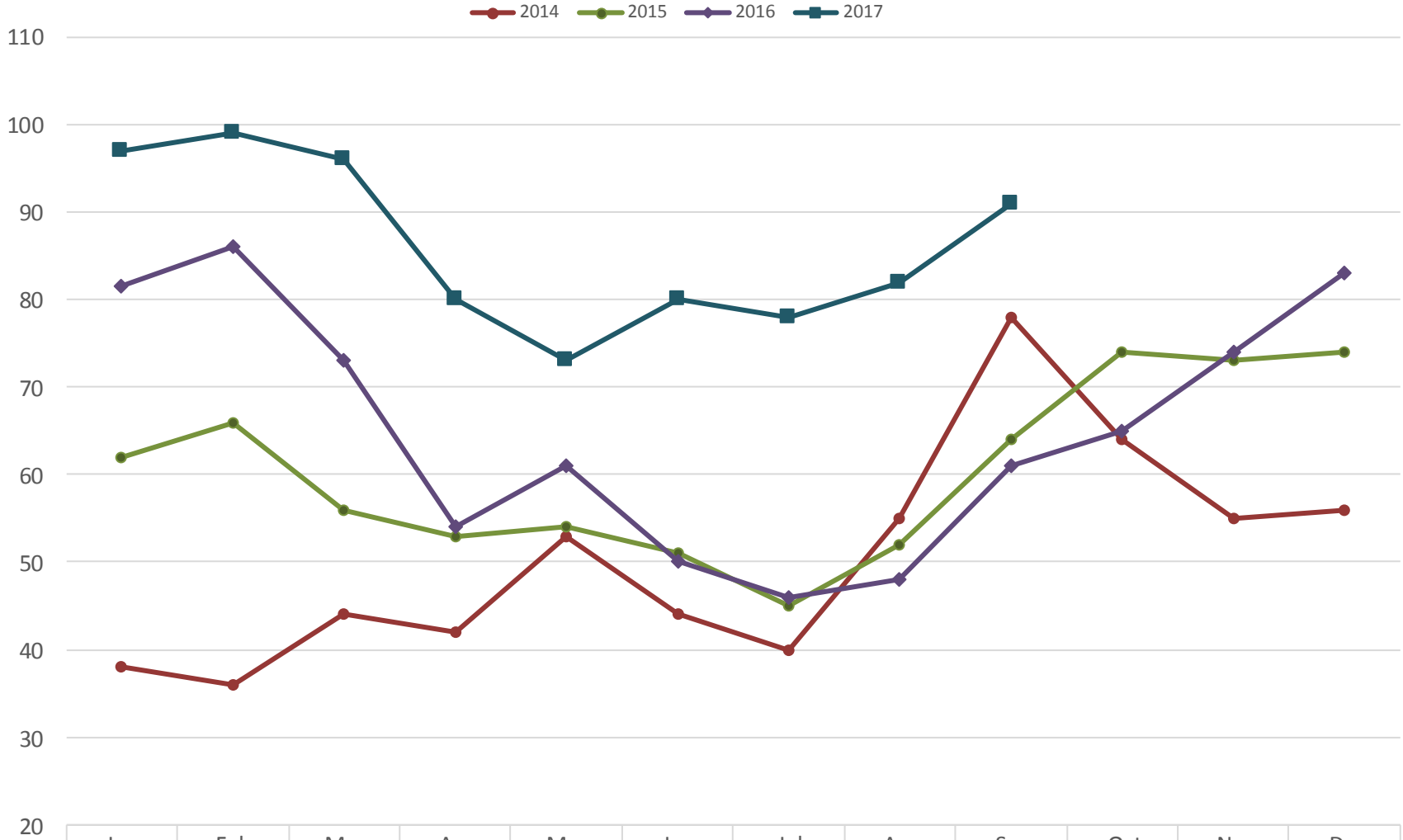
Average Daily Population - Females

2014 2015 2016 2017



| | Jan | Feb | Mar | Apr | May | Jun | Jul | Aug | Sep | Oct | Nov | Dec |
|------|-----|-----|-----|-----|-----|-----|-----|-----|-----|-----|-----|-----|
| 2014 | 218 | 224 | 207 | 226 | 213 | 225 | 208 | 223 | 218 | 227 | 228 | 192 |
| 2015 | 201 | 194 | 209 | 227 | 228 | 269 | 261 | 264 | 261 | 251 | 232 | 220 |
| 2016 | 231 | 227 | 225 | 237 | 257 | 278 | 263 | 239 | 243 | 243 | 252 | 225 |
| 2017 | 252 | 253 | 238 | 255 | 252 | 266 | 277 | 274 | 300 | | | |

Average Daily Population - Juvenile Court Detention



| | Jan | Feb | Mar | Apr | May | Jun | Jul | Aug | Sep | Oct | Nov | Dec |
|------|-----|-----|-----|-----|-----|-----|-----|-----|-----|-----|-----|-----|
| 2014 | 38 | 36 | 44 | 42 | 53 | 44 | 40 | 55 | 78 | 64 | 55 | 56 |
| 2015 | 62 | 66 | 56 | 53 | 54 | 51 | 45 | 52 | 64 | 74 | 73 | 74 |
| 2016 | 82 | 86 | 73 | 54 | 61 | 50 | 46 | 48 | 61 | 65 | 74 | 83 |
| 2017 | 97 | 99 | 96 | 80 | 73 | 80 | 78 | 82 | 91 | | | |

Jail Security Operations Report

September-17

| Jail Sec Ops Stats | This Month to Last Month | | | | Same Month Last Year | | | Year to Date (Last Year/This Year) | | | |
|--|--------------------------|--------|-------|--------|----------------------|-------|--------|------------------------------------|-------|-------|--------|
| | Sep-17 | Aug-17 | (+/-) | % Chng | Sep-16 | (+/-) | % Chng | 2017 | 2016 | (+/-) | % Chng |
| Total 30 day Entire Area Shakedowns | 201 | 212 | -11 | -5% | 229 | -28 | -12% | 1,992 | 2,099 | -107 | -5% |
| Scheduled Shakedowns | 102 | 102 | 0 | 0% | 102 | 0 | 0% | 918 | 918 | 0 | 0% |
| (Repeat) Scheduled & Unscheduled Shkdw | 99 | 110 | -11 | -10% | 127 | -28 | -22% | 1,074 | 1,181 | -107 | -9% |
| Serious Violent Incidents | 4 | 2 | 2 | 100% | 4 | 0 | 0% | 19 | 14 | 5 | 36% |
| Use of Force | 46 | 50 | -4 | -8% | 71 | -25 | -35% | 451 | 442 | 9 | 2% |
| Planned | 1 | 0 | 1 | 0% | 5 | -4 | -80% | 15 | 19 | -4 | -21% |
| Unplanned | 45 | 50 | -5 | -10% | 66 | -21 | -32% | 436 | 423 | 13 | 3% |
| Chemical | 36 | 42 | -6 | -14% | 52 | -16 | -31% | 368 | 332 | 36 | 11% |
| Restraint Chair (Security) | 0 | 0 | 0 | 0% | 1 | -1 | -100% | 0 | 1 | -1 | -100% |
| 4 Point Bed Restraints (Medical) | 0 | 0 | 0 | 0% | 0 | 0 | 0% | 0 | 0 | 0 | 0% |
| Stunn-Cuff | 0 | 0 | 0 | 0% | 0 | 0 | 0% | 0 | 0 | 0 | 0% |
| Fire Drills | 10 | 9 | 1 | 11% | 9 | 1 | 11% | 95 | 94 | 1 | 1% |
| Fire Drill Deficiencies | 0 | 0 | 0 | 0% | 0 | 0 | 0% | 11 | 11 | 0 | 0% |
| Medical Drill | 3 | 3 | 0 | 0% | 3 | 0 | 0% | 27 | 27 | 0 | 0% |
| Medical Drill Deficiencies | 0 | 0 | 0 | 0% | 0 | 0 | 0% | 0 | 0 | 0 | 0% |
| Deaths | 0 | 1 | -1 | -100% | 0 | 0 | 0% | 5 | 2 | 3 | 150% |

Green: decrease Red: increase

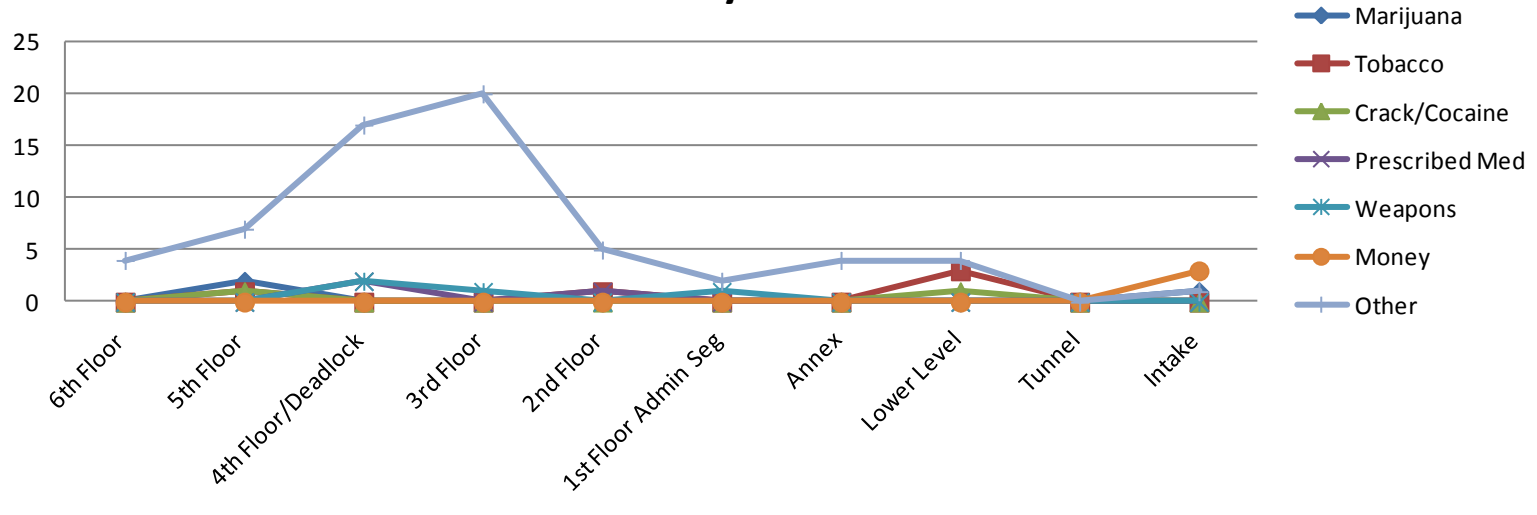
Jail Contraband Report

September-17

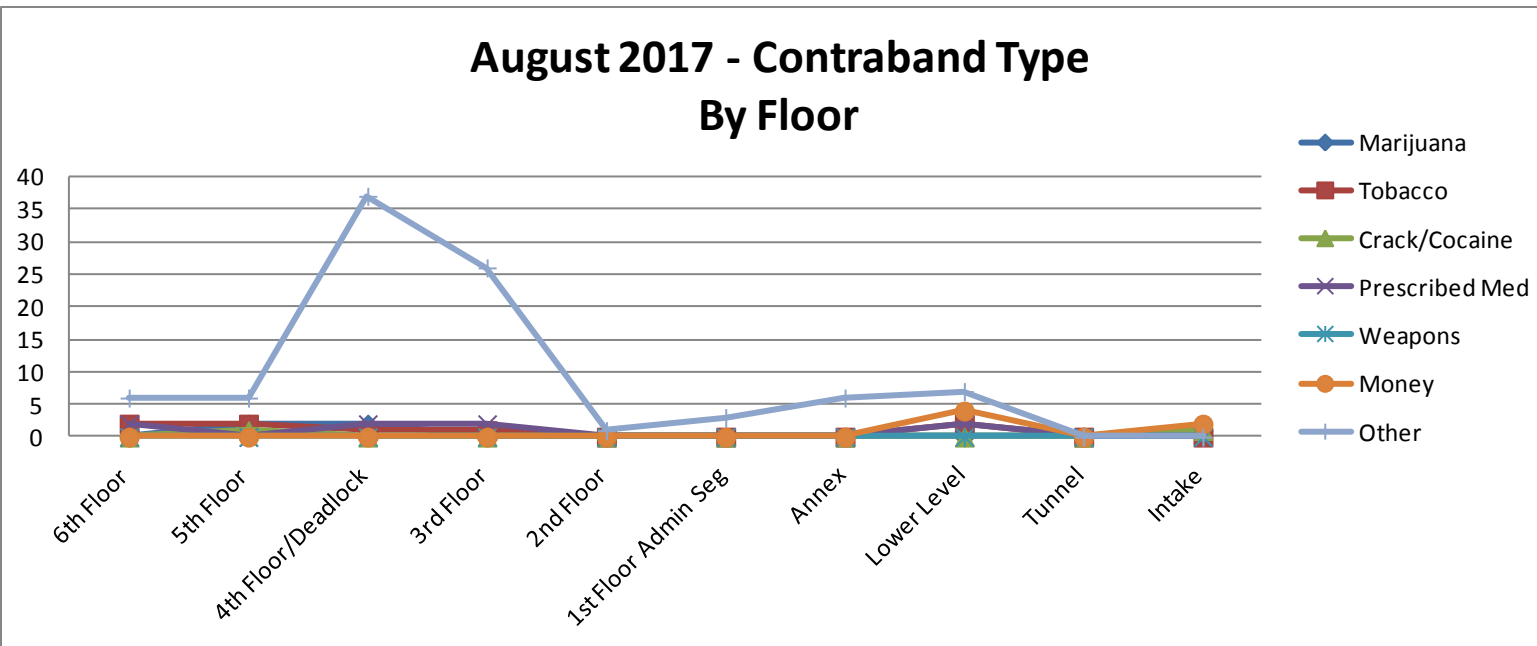
| Jail Contraband | This Month to Last Month | | | | Same Month Last Year | | | Year to Date (Last Year/This Year) | | | |
|----------------------------|--------------------------|--------|-------|--------|----------------------|-------|--------|------------------------------------|------|-------|--------|
| | Sep-17 | Aug-17 | (+/-) | % Chng | Sep-16 | (+/-) | % Chng | 2017 | 2016 | (+/-) | % Chng |
| 201 Poplar | 84 | 121 | -37 | -31% | 72 | 12 | 17% | 852 | 545 | 307 | 56% |
| Tobacco | 5 | 8 | -3 | -38% | 9 | -4 | -44% | 34 | 50 | -16 | -32% |
| Marijuana | 3 | 5 | -2 | -40% | 5 | -2 | -40% | 37 | 43 | -6 | -14% |
| Crack/Cocaine/Heroin | 2 | 2 | 0 | 0% | 1 | 1 | 100% | 17 | 5 | 12 | 240% |
| Prescribed Meds | 3 | 8 | -5 | -63% | 10 | -7 | -70% | 54 | 40 | 14 | 35% |
| Weapons | 4 | 0 | 4 | 0% | 3 | 1 | 33% | 24 | 15 | 9 | 60% |
| Money | 3 | 6 | -3 | -50% | 4 | -1 | -25% | 28 | 27 | 1 | 4% |
| Other | 64 | 92 | -28 | -30% | 40 | 24 | 60% | 658 | 365 | 293 | 80% |
| Contraband by Shift | 84 | 121 | -37 | -31% | 72 | 12 | 17% | 852 | 545 | 307 | 56% |
| 6 - 2 Shift | 41 | 58 | -17 | -29% | 34 | 7 | 21% | 390 | 194 | 196 | 101% |
| 2-10 Shift | 41 | 61 | -20 | -33% | 37 | 4 | 11% | 432 | 300 | 132 | 44% |
| 10 - 6 Shift | 2 | 2 | 0 | 0% | 1 | 1 | 100% | 30 | 51 | -21 | -41% |
| Contraband by Floor | 84 | 121 | -37 | -31% | 72 | 12 | 17% | 852 | 545 | 307 | 56% |
| 6th Floor | 4 | 9 | -5 | -56% | 7 | -3 | -43% | 54 | 33 | 21 | 64% |
| 5th Floor | 11 | 12 | -1 | -8% | 8 | 3 | 38% | 69 | 32 | 37 | 116% |
| 4th Floor | 21 | 42 | -21 | -50% | 27 | -6 | -22% | 254 | 272 | -18 | -7% |
| 3rd Floor | 21 | 30 | -9 | -30% | 8 | 13 | 163% | 234 | 50 | 184 | 368% |
| 2nd Floor | 7 | 1 | 6 | 600% | 9 | -2 | -22% | 52 | 28 | 24 | 86% |
| 1st Floor Admin Seg | 3 | 3 | 0 | 0% | 2 | 1 | 50% | 37 | 24 | 13 | 54% |
| Lower Level | 8 | 14 | -6 | -43% | 6 | 2 | 33% | 46 | 46 | 0 | 0% |
| Tunnel | 0 | 0 | 0 | 0% | 0 | 0 | 0% | 1 | 4 | -3 | -75% |
| Annex | 4 | 6 | -2 | -33% | 3 | 1 | 33% | 62 | 14 | 48 | 343% |
| Intake | 5 | 4 | 1 | 25% | 2 | 3 | 150% | 43 | 42 | 1 | 2% |

Green: decrease Red: increase

September 2017 - Contraband Type By Floor



August 2017 - Contraband Type By Floor



Total Contraband by Shift Fiscal 2017/2018

■ 6 - 2 SHIFT
 ■ 2 - 10 SHIFT
 ■ 10 - 6 SHIFT



| | Jul | Aug | Sep | Oct | Nov | Dec | Jan | Feb | Mar | Apr | May | Jun |
|---|-----|-----|-----|-----|-----|-----|-----|-----|-----|-----|-----|-----|
| ■ 6 - 2 SHIFT | 57 | 58 | 41 | | | | | | | | | |
| ■ 2 - 10 SHIFT | 62 | 61 | 41 | | | | | | | | | |
| ■ 10 - 6 SHIFT | 4 | 2 | 2 | | | | | | | | | |

Jail Offenses - 201 Poplar

September-17

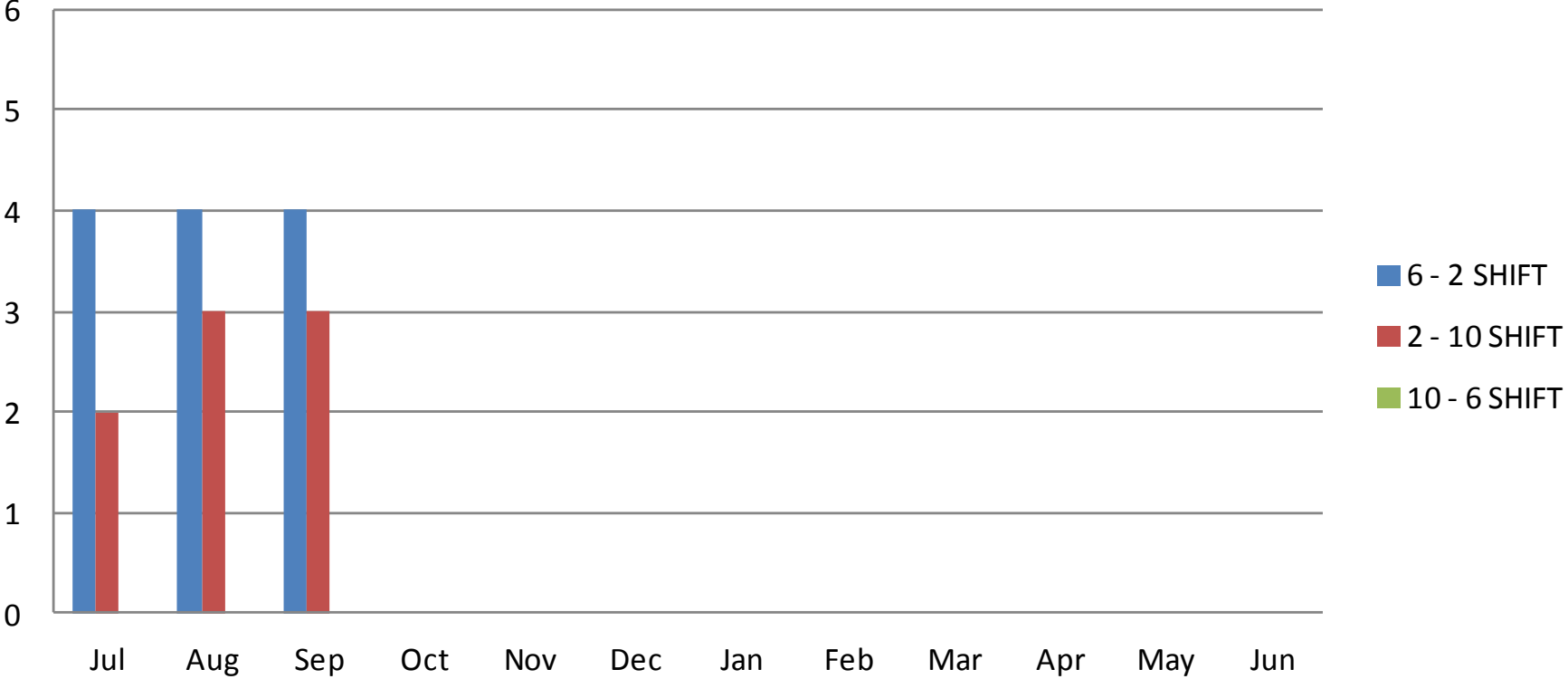
| 201 Poplar | This Month to Last Month | | | | Same Month Last Year | | | Year to Date (Last Year/This Year) | | | |
|---------------------------------------|--------------------------|--------|-------|--------|----------------------|-------|--------|------------------------------------|-------|-------|--------|
| | Sep-17 | Aug-17 | (+/-) | % Chng | Sep-16 | (+/-) | % Chng | 2017 | 2016 | (+/-) | % Chng |
| Total Offenses | 340 | 293 | 47 | 16% | 1344 | -1004 | -75% | 2539 | 12520 | -9981 | -80% |
| Assaultive | 72 | 54 | 18 | 33% | 87 | -15 | -17% | 555 | 633 | -78 | -12% |
| Alleged Rapes | 0 | 1 | -1 | -100% | 0 | 0 | 0% | 2 | 1 | 1 | 100% |
| Assault to Staff | 7 | 7 | 0 | 0% | 14 | -7 | -50% | 62 | 57 | 5 | 9% |
| Inciting Riot | 0 | 0 | 0 | 0% | 0 | 0 | 0% | 0 | 0 | 0 | 0% |
| Inmate Assault | 45 | 31 | 14 | 45% | 40 | 5 | 13% | 330 | 319 | 11 | 3% |
| Set Fire/Arson | 1 | 0 | 1 | 0% | 0 | 1 | 0% | 2 | 2 | 0 | 0% |
| Sexual Battery to Inmate | 1 | 3 | -2 | -67% | 4 | -3 | -75% | 18 | 55 | -37 | -67% |
| Sexual Battery to Staff | 0 | 0 | 0 | 0% | 0 | 0 | 0% | 1 | 2 | -1 | -50% |
| Spit/Urine/Feces at Inmate | 3 | 0 | 3 | 0% | 1 | 2 | 200% | 15 | 30 | -15 | -50% |
| Spit/Urine/Feces at Staff | 2 | 2 | 0 | 0% | 2 | 0 | 0% | 16 | 27 | -11 | -41% |
| Sexual Harassment | 11 | 9 | 2 | 22% | 24 | -13 | -54% | 98 | 132 | -34 | -26% |
| Voyeurism | 2 | 1 | 1 | 100% | 2 | 0 | 0% | 11 | 16 | -5 | -31% |
| Non- Assaultive*** | 251 | 227 | 24 | 11% | 900 | -649 | -72% | 1730 | 8251 | -6521 | -79% |
| Disrespect to Staff | 43 | 40 | 3 | 8% | 166 | -123 | -74% | 440 | 1519 | -1079 | -71% |
| Inmates Altercation Verbal | 6 | 15 | -9 | -60% | 26 | -20 | -77% | 56 | 255 | -199 | -78% |
| Liquid/Solid at Inmate | 1 | 1 | 0 | 0% | 4 | -3 | -75% | 13 | 19 | -6 | -32% |
| Liquid/Solid at Staff | 3 | 2 | 1 | 50% | 2 | 1 | 50% | 22 | 16 | 6 | 38% |
| Obscene Actions | 7 | 3 | 4 | 133% | 37 | -30 | -81% | 62 | 330 | -268 | -81% |
| Refuse Staff Order | 152 | 152 | 0 | 0% | 524 | -372 | -71% | 1014 | 4773 | -3759 | -79% |
| Threaten Inmate by Inmate | 1 | 1 | 0 | 0% | 4 | -3 | -75% | 8 | 36 | -28 | -78% |
| Threaten Staff by Inmate | 11 | 13 | -2 | -15% | 24 | -13 | -54% | 87 | 250 | -163 | -65% |
| Contraband | 16 | 10 | 6 | 60% | 43 | -27 | -63% | 79 | 474 | -395 | -83% |
| Found Contraband | 0 | 9 | -9 | -100% | 3 | -3 | -100% | 28 | 53 | -25 | -47% |
| Gang/STG Contraband | 0 | 1 | -1 | -100% | 0 | 0 | 0% | 2 | 2 | 0 | 0% |
| Possession of Contraband* | 16 | | 16 | 0% | 40 | -24 | -60% | 49 | 419 | -370 | -88% |
| Other*** | 0 | 1 | -1 | -100% | 269 | -269 | -100% | 136 | 2904 | -2768 | -95% |
| Suicidal Behaviors | 1 | 1 | 0 | 0% | 45 | -44 | -98% | 37 | 256 | -219 | -86% |
| Suicidal/Mutilative Actions | 0 | 0 | 0 | 0% | 11 | -11 | -100% | 8 | 45 | -37 | -82% |
| Suicidal/Mutilative Major Injury | 0 | 0 | 0 | 0% | 5 | -5 | -100% | 2 | 6 | -4 | -67% |
| Suicidal/Mutilative Minor Injury | 0 | 0 | 0 | 0% | 6 | -6 | -100% | 3 | 19 | -16 | -84% |
| Verbal, Written, or Observed Behavior | 1 | 1 | 0 | 0% | 23 | -22 | -96% | 24 | 186 | -162 | -87% |
| Deaths | 0 | 1 | -1 | -100% | 0 | 0 | 0% | 5 | 2 | 3 | 150% |

Green: decrease Red: increase

*Poss of Contraband includes poss of currency, hide prescribed meds, poss weapon, & poss alcohol/drugs

***Destruction of Property, Vulgar Language, and some other incidents not itemized on report card in previous months but included in total, have moved from Non Assaultive to Other .

2017/2018 Fiscal Year Assault to Staff - By Shift



P.R.E.A. Report

| Month 2017 | 201 Poplar | | | | | | Jail East | | | | | | Juvenile Court | | | | | |
|--------------|--------------------------|-------------------------|-------------------|-----------|--------------|------|--------------------------|-------------------------|-------------------|-----------|--------------|------|--------------------------|-------------------------|-------------------|-----------|--------------|------|
| | Sexual Battery to Inmate | Sexual Battery to Staff | Sexual Harassment | Voyeurism | Alleged Rape | Rape | Sexual Battery to Inmate | Sexual Battery to Staff | Sexual Harassment | Voyeurism | Alleged Rape | Rape | Sexual Battery to Inmate | Sexual Battery to Staff | Sexual Harassment | Voyeurism | Alleged Rape | Rape |
| Jan | 2 | 0 | 9 | 0 | 0 | 0 | 4 | 0 | 1 | 0 | 0 | 0 | 0 | 0 | 0 | 0 | 0 | 0 |
| Feb | 1 | 1 | 11 | 1 | 0 | 0 | 1 | 0 | 3 | 0 | 0 | 0 | 0 | 0 | 0 | 0 | 0 | 0 |
| Mar | 2 | 0 | 13 | 0 | 0 | 0 | 1 | 0 | 0 | 0 | 0 | 0 | 0 | 0 | 0 | 0 | 0 | 0 |
| Apr | 4 | 0 | 14 | 3 | 0 | 0 | 0 | 0 | 1 | 0 | 0 | 0 | 0 | 0 | 0 | 0 | 0 | 0 |
| May | 2 | 0 | 13 | 1 | 0 | 0 | 3 | 0 | 3 | 0 | 1 | 0 | 0 | 0 | 0 | 0 | 0 | 0 |
| Jun | 1 | 0 | 12 | 1 | 0 | 0 | 0 | 0 | 3 | 2 | 0 | 0 | 0 | 0 | 0 | 0 | 0 | 0 |
| Jul | 2 | 0 | 6 | 2 | 1 | 0 | 0 | 0 | 0 | 0 | 0 | 0 | 0 | 0 | 0 | 0 | 0 | 0 |
| Aug | 3 | 0 | 9 | 1 | 1 | 0 | 2 | 0 | 0 | 0 | 0 | 0 | 0 | 0 | 0 | 0 | 0 | 0 |
| Sep | 1 | 0 | 11 | 2 | 0 | 0 | 0 | 0 | 1 | 0 | 0 | 0 | 0 | 0 | 0 | 0 | 0 | 0 |
| Oct | | | | | | | | | | | | | | | | | | |
| Nov | | | | | | | | | | | | | | | | | | |
| Dec | | | | | | | | | | | | | | | | | | |
| Total | 18 | 1 | 98 | 11 | 2 | 0 | 11 | 0 | 12 | 2 | 1 | 0 | 0 | 0 | 0 | 0 | 0 | 0 |

All charge adjustments or criminal charges for these incidents will be addressed by the GIB office.

Jail Administrative Support Report September-17

| Jail Admin Support | This Month to Last Month | | | | Same Month Last Year | | | Year to Date (Last Year/This Year) | | | |
|--|--------------------------|--------|-------|--------|----------------------|-------|--------|------------------------------------|-------|-------|--------|
| | Sep-17 | Aug-17 | (+/-) | % Chng | Sep-16 | (+/-) | % Chng | 2017 | 2016 | (+/-) | % Chng |
| Daily Avg Employees on Sick Leave | 52 | 64 | -12 | -19% | 61 | -9 | -15% | 59 | 67 | -8 | -12% |
| Daily Avg Regular Sick Leave | 17 | 22 | -5 | -23% | 25 | -8 | -32% | 23 | 29 | -6 | -22% |
| Security Staff | 15 | 19 | -4 | -21% | 22 | -7 | -32% | 19 | 25 | -6 | -24% |
| Support Staff | 2 | 3 | -1 | -33% | 3 | -1 | -33% | 3 | 4 | 0 | -6% |
| Daily Avg Extended Sick Leave | 35 | 42 | -7 | -17% | 36 | -1 | -3% | 36 | 38 | -2 | -5% |
| Extended Sick Leave | 9 | 9 | 0 | 0% | 11 | -2 | -18% | 11 | 9 | 2 | 28% |
| FMLA | 23 | 30 | -7 | -23% | 22 | 1 | 5% | 23 | 26 | -3 | -13% |
| OJI | 3 | 3 | 0 | 0% | 3 | 0 | 0% | 2 | 3 | -1 | -29% |
| Maternity | 0 | 0 | 0 | 0% | 0 | 0 | 0% | 0 | 0 | 0 | 0% |
| Disability | 0 | 0 | 0 | 0% | 0 | 0 | 0% | 0 | 0 | 0 | -100% |
| Total Over Time (Hours) | 21755 | 16310 | 5445 | 33% | 8973 | 12782 | 142% | 102743 | 56260 | 46483 | 83% |
| Total Drug Tests | 49 | 58 | -9 | -16% | 53 | -4 | -8% | 463 | 517 | -54 | -10% |
| Pass | 49 | 58 | -9 | -16% | 53 | -4 | -8% | 463 | 516 | -53 | -10% |
| Fail/Resign | 0 | 0 | 0 | 0% | 0 | 0 | 0% | 0 | 1 | -1 | -100% |

Jail Disciplinary Report September-17

| Jail Disciplinary | This Month to Last Month | | | | Same Month Last Year | | | Year to Date (Last Year/This Year) | | | |
|---|--------------------------|--------|-------|--------|----------------------|-------|--------|------------------------------------|------|-------|--------|
| | Sep-17 | Aug-17 | (+/-) | % Chng | Sep-16 | (+/-) | % Chng | 2017 | 2016 | (+/-) | % Chng |
| Total Cases Reviewed | 60 | 55 | 5 | 9% | 36 | 24 | 67% | 385 | 285 | 100 | 35% |
| Total Dismissed Cases | 2 | 0 | 2 | 0% | 4 | -2 | -50% | 23 | 27 | -4 | -15% |
| AWOL Disciplinary | 20 | 10 | 10 | 100% | 25 | -5 | -20% | 165 | 138 | 27 | 20% |
| Progressive Disciplinary Infractions | 60 | 28 | 32 | 114% | 21 | 39 | 186% | 332 | 282 | 50 | 18% |
| 6 - 2 Shift | 29 | 15 | 14 | 93% | 3 | 26 | 867% | 157 | 77 | 80 | 104% |
| 2 - 10 Shift | 21 | 4 | 17 | 425% | 15 | 6 | 40% | 90 | 102 | -12 | -12% |
| 10 - 6 Shift | 6 | 4 | 2 | 50% | 0 | 6 | 0% | 44 | 38 | 6 | 16% |
| Jail East | 4 | 5 | -1 | -20% | 3 | 1 | 33% | 41 | 65 | -24 | -37% |
| Discussion and Counseling | 7 | 10 | -3 | -30% | 4 | 3 | 75% | 32 | 46 | -14 | -30% |
| 6 - 2 Shift | 6 | 5 | 1 | 20% | 2 | 4 | 200% | 20 | 23 | -3 | -13% |
| 2 - 10 Shift | 1 | 5 | -4 | -80% | 2 | -1 | -50% | 7 | 14 | -7 | -50% |
| 10 - 6 Shift | 0 | 0 | 0 | 0% | 0 | 0 | 0% | 4 | 3 | 1 | 33% |
| Jail East | 0 | 0 | 0 | 0% | 0 | 0 | 0% | 1 | 6 | -5 | -83% |
| Employee's Disciplined | 83 | 38 | 45 | 118% | 24 | 59 | 246% | 379 | 256 | 123 | 48% |
| Disciplinary Violation Infractions | 124 | 54 | 70 | 130% | 39 | 85 | 218% | 558 | 437 | 121 | 28% |
| Force | 1 | 0 | 1 | 0% | 0 | 1 | 0% | 8 | 5 | 3 | 60% |
| Attendance | 53 | 24 | 29 | 121% | 19 | 34 | 179% | 229 | 136 | 93 | 68% |
| Conduct | 30 | 12 | 18 | 150% | 16 | 14 | 88% | 134 | 160 | -26 | -16% |
| Performance | 40 | 18 | 22 | 122% | 4 | 36 | 900% | 187 | 136 | 51 | 38% |

Green: decrease Red: increase

* AWOL - Absence With Out Leave

Jail Medical Report - 201 Poplar

September-17

| Jail Medical Stats - 201 | This Month to Last Month | | | | Same Month Last Year | | | Year to Date (Last Year/This Year) | | | |
|--|--------------------------|--------|-------|--------|----------------------|-------|--------|------------------------------------|-------|-------|--------|
| | Sep-17 | Aug-17 | (+/-) | % Chng | Sep-16 | (+/-) | % Chng | 2017 | 2016 | (+/-) | % Chng |
| *Health Assessments | 487 | 500 | -13 | -3% | 599 | -112 | -19% | 4466 | 4908 | -442 | -9% |
| *Health Assessment Completion Ratio | 90% | 93% | -3% | -3% | 99% | -9% | -9% | 84% | 99% | -15% | -15% |
| On-Site Emergency Responses | 122 | 125 | -3 | -2% | 166 | -44 | -27% | 1145 | 1815 | -670 | -37% |
| Total Sick-Call Completion Ratio | 0% | 0% | 0% | 0% | 89% | -89% | -100% | 20% | 92% | -72% | -78% |
| Total Sick-Call | 2480 | 2801 | -321 | -11% | 2638 | -158 | -6% | 21930 | 22973 | -1043 | -5% |
| Nurse Sick-Call | 2133 | 2117 | 16 | 1% | 1937 | 196 | 10% | 16943 | 16404 | 539 | 3% |
| Mental Health Sick-Call | 298 | 318 | -20 | -6% | 271 | 27 | 10% | 2364 | 2757 | -393 | -14% |
| Dental Sick-Call | 49 | 366 | -317 | -87% | 430 | -381 | -89% | 2623 | 3812 | -1189 | -31% |
| Total Provider Visits | 1338 | 1460 | -122 | -8% | 1541 | -203 | -13% | 11579 | 12256 | -677 | -6% |
| Medical Provider Patient Visits | 750 | 913 | -163 | -18% | 845 | -95 | -11% | 6873 | 6695 | 178 | 3% |
| Mental Health Provider Patient Visits | 588 | 547 | 41 | 7% | 696 | -108 | -16% | 4706 | 5561 | -855 | -15% |
| Number of PPDs Given | 811 | 848 | -37 | -4% | 655 | 156 | 24% | 6691 | 5936 | 755 | 13% |
| Number of PPDs Read | 732 | 583 | 149 | 26% | 612 | 120 | 20% | 5367 | 5339 | 28 | 1% |
| Number of Positive PPDs | 3 | 0 | 3 | 0% | 3 | 0 | 0% | 29 | 65 | -36 | -55% |
| Total Off-Site Visits | 147 | 179 | -32 | -18% | 151 | -4 | -3% | 1167 | 1213 | -46 | -4% |
| ER Visits | 27 | 34 | -7 | -21% | 42 | -15 | -36% | 333 | 333 | 0 | 0% |
| Offsite Mental Health Visits | 0 | 0 | 0 | 0% | 0 | 0 | 0% | 0 | 0 | 0 | 0% |
| Specialty Clinic Visits | 120 | 145 | -25 | -17% | 109 | 11 | 10% | 834 | 880 | -46 | -5% |
| 521 HIV Testing | 18 | 21 | -3 | -14% | 14 | 4 | 29% | 92 | 115 | -23 | -20% |
| **MRSA | 0 | 1 | -1 | -100% | 1 | -1 | -100% | 6 | 9 | -3 | -33% |
| Less than 30 days | 0 | 1 | -1 | -100% | 1 | -1 | -100% | 6 | 6 | 0 | 0% |
| Greater than 30 days | 0 | 0 | 0 | 0% | 0 | 0 | 0% | 0 | 3 | -3 | -100% |
| MRSA Requiring Isolation | 0 | 1 | -1 | -100% | 0 | 0 | 0% | 3 | 3 | 0 | 0% |
| Total Wounds Cultured | 3 | 1 | 2 | 200% | 1 | 2 | 200% | 10 | 13 | -3 | -23% |
| Total Positive Wound Cultures | 0 | 1 | -1 | -100% | 1 | -1 | -100% | 6 | 7 | -1 | -14% |

Green: decrease Red: increase

* Note: The September 2017 "Health Assessments" and "Health Assessment Completion Ratio" are calculated from August 21st, 2016 book dates through September 20th, 2017 book dates.

** Note: All cases of suspected MRSA are treated, regardless of confirmed diagnosis by culture. These numbers contain both confirmed and suspected cases of MRSA.

Jail Maintenance Report

September-17

| Jail Maintenance Stats | This Month to Last Month | | | | Same Month Last Year | | | Year to Date (Last Year/This Year) | | | |
|-------------------------------------|--------------------------|--------|-------|--------|----------------------|-------|--------|------------------------------------|-------|-------|--------|
| | Sep-17 | Aug-17 | (+/-) | % Chng | Sep-16 | (+/-) | % Chng | 2017 | 2016 | (+/-) | % Chng |
| Work Orders Submitted | 684 | 932 | -248 | -27% | 1217 | -533 | -44% | 6299 | 11256 | -4957 | -44% |
| Completed Work Orders | 679 | 920 | -241 | -26% | 1212 | -533 | -44% | 6238 | 11209 | -4971 | -44% |
| Pending | 5 | 12 | -7 | -58% | 5 | 0 | 0% | 61 | 47 | 14 | 30% |
| Repeat Work Orders | 0 | 0 | 0 | 0% | 0 | 0 | 0% | 0 | 0 | 0 | 0% |
| Duplicate Work Orders | 0 | 0 | 0 | 0% | 0 | 0 | 0% | 0 | 1 | -1 | -100% |
| PM Action / Inspection | 236 | 188 | 48 | 26% | 236 | 0 | 0% | 2015 | 1834 | 181 | 10% |
| No Problem Found | 9 | 8 | 1 | 13% | 4 | 5 | 125% | 54 | 62 | -8 | -13% |
| Not Respond by Following Day | 0 | 0 | 0 | 0% | 0 | 0 | 0% | 0 | 0 | 0 | 0% |

Green: decrease Red: increase

*Repeat work orders are the orders that are worked on again

*Duplicate work orders are tickets that were submitted more than once - no more work done

Environmental Report

September-17

| Environmental Stats | This Month to Last Month | | | | Same Month Last Year | | | Year to Date (Last Year/This Year) | | | |
|--|--------------------------|--------|-------|--------|----------------------|-------|--------|------------------------------------|------|-------|--------|
| | Sep-17 | Aug-17 | (+/-) | % Chng | Sep-16 | (+/-) | % Chng | 2017 | 2016 | (+/-) | % Chng |
| Kitchen Inspections | 28 | 38 | -10 | -26% | 30 | -2 | -7% | 292 | 282 | 10 | 4% |
| 6-2 Shift | 14 | 19 | -5 | -26% | 15 | -1 | -7% | 146 | 141 | 5 | 4% |
| 10-6 Shift | 14 | 19 | -5 | -26% | 15 | -1 | -7% | 146 | 141 | 5 | 4% |
| Kitchen Inspection Deficiencies | 85 | 96 | -11 | -11% | 70 | 15 | 21% | 731 | 640 | 91 | 14% |
| Kitchen Reinspection Deficiencies | 71 | 80 | -9 | -11% | 57 | 14 | 25% | 543 | 487 | 56 | 11% |
| Floor Inspections - Deficiencies | 145 | 161 | -16 | -10% | 167 | -22 | -13% | 1438 | 1266 | 172 | 14% |
| 6th Floor | 6 | 4 | 2 | 50% | 4 | 2 | 50% | 35 | 31 | 4 | 13% |
| 5th Floor | 5 | 6 | -1 | -17% | 8 | -3 | -38% | 45 | 47 | -2 | -4% |
| 4th Floor | 45 | 41 | 4 | 10% | 46 | -1 | -2% | 412 | 363 | 49 | 13% |
| 3rd Floor | 25 | 33 | -8 | -24% | 29 | -4 | -14% | 284 | 231 | 53 | 23% |
| 2nd Floor | 15 | 20 | -5 | -25% | 33 | -18 | -55% | 188 | 207 | -19 | -9% |
| Dialysis | 0 | 0 | 0 | 0% | 0 | 0 | 0% | 0 | 0 | 0 | 0% |
| 1st Floor Admin. Seg. | 21 | 19 | 2 | 11% | 15 | 6 | 40% | 169 | 149 | 20 | 13% |
| Intake & Release | 4 | 4 | 0 | 0% | 2 | 2 | 100% | 32 | 20 | 12 | 60% |
| Lower Level South | 13 | 17 | -4 | -24% | 25 | -12 | -48% | 158 | 176 | -18 | -10% |
| Lower Level North | 3 | 9 | -6 | -67% | 3 | 0 | 0% | 31 | 3 | 28 | 933% |
| Annex | 3 | 5 | -2 | -40% | 2 | 1 | 50% | 64 | 33 | 31 | 94% |
| Jail East | 5 | 3 | 2 | 67% | 0 | 5 | 0% | 20 | 6 | 14 | 233% |
| Repeat Deficiencies | 77 | 86 | -9 | -10% | 88 | -11 | -13% | 710 | 631 | 79 | 13% |
| 6th Floor | 2 | 3 | -1 | -33% | 1 | 1 | 100% | 12 | 8 | 4 | 50% |
| 5th Floor | 3 | 2 | 1 | 50% | 3 | 0 | 0% | 18 | 15 | 3 | 20% |
| 4th Floor | 25 | 24 | 1 | 4% | 25 | 0 | 0% | 208 | 200 | 8 | 4% |
| 3rd Floor | 10 | 13 | -3 | -23% | 14 | -4 | -29% | 117 | 89 | 28 | 31% |
| 2nd Floor | 6 | 9 | -3 | -33% | 15 | -9 | -60% | 84 | 94 | -10 | -11% |
| Dialysis | 0 | 0 | 0 | 0% | 0 | 0 | 0% | 0 | 12 | -12 | -100% |
| 1st Floor Admin. Seg. | 19 | 16 | 3 | 19% | 11 | 8 | 73% | 126 | 84 | 42 | 50% |
| Intake & Release | 1 | 1 | 0 | 0% | 1 | 0 | 0% | 9 | 8 | 1 | 13% |
| Lower Level South | 6 | 11 | -5 | -45% | 16 | -10 | -63% | 88 | 107 | -19 | -18% |
| Lower Level North | 2 | 4 | -2 | -50% | 2 | 0 | 0% | 14 | 2 | 12 | 600% |
| Annex | 1 | 1 | 0 | 0% | 0 | 1 | 0% | 25 | 8 | 17 | 213% |
| Jail East | 2 | 2 | 0 | 0% | 0 | 2 | 0% | 9 | 4 | 5 | 125% |

Green: decrease Red: increase

Jail Operations Report

September-17

| Jail Training Stats | This Month to Last Month | | | | Same Month Last Year | | | Year to Date (Last Year/This Year) | | | |
|---------------------------------------|--------------------------|--------|-------|--------|----------------------|-------|--------|------------------------------------|------|-------|--------|
| | Sep-17 | Aug-17 | (+/-) | % Chng | Sep-16 | (+/-) | % Chng | 2017 | 2016 | (+/-) | % Chng |
| Total Number of Staffs Trained | 287 | 261 | 26 | 10% | 297 | -10 | -3% | 1679 | 2320 | -641 | -28% |
| Orientation | 44 | 22 | 22 | 100% | 24 | 20 | 83% | 206 | 140 | 66 | 47% |
| In Service | 127 | 104 | 23 | 22% | 92 | 35 | 38% | 805 | 900 | -95 | -11% |
| FTO/In House | 46 | 43 | 3 | 7% | 109 | -63 | -58% | 212 | 942 | -730 | -77% |
| Specialized Training | 32 | 18 | 14 | 78% | 31 | 1 | 3% | 134 | 89 | 45 | 51% |
| Conferences | 17 | 0 | 17 | 0% | 5 | 12 | 240% | 24 | 25 | -1 | -4% |
| Tours | 21 | 74 | -53 | -72% | 36 | -15 | -42% | 298 | 224 | 74 | 33% |

| Jail Food Services Stats | This Month to Last Month | | | | Same Month Last Year | | | Year to Date (Last Year/This Year) | | | |
|---------------------------|--------------------------|---------|-------|--------|----------------------|---------|--------|------------------------------------|-----------|---------|--------|
| | Sep-17 | Aug-17 | (+/-) | % Chng | Sep-16 | (+/-) | % Chng | 2017 | 2016 | (+/-) | % Chng |
| Total Meals Served | 275,178 | 269,417 | 5,761 | 2% | 289,624 | -14,446 | -5% | 2,471,587 | 2,506,080 | -34,493 | -1% |
| Inmates Meals | 210,451 | 206,811 | 3,640 | 2% | 232,239 | -21,788 | -9% | 1,918,730 | 1,992,234 | -73,504 | -4% |
| Employee Meals | 6,562 | 7,129 | -567 | -8% | 7,238 | -676 | -9% | 62,481 | 65,034 | -2,553 | -4% |
| Jail East Inmate Meals | 29,352 | 27,616 | 1,736 | 6% | 22,710 | 6,642 | 29% | 231,934 | 205,317 | 26,617 | 13% |
| Jail East Employee Meals | 3,900 | 4,030 | -130 | -3% | 4,500 | -600 | -13% | 36,321 | 41,310 | -4,989 | -12% |
| Sack Lunches | 13,293 | 12,976 | 317 | 2% | 13,618 | -325 | -2% | 120,446 | 109,712 | 10,734 | 10% |
| Juvenile Inmates | 7,656 | 7,007 | 649 | 9% | 5,404 | 2,252 | 42% | 69,054 | 53,667 | 15,387 | 29% |
| Juvenile Snacks | 2,819 | 2,703 | 116 | 4% | 1,822 | 997 | 55% | 23,007 | 18,074 | 4,933 | 27% |
| Juvenile Emp. | 1,145 | 1,145 | 0 | 0% | 2,093 | -948 | -45% | 9,614 | 20,732 | -11,118 | -54% |

| Jail Fiduciary Stats | This Month to Last Month | | | | Same Month Last Year | | | Year to Date (Last Year/This Year) | | | |
|-----------------------------------|--------------------------|---------|-------|--------|----------------------|-------|--------|------------------------------------|----------|--------|--------|
| | Sep-17 | Aug-17 | (+/-) | % Chng | Sep-16 | (+/-) | % Chng | 2017 | 2016 | (+/-) | % Chng |
| 201 Poplar Dress Out | 2090 | 2271 | -181 | -8% | 2551 | -461 | -18% | 20452 | 23802 | -3350 | -14% |
| Jail East Dress Out | 482 | 558 | -76 | -14% | 653 | -171 | -26% | 5063 | 5793 | -730 | -13% |
| Property Damage Charged | \$0 | \$4 | -4 | -100% | \$0 | 0 | 0% | \$10,687 | \$34 | 10653 | 31332% |
| Property Damage Collected | \$56 | \$189 | -133 | -70% | \$0 | 56 | 0% | \$3,364 | \$113 | 3251 | 2877% |
| Medical Activity Charged | \$1,853 | \$2,839 | -986 | -35% | \$4,096 | -2243 | -55% | \$25,643 | \$39,546 | -13903 | -35% |
| Medical Activity Collected | \$1,272 | \$1,694 | -422 | -25% | \$2,934 | -1662 | -57% | \$15,688 | \$27,684 | -11996 | -43% |

| Jail CIT | This Month to Last Month | | | | Same Month Last Year | | | Year to Date (Last Year/This Year) | | | |
|------------------|--------------------------|--------|-------|--------|----------------------|-------|--------|------------------------------------|------|-------|--------|
| | Sep-17 | Aug-17 | (+/-) | % Chng | Sep-16 | (+/-) | % Chng | 2017 | 2016 | (+/-) | % Chng |
| Callouts | 7 | 5 | 2 | 40% | 5 | 2 | 40% | 69 | 64 | 5 | 8% |
| 6 - 2 Shift | 3 | 1 | 2 | 200% | 5 | -2 | -40% | 55 | 57 | -2 | -4% |
| 2 - 10 Shift | 4 | 4 | 0 | 0% | 0 | 4 | 0% | 14 | 3 | 11 | 367% |
| 10 - 6 Shift | 0 | 0 | 0 | 0% | 0 | 0 | 0% | 0 | 4 | -4 | -100% |
| Referrals | 1 | 2 | -1 | -50% | 2 | -1 | -50% | 19 | 27 | -8 | -30% |
| 6 - 2 Shift | 1 | 0 | 1 | 0% | 2 | -1 | -50% | 16 | 24 | -8 | -33% |
| 2 - 10 Shift | 0 | 2 | -2 | -100% | 0 | 0 | 0% | 3 | 0 | 3 | 0% |
| 10 - 6 Shift | 0 | 0 | 0 | 0% | 0 | 0 | 0% | 0 | 3 | -3 | -100% |

Green: decrease Red: increase

Jail C.I.T. Report

| | 201 Poplar | | | | Jail East | | | |
|--------------|------------|-----------|-----|---------------|-----------|-----------|-----|---------------|
| Month 2017 | Callouts | Referrals | DRT | Mental Health | Callouts | Referrals | DRT | Mental Health |
| Jan | 16 | 3 | 3 | 0 | 1 | 0 | 0 | 0 |
| Feb | 7 | 1 | 1 | 0 | 0 | 0 | 0 | 0 |
| Mar | 6 | 2 | 1 | 1 | 1 | 0 | 0 | 0 |
| Apr | 3 | 0 | 0 | 0 | 0 | 0 | 0 | 0 |
| May | 4 | 1 | 1 | 0 | 1 | 0 | 0 | 0 |
| Jun | 9 | 4 | 4 | 0 | 0 | 0 | 0 | 0 |
| Jul | 9 | 5 | 4 | 1 | 0 | 0 | 0 | 0 |
| Aug | 14 | 1 | 2 | 0 | 0 | 0 | 0 | 0 |
| Sep | 7 | 1 | 1 | 0 | 0 | 0 | 0 | 0 |
| Oct | | | | | | | | |
| Nov | | | | | | | | |
| Dec | | | | | | | | |
| Total | 75 | 18 | 17 | 2 | 3 | 0 | 0 | 0 |

OVER-TIME - JAIL DIVISION

| FUND | JAIL DIVISIONS | 2018 August | 2018 Sept. | FY 18/Mon Budget | YTD FY 17 SPENDING | FY 18 YTD Spent | YTD Comparison |
|--------------|------------------|----------------|----------------|------------------|--------------------|------------------|-------------------|
| L3101 | JAIL ADMIN | 3,321 | 4,282 | 83 | 665 | 7,753 | -7,088 |
| L3201 | JAIL OPERATION | 617,580 | 507,520 | 79,719 | 700,572 | 1,745,057 | -1,044,485 |
| L3202 | JAIL EAST | 2,127 | 5,601 | 8,333 | 27,835 | 9,318 | 18,517 |
| L3203 | JAIL JUV. | 34,759 | 34,916 | 25,843 | 62,568 | 78,796 | -16,228 |
| L3301 | JAIL PROGRAMS | 8,772 | 11,935 | 0 | 295 | 20,706 | -20,411 |
| L3302 | JAIL MAINTENANCE | 3,714 | 3,761 | 3,167 | 10,329 | 7,664 | 2,665 |
| TOTAL | | 670,273 | 568,015 | 117,145 | 802,264 | 1,869,294 | -1,067,030 |

O & M - JAIL DIVISION

| TOTAL BUDGET | YTD ACTIVITY | BALANCE | %USED | %BAL |
|-----------------|--------------|-------------|-------|------|
| \$10,221,230 | \$1,344,088 | \$8,877,142 | 13% | 87% |
| TOTAL OBLIGATED | \$4,222,372 | \$5,998,858 | 41% | 59% |

TOTAL BUDGET - JAIL DIVISION

| TOTAL BUDGET | YTD ACTIVITY | BALANCE | %USED | %BAL |
|--------------|--------------|--------------|-------|------|
| \$86,906,937 | \$18,028,356 | \$68,878,581 | 21% | 79% |

Jail Classifications Report

September-17

| Male Jail Classifications Stats | This Month to Last Month | | | | Same Month Last Year | | | Year to Date (Last Year/This Year) | | | |
|--|--------------------------|--------|-------|--------|----------------------|-------|--------|------------------------------------|-------|-------|--------|
| | Sep-17 | Aug-17 | (+/-) | % Chng | Sep-16 | (+/-) | % Chng | 2017 | 2016 | (+/-) | % Chng |
| Total Primary Classifications | 4054 | 3620 | 434 | 12% | 3454 | 600 | 17% | 33557 | 32048 | 1509 | 5% |
| Primary Classification 201 Poplar | 2944 | 2564 | 380 | 15% | 2670 | 274 | 10% | 24882 | 24438 | 444 | 2% |
| Maximum Security Level | 773 | 306 | 467 | 153% | 146 | 627 | 429% | 3726 | 1136 | 2590 | 228% |
| 9-High | 224 | 125 | 99 | 79% | 6 | 218 | 3633% | 1007 | 42 | 965 | 2298% |
| 8-Close | 549 | 181 | 368 | 203% | 140 | 409 | 292% | 2719 | 1094 | 1625 | 149% |
| Medium Security Level | 1185 | 1224 | -39 | -3% | 1556 | -371 | -24% | 14563 | 14164 | 399 | 3% |
| 7-Medium High | 315 | 327 | -12 | -4% | 891 | -576 | -65% | 7325 | 8076 | -751 | -9% |
| 6-Medium | 434 | 450 | -16 | -4% | 381 | 53 | 14% | 3393 | 3459 | -66 | -2% |
| 5-Low Medium | 436 | 447 | -11 | -2% | 284 | 152 | 54% | 3845 | 2629 | 1216 | 46% |
| Minimum Security Level | 986 | 1034 | -48 | -5% | 968 | 18 | 2% | 9092 | 9138 | -46 | -1% |
| 4-Minimum Pre-Sentence | 986 | 1034 | -48 | -5% | 968 | 18 | 2% | 9088 | 9138 | -50 | -1% |
| 3-Minimum | 0 | 0 | 0 | 0% | 0 | 0 | 0% | 0 | 0 | 0 | 0% |
| 2-Low | 0 | 0 | 0 | 0% | 0 | 0 | 0% | 0 | 0 | 0 | 0% |
| 1-Very Low | 0 | 0 | 0 | 0% | 0 | 0 | 0% | 4 | 0 | 4 | 0% |
| Avg Male Inmates In PC | 6 | 6 | 0 | 0% | 6 | 0 | 0% | 6 | 6 | 0 | -4% |
| Female Jail Classifications Stats | This Month to Last Month | | | | Same Month Last Year | | | Year to Date (Last Year/This Year) | | | |
| | Sep-17 | Aug-17 | (+/-) | % Chng | Sep-16 | (+/-) | % Chng | 2017 | 2016 | (+/-) | % Chng |
| Primary Classification Jail East | 1110 | 1056 | 54 | 5% | 784 | 326 | 42% | 8675 | 7610 | 1065 | 14% |
| Maximum Security Level | 3 | 4 | -1 | -25% | 0 | 3 | 0% | 45 | 23 | 22 | 96% |
| 9-High | 0 | 1 | -1 | -100% | 0 | 0 | 0% | 7 | 0 | 7 | 0% |
| 8-Close | 3 | 3 | 0 | 0% | 0 | 3 | 0% | 38 | 23 | 15 | 65% |
| Medium Security Level | 587 | 590 | -3 | -1% | 371 | 216 | 58% | 4533 | 3384 | 1149 | 34% |
| 7-Medium High | 305 | 266 | 39 | 15% | 133 | 172 | 129% | 2201 | 1208 | 993 | 82% |
| 6-Medium | 91 | 105 | -14 | -13% | 108 | -17 | -16% | 950 | 1035 | -85 | -8% |
| 5-Low Medium | 191 | 219 | -28 | -13% | 130 | 61 | 47% | 1382 | 1141 | 241 | 21% |
| Minimum Security Level | 520 | 462 | 58 | 13% | 413 | 107 | 26% | 4420 | 4203 | 217 | 5% |
| 4-Minimum Pre-Sentence | 519 | 462 | 57 | 12% | 413 | 106 | 26% | 4419 | 4203 | 216 | 5% |
| 3-Minimum | 1 | 0 | 1 | 0% | 0 | 1 | 0% | 1 | 0 | 1 | 0% |
| 2-Low | 0 | 0 | 0 | 0% | 0 | 0 | 0% | 0 | 0 | 0 | 0% |
| 1-Very Low | 0 | 0 | 0 | 0% | 0 | 0 | 0% | 0 | 0 | 0 | 0% |
| Avg Female Inmates In PC | 0 | 0 | 0 | 0% | 0 | 0 | 0% | 0 | 0 | 0 | 0% |
| Total Classification Reviews | 307 | 102 | 205 | 201% | 951 | -644 | -68% | 929 | 6971 | -6042 | -87% |
| Overrides | 126 | 193 | -67 | -35% | 41 | 85 | 207% | 1187 | 379 | 808 | 213% |
| AVG Primary Classifications per Day | 107 | 106 | 1 | 1% | 115 | -8 | -7% | 85 | 117 | -32 | -27% |
| AVG Classification Reviews per Day | 10 | 3 | 7 | 233% | 32 | -22 | -69% | 18 | 26 | -8 | -32% |

Green: decrease Red: increase

Note: Total Primary Classifications will not equal to Total Bookings reported in Jail Population Report due to quick books. PC stands for Protective Custody.

Immigration, Custom and Enforcement

| Month/Year | Interviewed | | Referred to ICE | | Released to ICE | |
|--------------|--------------|--------------|-----------------|-----------|-----------------|----------|
| | Males | Females | Males | Females | Males | Females |
| September-16 | 2729 | 844 | 41 | 5 | 3 | 0 |
| October-16 | 2746 | 912 | 36 | 2 | 13 | 0 |
| November-16 | 2954 | 1125 | 49 | 6 | 0 | 0 |
| December-16 | 1720 | 769 | 39 | 5 | 5 | 0 |
| January-17 | 3849 | 1090 | 52 | 5 | 1 | 0 |
| February-17 | 3939 | 1479 | 45 | 9 | 13 | 1 |
| March-17 | 3465 | 1328 | 45 | 8 | 11 | 1 |
| April-17 | 3268 | 1739 | 72 | 12 | 24 | 0 |
| May-17 | 3386 | 1335 | 63 | 11 | 10 | 0 |
| June-17 | 2436 | 816 | 51 | 4 | 19 | 0 |
| July-17 | 2274 | 767 | 34 | 5 | 21 | 2 |
| August-17 | 2415 | 771 | 42 | 5 | 21 | 0 |
| September-17 | 2313 | 839 | 30 | 2 | 10 | 0 |
| TOTAL | 37494 | 13814 | 599 | 79 | 151 | 4 |

Transitional Towers - Programs Transcend

September-17



| Incidents | This Month to Last Month | | | | Same Month Last Year | | | Year to Date (Last Year/This Year) | | | |
|------------------|--------------------------|--------|-------|--------|----------------------|-------|--------|------------------------------------|------|-------|--------|
| | Sep-17 | Aug-17 | (+/-) | % Chng | Sep-16 | (+/-) | % Chng | 2017 | 2016 | (+/-) | % Chng |
| 6th Floor | 80 | 93 | -13 | -14% | 52 | 28 | 54% | 540 | 429 | 111 | 26% |
| Assaultive | 3 | 2 | 1 | 50% | 4 | -1 | -25% | 19 | 29 | -10 | -34% |
| Non- Assaultive | 77 | 89 | -12 | -13% | 44 | 33 | 75% | 511 | 374 | 137 | 37% |
| Contraband | 0 | 2 | -2 | -100% | 4 | -4 | -100% | 10 | 26 | -16 | -62% |
| 5th Floor | 87 | 80 | 7 | 9% | 45 | 42 | 93% | 612 | 391 | 221 | 57% |
| Assaultive | 1 | 3 | -2 | -67% | 2 | -1 | -50% | 17 | 20 | -3 | -15% |
| Non- Assaultive | 85 | 74 | 11 | 15% | 38 | 47 | 124% | 583 | 345 | 238 | 69% |
| Contraband | 1 | 3 | -2 | -67% | 5 | -4 | -80% | 12 | 26 | -14 | -54% |

| Programs | This Month to Last Month | | | | Same Month Last Year | | | Year to Date (Last Year/This Year) | | | |
|------------------------------|--------------------------|--------|-------|--------|----------------------|-------|--------|------------------------------------|-------|-------|--------|
| | Sep-17 | Aug-17 | (+/-) | % Chng | Sep-16 | (+/-) | % Chng | 2017 | 2016 | (+/-) | % Chng |
| Participants | 545 | 923 | -378 | -41% | 1629 | -1084 | -67% | 7450 | 14695 | -7245 | -49% |
| Alcohol & Drugs | 33 | 65 | -32 | -49% | 66 | -33 | -50% | 870 | 564 | 306 | 54% |
| Anger Management | 47 | 153 | -106 | -69% | 158 | -111 | -70% | 812 | 1380 | -568 | -41% |
| SCS | 19 | 41 | -22 | -54% | 6 | 13 | 217% | 121 | 12 | 109 | 908% |
| HIV | 0 | 0 | 0 | 0% | 0 | 0 | 0% | 0 | 0 | 0 | 0% |
| MRT | 0 | 0 | 0 | 0% | 0 | 0 | 0% | 0 | 0 | 0 | 0% |
| Real Talk | 286 | 453 | -167 | -37% | 612 | -326 | -53% | 4187 | 5435 | -1248 | -23% |
| Life Skill | 160 | 99 | 61 | 62% | 124 | 36 | 29% | 723 | 1086 | -363 | -33% |
| Pre GED | 0 | 0 | 0 | 0% | 0 | 0 | 0% | 0 | 0 | 0 | 0% |
| Restrictive Studies | 0 | 0 | 0 | 0% | 539 | -539 | -100% | 0 | 4926 | -4926 | -100% |
| Domestic Violence Awareness | 0 | 112 | -112 | -100% | 124 | -124 | -100% | 647 | 1292 | -645 | -50% |
| Thinking For Good | 0 | 0 | 0 | 0% | 0 | 0 | 0% | 0 | 0 | 0 | 0% |
| Gym/Recreation | 2900 | 3077 | -177 | -6% | 1923 | 977 | 51% | 20302 | 12632 | 7670 | 61% |
| Comprehensive PREA Education | 55 | 176 | -121 | -69% | 0 | 55 | 0% | 742 | 0 | 742 | 0% |
| Sessions | 19 | 32 | -13 | -41% | 48 | -29 | -60% | 233 | 404 | -171 | -42% |
| Alcohol & Drugs | 3 | 4 | -1 | -25% | 4 | -1 | -25% | 33 | 36 | -3 | -8% |
| Anger Management | 1 | 3 | -2 | -67% | 4 | -3 | -75% | 19 | 36 | -17 | -47% |
| SCS | 4 | 10 | -6 | -60% | 2 | 2 | 100% | 36 | 4 | 32 | 800% |
| HIV | 0 | 0 | 0 | 0% | 0 | 0 | 0% | 0 | 0 | 0 | 0% |
| MRT | 0 | 0 | 0 | 0% | 0 | 0 | 0% | 0 | 0 | 0 | 0% |
| Real Talk | 8 | 11 | -3 | -27% | 16 | -8 | -50% | 108 | 135 | -27 | -20% |
| Life Skill | 3 | 2 | 1 | 50% | 4 | -1 | -25% | 17 | 35 | -18 | -51% |
| Pre GED | 0 | 0 | 0 | 0% | 0 | 0 | 0% | 0 | 0 | 0 | 0% |
| Restrictive Studies | 0 | 0 | 0 | 0% | 14 | -14 | -100% | 0 | 122 | -122 | -100% |
| Domestic Violence Awareness | 0 | 2 | -2 | -100% | 4 | -4 | -100% | 16 | 36 | -20 | -56% |
| Thinking For Good | 0 | 0 | 0 | 0% | 0 | 0 | 0% | 0 | 0 | 0 | 0% |
| Gym/Recreation | 48 | 61 | -13 | -21% | 0 | 48 | 0% | 361 | 0 | 361 | 0% |
| Comprehensive PREA Education | 7 | 17 | -10 | -59% | 0 | 7 | 0% | 37 | 0 | 37 | 0% |

| Religious Services | This Month to Last Month | | | | Same Month Last Year | | | Year to Date (Last Year/This Year) | | | |
|---------------------------------------|--------------------------|--------|-------|--------|----------------------|-------|--------|------------------------------------|------|-------|--------|
| | Sep-17 | Aug-17 | (+/-) | % Chng | Sep-16 | (+/-) | % Chng | 2017 | 2016 | (+/-) | % Chng |
| Total Worship Participants | 235 | 412 | -177 | -43% | 498 | -263 | -53% | 3071 | 4218 | -1147 | -27% |
| Chaplain Worship | 103 | 348 | -245 | -70% | 425 | -322 | -76% | 2304 | 3452 | -1148 | -33% |
| Volunteer (Christian, Muslim) Worship | 132 | 64 | 68 | 106% | 73 | 59 | 81% | 767 | 766 | 1 | 0% |
| Total Worship Sessions | 13 | 17 | -4 | -24% | 15 | -2 | -13% | 177 | 153 | 24 | 16% |
| Chaplain Worship | 5 | 12 | -7 | -58% | 10 | -5 | -50% | 78 | 102 | -24 | -24% |
| Volunteer (Christian, Muslim) Worship | 8 | 5 | 3 | 60% | 5 | 3 | 60% | 99 | 51 | 48 | 94% |

Green: decrease Red: increase
Counting incident numbers not offenses.

*Comprehensive PREA Education added Apr17

4th Floor North and South September-17

| Incidents | This Month to Last Month | | | | Same Month Last Year | | | Year to Date (Last Year/This Year) | | | |
|------------------------|--------------------------|--------|-------|--------|----------------------|-------|--------|------------------------------------|------|-------|--------|
| | Sep-17 | Aug-17 | (+/-) | % Chng | Sep-16 | (+/-) | % Chng | 2017 | 2016 | (+/-) | % Chng |
| 4th Floor Unit | 95 | 85 | 10 | 12% | 264 | -169 | -64% | 953 | 2542 | -1589 | -63% |
| Assaultive | 18 | 8 | 10 | 125% | 22 | -4 | -18% | 139 | 156 | -17 | -11% |
| Non- Assaultive | 74 | 73 | 1 | 1% | 227 | -153 | -67% | 771 | 2162 | -1391 | -64% |
| Contraband | 3 | 4 | -1 | -25% | 15 | -12 | -80% | 43 | 224 | -181 | -81% |

| Programs | This Month to Last Month | | | | Same Month Last Year | | | Year to Date (Last Year/This Year) | | | |
|------------------------------|--------------------------|--------|-------|--------|----------------------|-------|--------|------------------------------------|-------|-------|--------|
| | Sep-17 | Aug-17 | (+/-) | % Chng | Sep-16 | (+/-) | % Chng | 2017 | 2016 | (+/-) | % Chng |
| Participant | 1411 | 1741 | -330 | -19% | 1946 | -535 | -27% | 9697 | 15871 | -6174 | -39% |
| Alcohol & Drugs | 35 | 49 | -14 | -29% | 301 | -266 | -88% | 84 | 2755 | -2671 | -97% |
| Anger Management | 75 | 197 | -122 | -62% | 308 | -233 | -76% | 1426 | 2795 | -1369 | -49% |
| Moral Reconciliation Therapy | 0 | 68 | -68 | -100% | 300 | -300 | -100% | 501 | 2725 | -2224 | -82% |
| SCS | 83 | 97 | -14 | -14% | 84 | -1 | -1% | 555 | 528 | 27 | 5% |
| HIV | 0 | 0 | 0 | 0% | 0 | 0 | 0% | 0 | 0 | 0 | 0% |
| Life Skills | 0 | 56 | -56 | -100% | 160 | -160 | -100% | 571 | 1412 | -841 | -60% |
| Inside Out Dad | 28 | 23 | 5 | 22% | 45 | -17 | -38% | 217 | 464 | -247 | -53% |
| Real Talk | 0 | 0 | 0 | 0% | 302 | -302 | -100% | 572 | 2746 | -2174 | -79% |
| Domestic Violence Awareness | 0 | 71 | -71 | -100% | 160 | -160 | -100% | 723 | 1043 | -320 | -31% |
| Adult Education | 0 | 0 | 0 | 0% | 286 | -286 | -100% | 708 | 1403 | -695 | -50% |
| Gym/Recreation | 2492 | 2243 | 249 | 11% | 0 | 2492 | 0% | 14306 | 3776 | 10530 | 279% |
| Comprehensive PREA Education | 2 | 13 | -11 | -85% | 0 | 2 | 0% | 409 | 0 | 409 | 0% |
| Therapeutic Community | 1188 | 1125 | 63 | 6% | 0 | 1188 | 0% | 3046 | 0 | 3046 | 0% |
| Sessions | 67 | 84 | -17 | -20% | 79 | -12 | -15% | 520 | 644 | -124 | -19% |
| Alcohol & Drugs | 2 | 3 | -1 | -33% | 8 | -6 | -75% | 5 | 72 | -67 | -93% |
| Anger Management | 3 | 7 | -4 | -57% | 8 | -5 | -63% | 48 | 73 | -25 | -34% |
| Moral Reconciliation Therapy | 0 | 2 | -2 | -100% | 8 | -8 | -100% | 19 | 72 | -53 | -74% |
| SCS | 27 | 30 | -3 | -10% | 24 | 3 | 13% | 194 | 163 | 31 | 19% |
| HIV | 0 | 0 | 0 | 0% | 0 | 0 | 0% | 0 | 0 | 0 | 0% |
| Life Skills | 0 | 2 | -2 | -100% | 4 | -4 | -100% | 21 | 36 | -15 | -42% |
| Inside Out Dad | 3 | 3 | 0 | 0% | 4 | -1 | -25% | 26 | 36 | -10 | -28% |
| Real Talk | 0 | 0 | 0 | 0% | 8 | -8 | -100% | 16 | 72 | -56 | -78% |
| Domestic Violence Awareness | 0 | 2 | -2 | -100% | 4 | -4 | -100% | 23 | 27 | -4 | -15% |
| Adult Education | 0 | 0 | 0 | 0% | 11 | -11 | -100% | 36 | 93 | -57 | -61% |
| Gym/Recreation | 0 | 0 | 0 | 0% | 0 | 0 | 0% | 0 | 81 | -81 | -100% |
| Comprehensive PREA Education | 1 | 4 | -3 | -75% | 0 | 1 | 0% | 27 | 0 | 27 | 0% |
| Therapeutic Community | 31 | 30 | 1 | 3% | 0 | 31 | 0% | 80 | 0 | 80 | 0% |

| Religious Services | This Month to Last Month | | | | Same Month Last Year | | | Year to Date (Last Year/This Year) | | | |
|---------------------------------------|--------------------------|--------|-------|--------|----------------------|-------|--------|------------------------------------|------|-------|--------|
| | Sep-17 | Aug-17 | (+/-) | % Chng | Sep-16 | (+/-) | % Chng | 2017 | 2016 | (+/-) | % Chng |
| Total Worship Participants | 226 | 183 | 43 | 23% | 276 | -50 | -18% | 3529 | 2869 | 660 | 23% |
| Chaplain Worship | 120 | 139 | -19 | -14% | 142 | -22 | -15% | 1287 | 1836 | -549 | -30% |
| Volunteer (Christian, Muslim) Worship | 106 | 44 | 62 | 141% | 134 | -28 | -21% | 2242 | 1033 | 1209 | 117% |
| Total Worship Sessions | 23 | 17 | 6 | 35% | 18 | 5 | 28% | 229 | 232 | -3 | -1% |
| Chaplain Worship | 15 | 12 | 3 | 25% | 10 | 5 | 50% | 121 | 166 | -45 | -27% |
| Volunteer (Christian, Muslim) Worship | 8 | 5 | 3 | 60% | 8 | 0 | 0% | 108 | 66 | 42 | 64% |

Green: decrease Red: increase

Counting incident numbers not offenses.

*Comprehensive PREA Education added Apr17

*Therapeutic Community added Jul17

Poplar Place

September-17



| Incidents | This Month to Last Month | | | | Same Month Last Year | | | Year to Date (Last Year/This Year) | | | |
|------------------|--------------------------|--------|-------|--------|----------------------|-------|--------|------------------------------------|------|-------|--------|
| | Sep-17 | Aug-17 | (+/-) | % Chng | Sep-16 | (+/-) | % Chng | 2017 | 2016 | (+/-) | % Chng |
| 3rd Floor | 199 | 268 | -69 | -26% | 237 | -38 | -16% | 1783 | 2033 | -250 | -12% |
| Assaultive | 18 | 10 | 8 | 80% | 14 | 4 | 29% | 112 | 91 | 21 | 23% |
| Non- Assaultive | 175 | 253 | -78 | -31% | 220 | -45 | -20% | 1621 | 1907 | -286 | -15% |
| Contraband | 6 | 5 | 1 | 20% | 3 | 3 | 100% | 50 | 35 | 15 | 43% |

| Programs | This Month to Last Month | | | | Same Month Last Year | | | Year to Date (Last Year/This Year) | | | |
|------------------------------|--------------------------|--------|-------|--------|----------------------|-------|--------|------------------------------------|-------|-------|--------|
| | Sep-17 | Aug-17 | (+/-) | % Chng | Sep-16 | (+/-) | % Chng | 2017 | 2016 | (+/-) | % Chng |
| Participants | 1075 | 1403 | -328 | -23% | 1614 | -539 | -33% | 9182 | 14120 | -4938 | -35% |
| Alcohol & Drugs | 80 | 79 | 1 | 1% | 152 | -72 | -47% | 715 | 1372 | -657 | -48% |
| Anger Management | 0 | 0 | 0 | 0% | 147 | -147 | -100% | 583 | 1345 | -762 | -57% |
| Life Skills | 302 | 133 | 169 | 127% | 285 | 17 | 6% | 1598 | 2613 | -1015 | -39% |
| SCS | 22 | 15 | 7 | 47% | 36 | -14 | -39% | 297 | 263 | 34 | 13% |
| Moral Reconciliation Therapy | 211 | 285 | -74 | -26% | 308 | -97 | -31% | 1671 | 2690 | -1019 | -38% |
| HIV | 0 | 0 | 0 | 0% | 0 | 0 | 0% | 0 | 0 | 0 | 0% |
| Real Talk | 0 | 112 | -112 | -100% | 302 | -302 | -100% | 350 | 2756 | -2406 | -87% |
| Inside Out Dad | 146 | 139 | 7 | 5% | 41 | 105 | 256% | 417 | 451 | -34 | -8% |
| Creative Writing | 0 | 0 | 0 | 0% | 62 | -62 | -100% | 81 | 619 | -538 | -87% |
| Domestic Violence Awareness | 44 | 40 | 4 | 10% | 142 | -98 | -69% | 586 | 1315 | -729 | -55% |
| Gym/Recreation | 2671 | 2595 | 76 | 3% | 2667 | 4 | 0% | 12467 | 20210 | -7743 | -38% |
| Thinking for Change | 216 | 288 | -72 | -25% | 139 | 77 | 55% | 1541 | 696 | 845 | 121% |
| Comprehensive PREA Education | 18 | 99 | -81 | -82% | 0 | 18 | 0% | 700 | 0 | 700 | 0% |
| Sessions | 42 | 60 | -18 | -30% | 56 | -14 | -25% | 391 | 497 | -106 | -21% |
| Alcohol & Drugs | 2 | 2 | 0 | 0% | 4 | -2 | -50% | 21 | 36 | -15 | -42% |
| Anger Management | 0 | 0 | 0 | 0% | 4 | -4 | -100% | 20 | 36 | -16 | -44% |
| Life Skills | 8 | 4 | 4 | 100% | 8 | 0 | 0% | 46 | 72 | -26 | -36% |
| SCS | 9 | 7 | 2 | 29% | 8 | 1 | 13% | 61 | 82 | -21 | -26% |
| Moral Reconciliation Therapy | 6 | 8 | -2 | -25% | 8 | -2 | -25% | 50 | 72 | -22 | -31% |
| HIV | 0 | 0 | 0 | 0% | 0 | 0 | 0% | 0 | 0 | 0 | 0% |
| Real Talk | 0 | 3 | -3 | -100% | 8 | -8 | -100% | 10 | 73 | -63 | -86% |
| Inside Out Dad | 4 | 4 | 0 | 0% | 4 | 0 | 0% | 24 | 36 | -12 | -33% |
| Creative Writing | 0 | 0 | 0 | 0% | 4 | -4 | -100% | 6 | 36 | -30 | -83% |
| Domestic Violence Awareness | 2 | 2 | 0 | 0% | 4 | -2 | -50% | 18 | 32 | -14 | -44% |
| Gym/Recreation | 81 | 79 | 2 | 3% | 73 | 8 | 11% | 421 | 552 | -131 | -24% |
| Thinking for Change | 6 | 8 | -2 | -25% | 4 | 2 | 50% | 48 | 22 | 26 | 118% |
| Comprehensive PREA Education | 4 | 15 | -11 | -73% | 0 | 4 | 0% | 59 | 0 | 59 | 0% |

| Religious Services | This Month to Last Month | | | | Same Month Last Year | | | Year to Date (Last Year/This Year) | | | |
|---------------------------------------|--------------------------|--------|-------|--------|----------------------|-------|--------|------------------------------------|------|-------|--------|
| | Sep-17 | Aug-17 | (+/-) | % Chng | Sep-16 | (+/-) | % Chng | 2017 | 2016 | (+/-) | % Chng |
| Total Worship Participants | 478 | 764 | -286 | -37% | 532 | -54 | -10% | 5091 | 6321 | -1230 | -19% |
| Chaplain Worship | 395 | 680 | -285 | -42% | 452 | -57 | -13% | 3551 | 4357 | -806 | -18% |
| Volunteer (Christian, Muslim) Worship | 83 | 84 | -1 | -1% | 80 | 3 | 4% | 1540 | 1964 | -424 | -22% |
| Total Worship Sessions | 22 | 25 | -3 | -12% | 22 | 0 | 0% | 218 | 211 | 7 | 3% |
| Chaplain Worship | 13 | 18 | -5 | -28% | 15 | -2 | -13% | 101 | 133 | -32 | -24% |
| Volunteer (Christian, Muslim) Worship | 9 | 7 | 2 | 29% | 7 | 2 | 29% | 117 | 78 | 39 | 50% |

Green: decrease Red: increase

Counting incident numbers not offenses.

*Thinking for Change started Apr16

*Comprehensive PREA Education added Apr17

Poplar Place Extended

September-17



| Incidents | This Month to Last Month | | | | Same Month Last Year | | | Year to Date (Last Year/This Year) | | | |
|-----------------|--------------------------|--------|-------|--------|----------------------|-------|--------|------------------------------------|------|-------|--------|
| | Sep-17 | Aug-17 | (+/-) | % Chng | Sep-16 | (+/-) | % Chng | 2017 | 2016 | (+/-) | % Chng |
| Annex | 24 | 29 | -5 | -17% | 43 | -19 | -44% | 172 | 408 | -236 | -58% |
| Assaultive | 2 | 1 | 1 | 100% | 0 | 2 | 0% | 10 | 12 | -2 | -17% |
| Non- Assaultive | 22 | 27 | -5 | -19% | 43 | -21 | -49% | 154 | 389 | -235 | -60% |
| Contraband | 0 | 1 | -1 | -100% | 0 | 0 | 0% | 8 | 7 | 1 | 14% |

| Programs | This Month to Last Month | | | | Same Month Last Year | | | Year to Date (Last Year/This Year) | | | |
|------------------------------|--------------------------|--------|-------|--------|----------------------|-------|--------|------------------------------------|-------|-------|--------|
| | Sep-17 | Aug-17 | (+/-) | % Chng | Sep-16 | (+/-) | % Chng | 2017 | 2016 | (+/-) | % Chng |
| Participants | 963 | 1102 | -139 | -13% | 2154 | -1191 | -55% | 8941 | 17711 | -8770 | -50% |
| Alcohol & Drugs | 71 | 154 | -83 | -54% | 179 | -108 | -60% | 674 | 1636 | -962 | -59% |
| Anger Management | 160 | 213 | -53 | -25% | 171 | -11 | -6% | 1269 | 1463 | -194 | -13% |
| Life Skills | 99 | 167 | -68 | -41% | 317 | -218 | -69% | 1009 | 2883 | -1874 | -65% |
| SCS | 38 | 48 | -10 | -21% | 67 | -29 | -43% | 320 | 301 | 19 | 6% |
| Moral Reconciliation Therapy | 37 | 43 | -6 | -14% | 331 | -294 | -89% | 899 | 2949 | -2050 | -70% |
| HIV | 0 | 0 | 0 | 0% | 0 | 0 | 0% | 0 | 0 | 0 | 0% |
| Real Talk | 405 | 332 | 73 | 22% | 690 | -285 | -41% | 2259 | 6047 | -3788 | -63% |
| Pre GED | 33 | 101 | -68 | -67% | 179 | -146 | -82% | 348 | 598 | -250 | -42% |
| Inside Out Dad | 0 | 0 | 0 | 0% | 45 | -45 | -100% | 164 | 322 | -158 | -49% |
| Domestic Violence Awareness | 0 | 0 | 0 | 0% | 175 | -175 | -100% | 565 | 1512 | -947 | -63% |
| Gym/Recreation | 456 | 392 | 64 | 16% | 737 | -281 | -38% | 2754 | 5093 | -2339 | -46% |
| Comprehensive PREA Education | 26 | 30 | -4 | -13% | 0 | 26 | 0% | 528 | 0 | 528 | 0% |
| Sessions | 51 | 68 | -17 | -25% | 76 | -25 | -33% | 456 | 556 | -100 | -18% |
| Alcohol & Drugs | 4 | 4 | 0 | 0% | 4 | 0 | 0% | 21 | 37 | -16 | -43% |
| Anger Management | 4 | 5 | -1 | -20% | 4 | 0 | 0% | 33 | 34 | -1 | -3% |
| Life Skills | 3 | 4 | -1 | -25% | 8 | -5 | -63% | 35 | 74 | -39 | -53% |
| SCS | 14 | 17 | -3 | -18% | 16 | -2 | -13% | 103 | 89 | 14 | 16% |
| Moral Reconciliation Therapy | 1 | 2 | -1 | -50% | 8 | -7 | -88% | 26 | 76 | -50 | -66% |
| HIV | 0 | 0 | 0 | 0% | 0 | 0 | 0% | 0 | 0 | 0 | 0% |
| Real Talk | 10 | 8 | 2 | 25% | 16 | -6 | -38% | 62 | 141 | -79 | -56% |
| Pre GED | 4 | 9 | -5 | -56% | 10 | -6 | -60% | 39 | 31 | 8 | 26% |
| Inside Out Dad | 0 | 0 | 0 | 0% | 6 | -6 | -100% | 22 | 40 | -18 | -45% |
| Domestic Violence Awareness | 0 | 0 | 0 | 0% | 4 | -4 | -100% | 15 | 34 | -19 | -56% |
| Gym/Recreation | 0 | 0 | 0 | 0% | 0 | 0 | 0% | 0 | 0 | 0 | 0% |
| Comprehensive PREA Education | 9 | 12 | -3 | -25% | 0 | 9 | 0% | 58 | 0 | 58 | 0% |

| Religious Services | This Month to Last Month | | | | Same Month Last Year | | | Year to Date (Last Year/This Year) | | | |
|---------------------------------------|--------------------------|--------|-------|--------|----------------------|-------|--------|------------------------------------|------|-------|--------|
| | Sep-17 | Aug-17 | (+/-) | % Chng | Sep-16 | (+/-) | % Chng | 2017 | 2016 | (+/-) | % Chng |
| Total Worship Participants | 405 | 357 | 48 | 13% | 562 | -157 | -28% | 3513 | 5147 | -1634 | -32% |
| Chaplain Worship | 125 | 129 | -4 | -3% | 168 | -43 | -26% | 983 | 1970 | -987 | -50% |
| Volunteer (Christian, Muslim) Worship | 280 | 228 | 52 | 23% | 394 | -114 | -29% | 2530 | 3177 | -647 | -20% |
| Total Worship Sessions | 26 | 28 | -2 | -7% | 24 | 2 | 8% | 276 | 255 | 21 | 8% |
| Chaplain Worship | 10 | 13 | -3 | -23% | 11 | -1 | -9% | 93 | 121 | -28 | -23% |
| Volunteer (Christian, Muslim) Worship | 16 | 15 | 1 | 7% | 13 | 3 | 23% | 183 | 134 | 49 | 37% |

Green: decrease Red: increase

* Counting incident numbers not offenses.

*Comprehensive PREA Education added Apr17

Team New Chicago

September-17

| Incidents | This Month to Last Month | | | | Same Month Last Year | | | Year to Date (Last Year/This Year) | | | |
|-----------------------------|--------------------------|--------|-------|--------|----------------------|-------|--------|------------------------------------|------|-------|--------|
| | Sep-17 | Aug-17 | (+/-) | % Chng | Sep-16 | (+/-) | % Chng | 2017 | 2016 | (+/-) | % Chng |
| 2nd Floor | 79 | 33 | 46 | 139% | 53 | 26 | 49% | 361 | 470 | -109 | -23% |
| Assaultive | 11 | 8 | 3 | 38% | 6 | 5 | 83% | 64 | 53 | 11 | 21% |
| Non- Assaultive | 66 | 25 | 41 | 164% | 41 | 25 | 61% | 278 | 399 | -121 | -30% |
| Contraband | 2 | 0 | 2 | 0% | 6 | -4 | -67% | 19 | 18 | 1 | 6% |
| 2nd Floor JM Housing | 0 | 0 | 0 | 0% | 0 | 0 | 0% | 0 | 0 | 0 | 0% |
| Assaultive | 0 | 0 | 0 | 0% | 0 | 0 | 0% | 0 | 0 | 0 | 0% |
| Non- Assaultive | 0 | 0 | 0 | 0% | 0 | 0 | 0% | 0 | 0 | 0 | 0% |
| Contraband | 0 | 0 | 0 | 0% | 0 | 0 | 0% | 0 | 0 | 0 | 0% |

| Programs | This Month to Last Month | | | | Same Month Last Year | | | Year to Date (Last Year/This Year) | | | |
|-------------------------------|--------------------------|--------|-------|--------|----------------------|-------|--------|------------------------------------|------|-------|--------|
| | Sep-17 | Aug-17 | (+/-) | % Chng | Sep-16 | (+/-) | % Chng | 2017 | 2016 | (+/-) | % Chng |
| 2nd Floor Participants | 237 | 292 | -55 | -19% | 239 | -2 | -1% | 2964 | 2040 | 924 | 45% |
| Alcohol and Drugs | 0 | 0 | 0 | 0% | 59 | -59 | -100% | 0 | 134 | -134 | -100% |
| Anger Management | 97 | 50 | 47 | 94% | 58 | 39 | 67% | 744 | 601 | 143 | 24% |
| Life Skills | 41 | 88 | -47 | -53% | 58 | -17 | -29% | 585 | 591 | -6 | -1% |
| SCS | 13 | 34 | -21 | -62% | 0 | 13 | 0% | 194 | 118 | 76 | 64% |
| Moral Reconation Therapy | 0 | 0 | 0 | 0% | 0 | 0 | 0% | 0 | 0 | 0 | 0% |
| HIV | 0 | 0 | 0 | 0% | 0 | 0 | 0% | 0 | 0 | 0 | 0% |
| Real Talk | 59 | 61 | -2 | -3% | 64 | -5 | -8% | 1078 | 596 | 482 | 81% |
| Gym/Recreation | 291 | 271 | 20 | 7% | 264 | 27 | 10% | 2479 | 2492 | -13 | -1% |
| Comprehensive PREA Education | 27 | 59 | -32 | -54% | 0 | 27 | 0% | 301 | 0 | 301 | 0% |
| 2nd Floor Sessions | 22 | 31 | -9 | -29% | 16 | 6 | 38% | 235 | 171 | 64 | 37% |
| Alcohol and Drugs | 0 | 0 | 0 | 0% | 4 | -4 | -100% | 0 | 9 | -9 | -100% |
| Anger Management | 4 | 2 | 2 | 100% | 4 | 0 | 0% | 31 | 36 | -5 | -14% |
| Life Skills | 2 | 4 | -2 | -50% | 4 | -2 | -50% | 25 | 36 | -11 | -31% |
| SCS | 5 | 9 | -4 | -44% | 0 | 5 | 0% | 52 | 54 | -2 | -4% |
| Moral Reconation Therapy | 0 | 0 | 0 | 0% | 0 | 0 | 0% | 0 | 0 | 0 | 0% |
| HIV | 0 | 0 | 0 | 0% | 0 | 0 | 0% | 0 | 0 | 0 | 0% |
| Real Talk | 4 | 6 | -2 | -33% | 4 | 0 | 0% | 77 | 36 | 41 | 114% |
| Gym/Recreation | 0 | 0 | 0 | 0% | 0 | 0 | 0% | 0 | 0 | 0 | 0% |
| Comprehensive PREA Education | 7 | 10 | -3 | -30% | 0 | 7 | 0% | 46 | 0 | 46 | 0% |

| Religious Services | This Month to Last Month | | | | Same Month Last Year | | | Year to Date (Last Year/This Year) | | | |
|---------------------------------------|--------------------------|--------|-------|--------|----------------------|-------|--------|------------------------------------|------|-------|--------|
| | Sep-17 | Aug-17 | (+/-) | % Chng | Sep-16 | (+/-) | % Chng | 2017 | 2016 | (+/-) | % Chng |
| Total Worship Participants | 130 | 92 | 38 | 41% | 309 | -179 | -58% | 1188 | 1812 | -624 | -34% |
| Chaplain Worship | 72 | 53 | 19 | 36% | 166 | -94 | -57% | 593 | 862 | -269 | -31% |
| Volunteer (Christian, Muslim) Worship | 58 | 39 | 19 | 49% | 143 | -85 | -59% | 595 | 950 | -355 | -37% |
| Total Worship Sessions | 12 | 8 | 4 | 50% | 10 | 2 | 20% | 127 | 74 | 53 | 72% |
| Chaplain Worship | 4 | 3 | 1 | 33% | 5 | -1 | -20% | 27 | 30 | -3 | -10% |
| Volunteer (Christian, Muslim) Worship | 8 | 5 | 3 | 60% | 5 | 3 | 60% | 100 | 44 | 56 | 127% |

Green: decrease Red: increase

Counting incident numbers not offenses.

*Comprehensive PREA Education added Apr17

Mental Health

September-17

| Programs | This Month to Last Month | | | | Same Month Last Year | | | Year to Date (Last Year/This Year) | | | |
|---|--------------------------|--------|-------|--------|----------------------|-------|--------|------------------------------------|-------|-------|--------|
| | Sep-17 | Aug-17 | (+/-) | % Chng | Sep-16 | (+/-) | % Chng | 2017 | 2016 | (+/-) | % Chng |
| 2nd Floor Mental Health Participants | 352 | 182 | 170 | 93% | 1435 | -1083 | -75% | 4616 | 11483 | -6867 | -60% |
| Alcohol and Drugs | 0 | 0 | 0 | 0% | 72 | -72 | -100% | 54 | 210 | -156 | -74% |
| Alcoholics Anonymous | 0 | 0 | 0 | 0% | 0 | 0 | 0% | 0 | 34 | -34 | -100% |
| Real Talk | 195 | 45 | 150 | 333% | 232 | -37 | -16% | 1621 | 2090 | -469 | -22% |
| Group Therapy | 41 | 27 | 14 | 52% | 144 | -103 | -72% | 727 | 1195 | -468 | -39% |
| SCS | 5 | 0 | 5 | 0% | 50 | -45 | -90% | 5 | 93 | -88 | -95% |
| Life Skills | 20 | 0 | 20 | 0% | 167 | -147 | -88% | 310 | 1300 | -990 | -76% |
| HIV | 0 | 0 | 0 | 0% | 0 | 0 | 0% | 0 | 0 | 0 | 0% |
| Book Club | 0 | 0 | 0 | 0% | 0 | 0 | 0% | 0 | 0 | 0 | 0% |
| Goals Group | 0 | 0 | 0 | 0% | 120 | -120 | -100% | 221 | 968 | -747 | -77% |
| MRT | 0 | 0 | 0 | 0% | 0 | 0 | 0% | 0 | 0 | 0 | 0% |
| Anger Management | 12 | 10 | 2 | 20% | 142 | -130 | -92% | 235 | 1233 | -998 | -81% |
| Domestic Violence Awareness | 20 | 8 | 12 | 150% | 148 | -128 | -86% | 218 | 1121 | -903 | -81% |
| Men Issue (Parenting) | 0 | 0 | 0 | 0% | 89 | -89 | -100% | 0 | 830 | -830 | -100% |
| Story Telling | 0 | 0 | 0 | 0% | 0 | 0 | 0% | 0 | 0 | 0 | 0% |
| Let's Get Started | 11 | 28 | -17 | -61% | 271 | -260 | -96% | 984 | 2181 | -1197 | -55% |
| Gym/Recreation | 0 | 0 | 0 | 0% | 0 | 0 | 0% | 0 | 0 | 0 | 0% |
| Thinking for Good | 0 | 0 | 0 | 0% | 0 | 0 | 0% | 0 | 228 | -228 | -100% |
| Comprehensive PREA Education | 0 | 20 | -20 | -100% | 0 | 0 | 0% | 77 | 0 | 77 | 0% |
| Creative Art | 48 | 44 | 4 | 9% | 0 | 48 | 0% | 164 | 0 | 164 | 0% |
| 2nd Floor Mental Health Sessions | 47 | 19 | 28 | 147% | 90 | -43 | -48% | 425 | 761 | -336 | -44% |
| Alcohol and Drugs | 0 | 0 | 0 | 0% | 4 | -4 | -100% | 5 | 13 | -8 | -62% |
| Alcoholics Anonymous | 0 | 0 | 0 | 0% | 0 | 0 | 0% | 0 | 2 | -2 | -100% |
| Real Talk | 25 | 6 | 19 | 317% | 14 | 11 | 79% | 153 | 136 | 17 | 13% |
| Group Therapy | 5 | 3 | 2 | 67% | 9 | -4 | -44% | 68 | 85 | -17 | -20% |
| SCS | 5 | 0 | 5 | 0% | 7 | -2 | -29% | 5 | 31 | -26 | -84% |
| Life Skills | 3 | 0 | 3 | 0% | 9 | -6 | -67% | 29 | 82 | -53 | -65% |
| HIV | 0 | 0 | 0 | 0% | 0 | 0 | 0% | 0 | 0 | 0 | 0% |
| Book Club | 0 | 0 | 0 | 0% | 0 | 0 | 0% | 0 | 0 | 0 | 0% |
| Goals Group | 0 | 0 | 0 | 0% | 8 | -8 | -100% | 18 | 63 | -45 | -71% |
| MRT | 0 | 0 | 0 | 0% | 0 | 0 | 0% | 0 | 0 | 0 | 0% |
| Anger Management | 2 | 1 | 1 | 100% | 8 | -6 | -75% | 23 | 74 | -51 | -69% |
| Domestic Violence Awareness | 2 | 1 | 1 | 100% | 9 | -7 | -78% | 21 | 70 | -49 | -70% |
| Men Issue (Parenting) | 0 | 0 | 0 | 0% | 6 | -6 | -100% | 0 | 54 | -54 | -100% |
| Story Telling | 0 | 0 | 0 | 0% | 0 | 0 | 0% | 0 | 0 | 0 | 0% |
| Let's Get Started | 2 | 4 | -2 | -50% | 16 | -14 | -88% | 87 | 137 | -50 | -36% |
| Gym/Recreation | 0 | 0 | 0 | 0% | 0 | 0 | 0% | 0 | 0 | 0 | 0% |
| Thinking for Good | 0 | 0 | 0 | 0% | 0 | 0 | 0% | 0 | 14 | -14 | -100% |
| Comprehensive PREA Education | 0 | 1 | -1 | -100% | 0 | 0 | 0% | 5 | 0 | 5 | 0% |
| Creative Art | 3 | 3 | 0 | 0% | 0 | 3 | 0% | 11 | 0 | 11 | 0% |

Green: decrease Red: increase

*Gym/Recreation are included with 2nd floor numbers

*Comprehensive PREA Education added Apr17

*Creative Art added Jul17

Jail Suicide Watch Report

September-17

| Jail Suicide Watch | This Month to Last Month | | | | Same Month Last Year | | | Year to Date (Last Year/This Year) | | | |
|--|--------------------------|--------|-------|--------|----------------------|-------|--------|------------------------------------|------|-------|--------|
| | Sep-17 | Aug-17 | (+/-) | % Chng | Sep-16 | (+/-) | % Chng | 2017 | 2016 | (+/-) | % Chng |
| Total Watch Events | 37 | 35 | 2 | 6% | 61 | -24 | -39% | 361 | 478 | -117 | -24% |
| Total Days on all Watch | 115 | 89 | 26 | 29% | 199 | -84 | -42% | 1002 | 1454 | -452 | -31% |
| Average Number of Days on Watch | 3.84 | 2.87 | 0.97 | 34% | 3.26 | 0.58 | 18% | 3.67 | 4 | -0.01 | 0% |
| Number of Threats / Ideations | 32 | 21 | 11 | 52% | 42 | -10 | -24% | 259 | 280 | -21 | -8% |
| Number of Gestures | 1 | 2 | -1 | -50% | 2 | -1 | -50% | 17 | 51 | -34 | -67% |
| Number of Precaution | 3 | 11 | -8 | -73% | 13 | -10 | -77% | 67 | 134 | -67 | -50% |
| Number of Attempts | 1 | 1 | 0 | 0% | 4 | -3 | -75% | 18 | 13 | 5 | 38% |
| Number of Completed Suicides | 0 | 0 | 0 | 0% | 0 | 0 | 0% | 0 | 1 | -1 | -100% |
| Initial Housing Location | 37 | 35 | 2 | 6% | 61 | -24 | -39% | 366 | 477 | -111 | -23% |
| Intake | 16 | 14 | 2 | 14% | 24 | -8 | -33% | 116 | 151 | -35 | -23% |
| LL | 5 | 1 | 4 | 400% | 8 | -3 | -38% | 31 | 76 | -45 | -59% |
| Admin-Seg | 8 | 0 | 8 | 0% | 2 | 6 | 300% | 25 | 27 | -2 | -7% |
| 1st Floor | 0 | 4 | -4 | -100% | 1 | -1 | -100% | 34 | 23 | 11 | 48% |
| 2nd Floor | 3 | 3 | 0 | 0% | 9 | -6 | -67% | 56 | 83 | -27 | -33% |
| 3rd Floor | 2 | 7 | -5 | -71% | 4 | -2 | -50% | 33 | 39 | -6 | -15% |
| 4th Floor | 2 | 5 | -3 | -60% | 11 | -9 | -82% | 53 | 59 | -6 | -10% |
| 5th Floor | 1 | 1 | 0 | 0% | 1 | 0 | 0% | 7 | 7 | 0 | 0% |
| 6th Floor | 0 | 0 | 0 | 0% | 0 | 0 | 0% | 10 | 11 | -1 | -9% |
| JM Housing | 0 | 0 | 0 | 0% | 1 | -1 | -100% | 1 | 1 | 0 | 0% |
| Suicide Watch Location | 37 | 35 | 2 | 6% | 61 | -24 | -39% | 366 | 477 | -111 | -23% |
| Admin-Seg | 0 | 0 | 0 | 0% | 0 | 0 | 0% | 5 | 8 | -3 | -38% |
| 2Q | 21 | 17 | 4 | 24% | 31 | -10 | -32% | 138 | 225 | -87 | -39% |
| 2M | 4 | 9 | -5 | -56% | 12 | -8 | -67% | 101 | 124 | -23 | -19% |
| 2N | 0 | 0 | 0 | 0% | 0 | 0 | 0% | 1 | 0 | 1 | 0% |
| 2K | 0 | 0 | 0 | 0% | 0 | 0 | 0% | 0 | 0 | 0 | 0% |
| 4J | 7 | 7 | 0 | 0% | 14 | -7 | -50% | 77 | 77 | 0 | 0% |
| 1E | 4 | 1 | 3 | 300% | 4 | 0 | 0% | 42 | 40 | 2 | 5% |
| 4A | 0 | 0 | 0 | 0% | 0 | 0 | 0% | 0 | 0 | 0 | 0% |
| 4B | 1 | 1 | 0 | 0% | 0 | 1 | 0% | 2 | 3 | -1 | -33% |
| Pt located in JM Housing 2J | 0 | 0 | 0 | 0% | 0 | 0 | 0% | 0 | 0 | 0 | 0% |

Green: decrease Red: increase

* Number of completed suicides are not to be counted in the total watch events

* 4B added Feb16

Jail East Suicide Watch Report

September-17

| Jail East Suicide Watch | This Month to Last Month | | | | Same Month Last Year | | | Year to Date (Last Year/This Year) | | | |
|--|--------------------------|--------|-------|--------|----------------------|-------|--------|------------------------------------|------|-------|--------|
| | Sep-17 | Aug-17 | (+/-) | % Chng | Sep-16 | (+/-) | % Chng | 2017 | 2016 | (+/-) | % Chng |
| Total Watch Events | 14 | 2 | 12 | 600% | 13 | 1 | 8% | 103 | 128 | -25 | -20% |
| Total Days on all Watch | 25 | 10 | 15 | 150% | 31 | -6 | -19% | 197 | 364 | -167 | -46% |
| Average Number of Days on Watch | 0.84 | 0.33 | 0.51 | 155% | 2.38 | -1.54 | -65% | 0.72 | 3 | -2 | -74% |
| Number of Threats / Ideations | 11 | 0 | 11 | 0% | 10 | 1 | 10% | 80 | 105 | -25 | -24% |
| Number of Gestures | 2 | 2 | 0 | 0% | 3 | -1 | -33% | 13 | 10 | 3 | 30% |
| Number of Precaution | 1 | 0 | 1 | 0% | 0 | 1 | 0% | 10 | 13 | -3 | -23% |
| Number of Attempts | 0 | 0 | 0 | 0% | 0 | 0 | 0% | 0 | 0 | 0 | 0% |
| Number of Completed Suicides | 0 | 0 | 0 | 0% | 0 | 0 | 0% | 0 | 0 | 0 | 0% |
| Initial Housing Location | 14 | 2 | 12 | 600% | 13 | 1 | 8% | 97 | 129 | -32 | -25% |
| Intake | 7 | 0 | 7 | 0% | 9 | -2 | -22% | 43 | 40 | 3 | 8% |
| JE-B | 1 | 0 | 1 | 0% | 0 | 1 | 0% | 2 | 6 | -4 | -67% |
| JE-C | 0 | 1 | -1 | -100% | 1 | -1 | -100% | 1 | 5 | -4 | -80% |
| JE-D | 0 | 0 | 0 | 0% | 0 | 0 | 0% | 11 | 7 | 4 | 57% |
| JE-E | 1 | 0 | 1 | 0% | 2 | -1 | -50% | 10 | 20 | -10 | -50% |
| JE-F | 3 | 1 | 2 | 200% | 1 | 2 | 200% | 21 | 33 | -12 | -36% |
| JE-G | 2 | 0 | 2 | 0% | 0 | 2 | 0% | 9 | 18 | -9 | -50% |
| Suicide Watch Location | 14 | 1 | 13 | 1300% | 12 | 2 | 17% | 96 | 124 | -28 | -23% |
| JE-F | 14 | 1 | 13 | 1300% | 12 | 2 | 17% | 96 | 124 | -28 | -23% |
| JE-C | 0 | 1 | -1 | -100% | 1 | -1 | -100% | 1 | 4 | -3 | -75% |

Green: decrease Red: increase

* Number of completed suicides are not to be counted in the total watch events

Stone Bay September-17

| Incidents | This Month to Last Month | | | | Same Month Last Year | | | Year to Date (Last Year/This Year) | | | |
|-------------------------|--------------------------|--------|-------|--------|----------------------|-------|--------|------------------------------------|------|-------|--------|
| | Sep-17 | Aug-17 | (+/-) | % Chng | Sep-16 | (+/-) | % Chng | 2017 | 2016 | (+/-) | % Chng |
| 1st Floor | 10 | 11 | -1 | -9% | 27 | -17 | -63% | 104 | 273 | -169 | -62% |
| Assaultive | 5 | 6 | -1 | -17% | 5 | 0 | 0% | 31 | 35 | -4 | -11% |
| Non- Assaultive | 5 | 5 | 0 | 0% | 21 | -16 | -76% | 58 | 218 | -160 | -73% |
| Contraband | 0 | 0 | 0 | 0% | 1 | -1 | -100% | 15 | 20 | -5 | -25% |
| Gym / Recreation | 10 | 0 | 10 | 0% | 12 | -2 | -17% | 52 | 165 | -113 | -68% |

Processing September-17

| Incidents | This Month to Last Month | | | | Same Month Last Year | | | Year to Date (Last Year/This Year) | | | |
|---------------------------------|--------------------------|--------|-------|--------|----------------------|-------|--------|------------------------------------|------|-------|--------|
| | Sep-17 | Aug-17 | (+/-) | % Chng | Sep-16 | (+/-) | % Chng | 2017 | 2016 | (+/-) | % Chng |
| Lower Level North/Intake | 23 | 19 | 4 | 21% | 12 | 11 | 92% | 125 | 99 | 26 | 26% |
| Assaultive | 1 | 3 | -2 | -67% | 4 | -3 | -75% | 24 | 17 | 7 | 41% |
| Non- Assaultive | 14 | 13 | 1 | 8% | 6 | 8 | 133% | 77 | 54 | 23 | 43% |
| Contraband | 8 | 3 | 5 | 167% | 2 | 6 | 300% | 24 | 28 | -4 | -14% |

Lower Level South/Tunnel September-17

| Incidents | This Month to Last Month | | | | Same Month Last Year | | | Year to Date (Last Year/This Year) | | | |
|---------------------------------|--------------------------|--------|-------|--------|----------------------|-------|--------|------------------------------------|------|-------|--------|
| | Sep-17 | Aug-17 | (+/-) | % Chng | Sep-16 | (+/-) | % Chng | 2017 | 2016 | (+/-) | % Chng |
| Lower Level South/Tunnel | 33 | 32 | 1 | 3% | 40 | -7 | -18% | 121 | 355 | -234 | -66% |
| Assaultive | 2 | 4 | -2 | -50% | 8 | -6 | -75% | 13 | 48 | -35 | -73% |
| Non- Assaultive | 30 | 25 | 5 | 20% | 29 | 1 | 3% | 101 | 263 | -162 | -62% |
| Contraband | 1 | 3 | -2 | -67% | 3 | -2 | -67% | 7 | 44 | -37 | -84% |
| Court Arrests | 220 | 214 | 6 | 3% | 0 | 220 | 0% | 1503 | 1145 | 358 | 31% |
| Gym / Recreation | 435 | 648 | -213 | -33% | 0 | 435 | 0% | 2487 | 0 | 2487 | 0% |

Green: decrease Red: increase

Electronic Law Library & Paralegal Report

September-17

| ELL Stats | This Month to Last Month | | | | Same Month Last Year | | | Year to Date (Last Year/This Year) | | | |
|-------------------|--------------------------|--------|-------|--------|----------------------|-------|--------|------------------------------------|------|-------|--------|
| | Sep-17 | Aug-17 | (+/-) | % Chng | Sep-16 | (+/-) | % Chng | 2017 | 2016 | (+/-) | % Chng |
| ELL TOTALS | 604 | 703 | -99 | -14% | 731 | -127 | -17% | 6091 | 6860 | -769 | -11% |
| Used | 305 | 242 | 63 | 26% | 353 | -48 | -14% | 2532 | 2429 | 103 | 4% |
| Refused | 7 | 1 | 6 | 600% | 7 | 0 | 0% | 50 | 204 | -154 | -75% |
| Released | 1 | 0 | 1 | 0% | 0 | 1 | 0% | 25 | 31 | -6 | -19% |
| Relocated | 1 | 0 | 1 | 0% | 2 | -1 | -50% | 33 | 65 | -32 | -49% |
| Paralegal | 299 | 461 | -162 | -35% | 378 | -79 | -21% | 3559 | 4431 | -872 | -20% |

Green: decrease Red: increase

JE Electronic Law Library & Paralegal Report

September-17

| JE ELL Stats | This Month to Last Month | | | | Same Month Last Year | | | Year to Date (Last Year/This Year) | | | |
|----------------------|--------------------------|--------|-------|--------|----------------------|-------|--------|------------------------------------|------|-------|--------|
| | Sep-17 | Aug-17 | (+/-) | % Chng | Sep-16 | (+/-) | % Chng | 2017 | 2016 | (+/-) | % Chng |
| JE ELL TOTALS | 6 | 17 | -11 | -65% | 0 | 6 | 0% | 139 | 27 | 112 | 415% |
| Used | 6 | 17 | -11 | -65% | 0 | 6 | 0% | 116 | 15 | 101 | 673% |
| Refused | 1 | 0 | 1 | 0% | 0 | 1 | 0% | 6 | 0 | 6 | 0% |
| Released | 0 | 0 | 0 | 0% | 0 | 0 | 0% | 1 | 0 | 1 | 0% |
| Relocated | 0 | 0 | 0 | 0% | 0 | 0 | 0% | 0 | 0 | 0 | 0% |
| Paralegal | 0 | 0 | 0 | 0% | 0 | 0 | 0% | 23 | 12 | 11 | 92% |

Green: decrease Red: increase



Jail DRT Report

September-17



| Jail DRT | This Month to Last Month | | | | Same Month Last Year | | | Year to Date (Last Year/This Year) | | | |
|--|--------------------------|--------|-------|--------|----------------------|-------|--------|------------------------------------|-------|-------|--------|
| | Sep-17 | Aug-17 | (+/-) | % Chng | Sep-16 | (+/-) | % Chng | 2017 | 2016 | (+/-) | % Chng |
| Callouts | 1 | 0 | 1 | 0% | 5 | -4 | -80% | 15 | 19 | -4 | -21% |
| 7 - 3 Shift | 0 | 0 | 0 | 0% | 5 | -5 | -100% | 10 | 17 | -7 | -41% |
| 3 - 11 Shift | 1 | 0 | 1 | 0% | 0 | 1 | 0% | 5 | 1 | 4 | 400% |
| 11- 7 Shift | 0 | 0 | 0 | 0% | 0 | 0 | 0% | 0 | 1 | -1 | -100% |
| Referrals / Escorts | 1733 | 1863 | -130 | -7% | 1665 | 68 | 4% | 13546 | 16742 | -3196 | -19% |
| 7 - 3 Shift | 905 | 995 | -90 | -9% | 982 | -77 | -8% | 7671 | 10405 | -2734 | -26% |
| 3 - 11 Shift | 418 | 345 | 73 | 21% | 311 | 107 | 34% | 3051 | 2712 | 339 | 13% |
| 11- 7 Shift | 410 | 523 | -113 | -22% | 372 | 38 | 10% | 2824 | 3625 | -801 | -22% |
| Shakedown Team | 0 | 0 | 0 | 0% | 0 | 0 | 0% | 0 | 0 | 0 | 0% |
| **SCCC Escorts | 18 | 21 | -3 | -14% | 35 | -17 | -49% | 133 | 290 | -157 | -54% |
| Areas Patrolled | 86 | 107 | -21 | -20% | 315 | -229 | -73% | 929 | 3582 | -2653 | -74% |
| 7 - 3 Shift | 31 | 42 | -11 | -26% | 70 | -39 | -56% | 471 | 1062 | -591 | -56% |
| 3 - 11 Shift | 38 | 44 | -6 | -14% | 24 | 14 | 58% | 225 | 396 | -171 | -43% |
| 11- 7 Shift | 17 | 21 | -4 | -19% | 221 | -204 | -92% | 233 | 2124 | -1891 | -89% |
| DRT Shakedowns | 4892 | 5827 | -935 | -16% | 5812 | -920 | -16% | 47865 | 53041 | -5176 | -10% |
| Clothed Body Search | 2930 | 3563 | -633 | -18% | 3586 | -656 | -18% | 29437 | 33779 | -4342 | -13% |
| Random (Cell Searches) | 1866 | 2152 | -286 | -13% | 2076 | -210 | -10% | 17498 | 17997 | -499 | -3% |
| Random (Entire Pod) | 76 | 92 | -16 | -17% | 130 | -54 | -42% | 750 | 1085 | -335 | -31% |
| Scheduled (Entire Pod) | 20 | 20 | 0 | 0% | 20 | 0 | 0% | 180 | 180 | 0 | 0% |
| Grievances | 4 | 2 | 2 | 100% | 3 | 1 | 33% | 57 | 32 | 25 | 78% |
| Codes (Red,White,Blue) Response | 369 | 352 | 17 | 5% | 265 | 104 | 39% | 2676 | 2474 | 202 | 8% |

| K-9 Unit | This Month to Last Month | | | | Same Month Last Year | | | Year to Date (Last Year/This Year) | | | |
|----------------------------------|--------------------------|--------|--------|--------|----------------------|-------|--------|------------------------------------|--------|-------|--------|
| | Sep-17 | Aug-17 | (+/-) | % Chng | Sep-16 | (+/-) | % Chng | 2017 | 2016 | (+/-) | % Chng |
| Total Searches / K-9 Unit | 3484 | 5168 | -1,684 | -33% | 2,821 | 663 | 24% | 39,124 | 34,302 | 4,822 | 14% |
| Clothed Body Search | 1021 | 1343 | -322 | -24% | 776 | 245 | 32% | 9,846 | 10,708 | -862 | -8% |
| Cell Searches | 890 | 1093 | -203 | -19% | 758 | 132 | 17% | 8,614 | 8,686 | -72 | -1% |
| Area Searches | 98 | 85 | 13 | 15% | 86 | 12 | 14% | 931 | 986 | -55 | -6% |
| Commissary Totes | 1411 | 2495 | -1084 | -43% | 1129 | 282 | 25% | 18770 | 13055 | 5715 | 44% |
| Laundry Bins | 64 | 152 | -88 | -58% | 72 | -8 | -11% | 963 | 867 | 96 | 11% |

| Jail Transportation Stats | This Month to Last Month | | | | Same Month Last Year | | | Year to Date (Last Year/This Year) | | | |
|-----------------------------------|--------------------------|--------|-------|--------|----------------------|-------|--------|------------------------------------|-------|-------|--------|
| | Sep-17 | Aug-17 | (+/-) | % Chng | Sep-16 | (+/-) | % Chng | 2017 | 2016 | (+/-) | % Chng |
| Total Transportation Trips | 615 | 605 | 10 | 2% | 550 | 65 | 12% | 5,459 | 4,791 | 668 | 14% |
| Within County Trips | 549 | 526 | 23 | 4% | 531 | 18 | 3% | 4,749 | 4,632 | 117 | 3% |
| Out of County Trips | 13 | 12 | 1 | 8% | 11 | 2 | 18% | 103 | 115 | -12 | -10% |
| Juvenile Court Trips | 47 | 59 | -12 | -20% | 0 | 47 | 0% | 388 | 0 | 388 | 0% |
| Mental Health Trips | 0 | 0 | 0 | 0% | 0 | 0 | 0% | 81 | 0 | 81 | 0% |
| Non-Arrest Civilians | 6 | 8 | -2 | -25% | 8 | -2 | -25% | 138 | 44 | 94 | 214% |

Green: decrease Red: increase

* Juvenile Court Trips added Jan17

* Mental Trips added Mar17

Jail Gang Report September-17

| Jail Gang Stats | This Month to Last Month | | | | Same Month Last Year | | | Year to Date (Last Year/This Year) | | | |
|--|--------------------------|--------|-------|--------|----------------------|-------|--------|------------------------------------|------|-------|--------|
| | Sep-17 | Aug-17 | (+/-) | % Chng | Sep-16 | (+/-) | % Chng | 2017 | 2016 | (+/-) | % Chng |
| Gang Related Incidents | 1 | 1 | 0 | 0% | 2 | -1 | -50% | 15 | 18 | -3 | -17% |
| 201 Poplar | 1 | 0 | 1 | 0% | 2 | -1 | -50% | 12 | 15 | -3 | -20% |
| Jail East | 0 | 1 | -1 | -100% | 0 | 0 | 0% | 3 | 3 | 0 | 0% |
| Total Incidents Reviewed | 71 | 93 | -22 | -24% | 191 | -120 | -63% | 801 | 2164 | -1363 | -63% |
| Total Violent Incidents Reviewed | 33 | 46 | -13 | -28% | 54 | -21 | -39% | 402 | 604 | -202 | -33% |
| Assault to Staff | 5 | 2 | 3 | 150% | 9 | -4 | -44% | 48 | 63 | -15 | -24% |
| Spit/Urine/Feces/Staff | 0 | 1 | -1 | -100% | 3 | -3 | -100% | 10 | 40 | -30 | -75% |
| Threat to Staff by Inmate | 3 | 6 | -3 | -50% | 16 | -13 | -81% | 30 | 206 | -176 | -85% |
| Inmate Assault | 25 | 37 | -12 | -32% | 26 | -1 | -4% | 314 | 295 | 19 | 6% |
| Total Incidents Reviewed Not Generated by JMS | 1 | 2 | -1 | -50% | 0 | 1 | 0% | 12 | 6 | 6 | 100% |
| Total Gang Validations | 11 | 24 | -13 | -54% | 5 | 6 | 120% | 627 | 290 | 337 | 116% |
| Intake Validated | 11 | 21 | -10 | -48% | 3 | 8 | 267% | 383 | 185 | 198 | 107% |
| Facility Validated | 0 | 3 | -3 | -100% | 2 | -2 | -100% | 234 | 97 | 137 | 141% |
| Field Validated | 0 | 0 | 0 | 0% | 0 | 0 | 0% | 10 | 8 | 2 | 25% |
| Total Updated (Validation) Files | 527 | 592 | -65 | -11% | 98 | 429 | 438% | 3812 | 1198 | 2614 | 218% |
| Intake Validated | 217 | 241 | -24 | -10% | 97 | 120 | 124% | 2040 | 1040 | 1000 | 96% |
| Facility Validated | 310 | 351 | -41 | -12% | 1 | 309 | 30900% | 1760 | 123 | 1637 | 1331% |
| Field Validated | 0 | 0 | 0 | 0% | 0 | 0 | 0% | 12 | 35 | -23 | -66% |
| Total Interviewed in Intake | 1278 | 1517 | -239 | -16% | 395 | 883 | 224% | 14051 | 5282 | 8769 | 166% |
| Total Interviewed in Facility | 132 | 120 | 12 | 10% | 33 | 99 | 300% | 3518 | 2953 | 565 | 19% |
| Weekly Avg. Known Gang Members | 880 | 877 | 3 | 0% | 665 | 215 | 32% | 802 | 671 | 131 | 20% |
| Gangster Disciple | 221 | 219 | 2 | 1% | 163 | 58 | 36% | 209 | 162 | 47 | 29% |
| Vice Lords | 208 | 211 | -3 | -1% | 165 | 43 | 26% | 200 | 161 | 39 | 24% |
| Crips | 220 | 218 | 2 | 1% | 169 | 51 | 30% | 205 | 182 | 23 | 13% |
| Others | 231 | 229 | 2 | 1% | 168 | 63 | 38% | 221 | 166 | 55 | 33% |
| Latino | 5 | 5 | 0 | 0% | 6 | -1 | -17% | 5 | 7 | -2 | -30% |
| Associates (Insufficient points for validation) | 40 | 41 | -1 | -2% | 30 | 10 | 33% | 45 | 28 | 17 | 63% |
| Adult Gang Members CJC | 902 | 908 | -6 | -1% | 688 | 214 | 31% | 7770 | 6236 | 1534 | 25% |
| Juvenile Gang Members CJC | 0 | 0 | 0 | 0% | 0 | 0 | 0% | 0 | 0 | 0 | 0% |
| Total Gang Members CJC | 902 | 908 | -6 | -1% | 688 | 214 | 31% | 7770 | 6236 | 1534 | 25% |
| Juvenile Gang Members JE | 15 | 5 | 10 | 200% | 3 | 12 | 400% | 55 | 34 | 21 | 62% |
| Female Gang Members JE | 5 | 5 | 0 | 0% | 4 | 1 | 25% | 45 | 37 | 8 | 22% |
| Total Gang Members JE | 20 | 10 | 10 | 100% | 7 | 13 | 186% | 100 | 71 | 29 | 41% |
| Total Gang Members | 922 | 918 | 4 | 0% | 695 | 227 | 33% | 7870 | 6307 | 1563 | 25% |
| Total Gang Members Released | 0 | 0 | 0 | 0% | 436 | -436 | -100% | 0 | 3513 | -3513 | -100% |

Green: decrease Red: increase

GIB - General Investigations Bureau Report

September-17

| GIB Stats | This Month to Last Month | | | | Same Month Last Year | | | Year to Date (Last Year/This Year) | | | |
|---------------------------------|--------------------------|--------|-------|--------|----------------------|-------|--------|------------------------------------|------|-------|--------|
| | Sep-17 | Aug-17 | (+/-) | % Chng | Sep-16 | (+/-) | % Chng | 2017 | 2016 | (+/-) | % Chng |
| New Cases Opened | 23 | 29 | -6 | -21% | 41 | -18 | -44% | 238 | 303 | -65 | -21% |
| Total Incidents Reviewed | 25 | 30 | -5 | -17% | 152 | -127 | -84% | 292 | 2213 | -1921 | -87% |
| Total Cases | 23 | 29 | -6 | -21% | 41 | -18 | -44% | 238 | 283 | -45 | -16% |
| PREA / Cases Sent to Sex Crimes | 11 | 24 | -13 | -54% | 29 | -18 | -62% | 169 | 247 | -78 | -32% |
| Counterfeit / Forgery | 2 | 0 | 2 | 0% | 3 | -1 | -33% | 6 | 16 | -10 | -63% |
| Attempt Suicide | 1 | 0 | 1 | 0% | 1 | 0 | 0% | 5 | 7 | -2 | -29% |
| Assaults | 5 | 2 | 3 | 150% | 6 | -1 | -17% | 23 | 10 | 13 | 130% |
| Seized Contraband | 2 | 1 | 1 | 100% | 2 | 0 | 0% | 21 | 3 | 18 | 600% |
| Other | 2 | 2 | 0 | 0% | 0 | 2 | 0% | 14 | 0 | 14 | 0% |
| Disposition | 6 | 2 | 4 | 200% | 6 | 0 | 0% | 52 | 27 | 25 | 93% |
| Arrest | 0 | 1 | -1 | -100% | 5 | -5 | -100% | 4 | 25 | -21 | -84% |
| Warrant Issued | 2 | 1 | 1 | 100% | 0 | 2 | 0% | 36 | 1 | 35 | 3500% |
| Victim Refuse to Prosecute | 4 | 0 | 4 | 0% | 1 | 3 | 300% | 12 | 1 | 11 | 1100% |

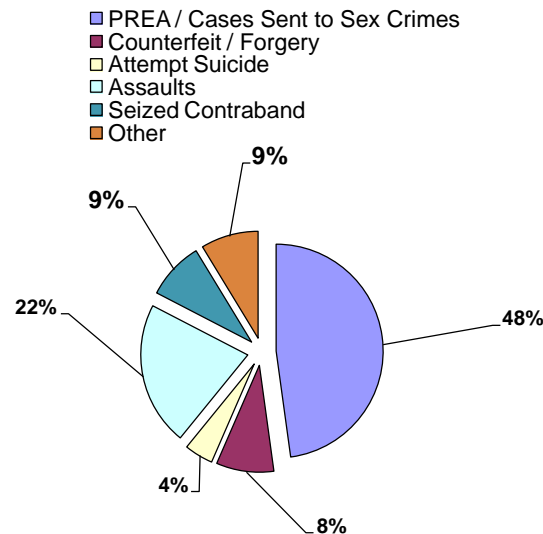
Green: decrease Red: increase

* Counterfeit/Forgery started Mar16

* Attempt Suicide started Jun16

* Assaults, Seized Contraband & Other added Aug16

Total Cases



Jail Inmate Disciplinary Data

September-17

| Jail Disciplinary Stats | This Month to Last Month | | | | Same Month Last Year | | | Year to Date (Last Year/This Year) | | | |
|--|--------------------------|--------|-------|--------|----------------------|-------|--------|------------------------------------|------|-------|--------|
| | Sep-17 | Aug-17 | (+/-) | % Chng | Sep-16 | (+/-) | % Chng | 2017 | 2016 | (+/-) | % Chng |
| Disciplinary Hearings Scheduled | 269 | 323 | -54 | -17% | 262 | 7 | 3% | 2100 | 2446 | -346 | -14% |
| Disciplinary Outcomes | 228 | 273 | -45 | -16% | 193 | 35 | 18% | 1725 | 1725 | 0 | 0% |
| Sentenced Detention | 133 | 160 | -27 | -17% | 128 | 5 | 4% | 1163 | 1222 | -59 | -5% |
| Probation | 46 | 46 | 0 | 0% | 21 | 25 | 119% | 212 | 146 | 66 | 45% |
| Not Guilty | 6 | 12 | -6 | -50% | 2 | 4 | 200% | 62 | 23 | 39 | 170% |
| Disciplinary Sanctions | 16 | 23 | -7 | -30% | 16 | 0 | 0% | 100 | 187 | -87 | -47% |
| Victims | 15 | 27 | -12 | -44% | 20 | -5 | -25% | 145 | 137 | 8 | 6% |
| Medical | 12 | 5 | 7 | 140% | 6 | 6 | 100% | 43 | 10 | 33 | 330% |
| Dismissals | 41 | 50 | -9 | -18% | 69 | -28 | -41% | 375 | 721 | -346 | -48% |
| Due to Procedural Violations | 15 | 25 | -10 | -40% | 23 | -8 | -35% | 178 | 244 | -66 | -27% |
| Released | 26 | 18 | 8 | 44% | 31 | -5 | -16% | 170 | 258 | -88 | -34% |
| Refer Backs | 0 | 7 | -7 | -100% | 15 | -15 | -100% | 27 | 219 | -192 | -88% |
| Sanction by Floors | 504 | 539 | -35 | -6% | 612 | -108 | -18% | 3882 | 5878 | -1996 | -34% |
| 6th Floor | 60 | 53 | 7 | 13% | 82 | -22 | -27% | 327 | 381 | -54 | -14% |
| 5th Floor | 64 | 52 | 12 | 23% | 74 | -10 | -14% | 324 | 359 | -35 | -10% |
| 4th Floor | 74 | 135 | -61 | -45% | 205 | -131 | -64% | 828 | 2109 | -1281 | -61% |
| 3rd Floor | 210 | 242 | -32 | -13% | 202 | 8 | 4% | 1983 | 1876 | 107 | 6% |
| 2nd Floor | 30 | 14 | 16 | 114% | 20 | 10 | 50% | 95 | 284 | -189 | -67% |
| 1st Floor | 12 | 12 | 0 | 0% | 0 | 12 | 0% | 96 | 275 | -179 | -65% |
| Lower Level | 5 | 4 | 1 | 25% | 10 | -5 | -50% | 25 | 172 | -147 | -85% |
| Annex | 49 | 27 | 22 | 81% | 19 | 30 | 158% | 204 | 422 | -218 | -52% |

Green: decrease Red: increase

Jail Grievance Report

September-17

| Jail Grievances | This Month to Last Month | | | | Same Month Last Year | | | Year to Date (Last Year/This Year) | | | |
|--|--------------------------|--------|-------|--------|----------------------|-------|--------|------------------------------------|------|-------|--------|
| | Sep-17 | Aug-17 | (+/-) | % Chng | Sep-16 | (+/-) | % Chng | 2017 | 2016 | (+/-) | % Chng |
| Total Grievances Received | 307 | 437 | -130 | -30% | 558 | -251 | -45% | 5101 | 4888 | 213 | 4% |
| 1st Floor Admin Seg | 48 | 65 | -17 | -26% | 78 | -30 | -38% | 754 | 706 | 48 | 7% |
| 2nd Floor | 24 | 27 | -3 | -11% | 70 | -46 | -66% | 455 | 526 | -71 | -13% |
| 3rd Floor South Side | 31 | 45 | -14 | -31% | 65 | -34 | -52% | 458 | 576 | -118 | -20% |
| 3rd Floor North Side | 29 | 57 | -28 | -49% | 43 | -14 | -33% | 460 | 493 | -33 | -7% |
| 4th Floor South Side | 43 | 97 | -54 | -56% | 97 | -54 | -56% | 1002 | 737 | 265 | 36% |
| 4th Floor North Side | 57 | 63 | -6 | -10% | 73 | -16 | -22% | 871 | 682 | 189 | 28% |
| 5th Floor | 11 | 18 | -7 | -39% | 28 | -17 | -61% | 161 | 251 | -90 | -36% |
| 6th Floor | 8 | 7 | 1 | 14% | 31 | -23 | -74% | 133 | 187 | -54 | -29% |
| Annex | 16 | 26 | -10 | -38% | 23 | -7 | -30% | 370 | 160 | 210 | 131% |
| Lower Level | 5 | 9 | -4 | -44% | 33 | -28 | -85% | 85 | 228 | -143 | -63% |
| Jail East | 35 | 23 | 12 | 52% | 15 | 20 | 133% | 352 | 338 | 14 | 4% |
| Juveniles | 0 | 0 | 0 | 0% | 2 | -2 | -100% | 0 | 4 | -4 | -100% |
| Total Non Valid Grievances Received | 186 | 224 | -38 | -17% | 282 | -96 | -34% | 2457 | 2517 | -60 | -2% |
| Total Valid Grievances Received | 121 | 213 | -92 | -43% | 276 | -155 | -56% | 2644 | 2371 | 273 | 12% |
| 201 Poplar | 116 | 192 | -76 | -40% | 265 | -149 | -56% | 2399 | 2205 | 194 | 9% |
| Staff Actions | 58 | 97 | -39 | -40% | 140 | -82 | -59% | 1263 | 1105 | 158 | 14% |
| Medical | 21 | 49 | -28 | -57% | 59 | -38 | -64% | 483 | 447 | 36 | 8% |
| Food Services | 11 | 10 | 1 | 10% | 19 | -8 | -42% | 105 | 148 | -43 | -29% |
| Programs | 1 | 11 | -10 | -91% | 12 | -11 | -92% | 90 | 91 | -1 | -1% |
| Maintenance | 7 | 6 | 1 | 17% | 1 | 6 | 600% | 45 | 45 | 0 | 0% |
| Laundry | 3 | 2 | 1 | 50% | 7 | -4 | -57% | 84 | 121 | -37 | -31% |
| Religious | 1 | 0 | 1 | 0% | 1 | 0 | 0% | 24 | 10 | 14 | 140% |
| Commissary | 4 | 10 | -6 | -60% | 2 | 2 | 100% | 91 | 80 | 11 | 14% |
| Aramark | 6 | 6 | 0 | 0% | 19 | -13 | -68% | 168 | 97 | 71 | 73% |
| Hygiene | 1 | 0 | 1 | 0% | 0 | 1 | 0% | 26 | 21 | 5 | 24% |
| Support Svc Heating/Cooling/Ventilation | 1 | 0 | 1 | 0% | 4 | -3 | -75% | 14 | 39 | -25 | -64% |
| Telecommunication | 2 | 1 | 1 | 100% | 1 | 1 | 100% | 6 | 1 | 5 | 500% |
| Jail East | 5 | 21 | -16 | -76% | 11 | -6 | -55% | 245 | 166 | 79 | 48% |
| Staff Actions | 0 | 8 | -8 | -100% | 5 | -5 | -100% | 92 | 96 | -4 | -4% |
| Medical | 4 | 10 | -6 | -60% | 2 | 2 | 100% | 41 | 25 | 16 | 64% |
| Food Services | 0 | 1 | -1 | -100% | 0 | 0 | 0% | 10 | 9 | 1 | 11% |
| Programs | 0 | 0 | 0 | 0% | 1 | -1 | -100% | 13 | 8 | 5 | 63% |
| Maintenance | 0 | 0 | 0 | 0% | 0 | 0 | 0% | 10 | 0 | 10 | 0% |
| Laundry | 0 | 0 | 0 | 0% | 0 | 0 | 0% | 6 | 7 | -1 | -14% |
| Religious | 0 | 0 | 0 | 0% | 0 | 0 | 0% | 0 | 0 | 0 | 0% |
| Commissary | 1 | 2 | -1 | -50% | 0 | 1 | 0% | 21 | 3 | 18 | 600% |
| Aramark | 0 | 0 | 0 | 0% | 3 | -3 | -100% | 33 | 7 | 26 | 371% |
| Hygiene | 0 | 0 | 0 | 0% | 0 | 0 | 0% | 13 | 6 | 7 | 117% |
| Support Svc Heating/Cooling/Ventilation | 0 | 0 | 0 | 0% | 0 | 0 | 0% | 5 | 5 | 0 | 0% |
| Telecommunication | 0 | 0 | 0 | 0% | 0 | 0 | 0% | 1 | 0 | 1 | 0% |
| Open/Unresolved Grievances Over 10 Days | 83 | 83 | 0 | 0% | 39 | 44 | 113% | 933 | 341 | 592 | 174% |
| Total Appealed Grievances | 31 | 65 | -34 | -52% | 77 | -46 | -60% | 397 | 484 | -87 | -18% |
| Number of Inm Filed Grievances | 0 | 0 | 0 | 0% | 0 | 0 | 0% | 0 | 0 | 0 | 0% |
| Percentage Inm Filed Grievances | 0% | 0% | 0% | 0% | 0% | 0% | 0% | 0% | 0% | 0% | 0% |

Green: decrease Red: increase

Programs grievances include legal room scheduling, television scheduling, recreations scheduling and counselors.

Jail East September-17

| Incidents | This Month to Last Month | | | | Same Month Last Year | | | Year to Date (Last Year/This Year) | | | |
|---------------------------------|--------------------------|--------|-------|--------|----------------------|-------|--------|------------------------------------|------|-------|--------|
| | Sep-17 | Aug-17 | (+/-) | % Chng | Sep-16 | (+/-) | % Chng | 2017 | 2016 | (+/-) | % Chng |
| Jail East | 140 | 134 | 6 | 4% | 122 | 18 | 15% | 1261 | 1316 | -55 | -4% |
| Assaultive | 5 | 5 | 0 | 0% | 3 | 2 | 67% | 39 | 39 | 0 | 0% |
| Non- Assaultive | 125 | 115 | 10 | 9% | 102 | 23 | 23% | 1115 | 1025 | 90 | 9% |
| Contraband | 10 | 14 | -4 | -29% | 17 | -7 | -41% | 107 | 252 | -145 | -58% |
| Jail East Male Juveniles | 0 | 0 | 0 | 0% | 1 | -1 | -100% | 0 | 21 | -21 | -100% |
| Assaultive | 0 | 0 | 0 | 0% | 0 | 0 | 0% | 0 | 4 | -4 | -100% |
| Non- Assaultive | 0 | 0 | 0 | 0% | 1 | -1 | -100% | 0 | 17 | -17 | -100% |
| Contraband | 0 | 0 | 0 | 0% | 0 | 0 | 0% | 0 | 0 | 0 | 0% |

| Jail East Contraband | This Month to Last Month | | | | Same Month Last Year | | | Year to Date (Last Year/This Year) | | | |
|----------------------|--------------------------|--------|-------|--------|----------------------|-------|--------|------------------------------------|------|-------|--------|
| | Sep-17 | Aug-17 | (+/-) | % Chng | Sep-16 | (+/-) | % Chng | 2017 | 2016 | (+/-) | % Chng |
| Jail East | 10 | 14 | -4 | -29% | 17 | -7 | -41% | 107 | 252 | -145 | -58% |
| Tobacco | 0 | 0 | 0 | 0% | 0 | 0 | 0% | 1 | 0 | 1 | 0% |
| Marijuana | 0 | 0 | 0 | 0% | 1 | -1 | -100% | 0 | 14 | -14 | -100% |
| Crack/Cocaine | 0 | 0 | 0 | 0% | 0 | 0 | 0% | 0 | 4 | -4 | -100% |
| Prescribed Meds | 1 | 2 | -1 | -50% | 2 | -1 | -50% | 5 | 9 | -4 | -44% |
| Weapons | 0 | 0 | 0 | 0% | 0 | 0 | 0% | 0 | 1 | -1 | -100% |
| Money | 0 | 2 | -2 | -100% | 0 | 0 | 0% | 4 | 6 | -2 | -33% |
| Other | 9 | 10 | -1 | -10% | 14 | -5 | -36% | 97 | 218 | -121 | -56% |

| Jail East Sec Ops Stats | This Month to Last Month | | | | Same Month Last Year | | | Year to Date (Last Year/This Year) | | | |
|---|--------------------------|--------|-------|--------|----------------------|-------|--------|------------------------------------|-------|-------|--------|
| | Sep-17 | Aug-17 | (+/-) | % Chng | Sep-16 | (+/-) | % Chng | 2017 | 2016 | (+/-) | % Chng |
| Total 30 day Entire Area Shakedown | 266 | 264 | 2 | 1% | 278 | -12 | -4% | 2,178 | 2,276 | -98 | -4% |
| Scheduled Shakedowns | 28 | 29 | -1 | -3% | 52 | -24 | -46% | 377 | 470 | -93 | -20% |
| (Repeat) Scheduled & Unscheduled Shkdw | 238 | 235 | 3 | 1% | 226 | 12 | 5% | 1,801 | 1,806 | -5 | 0% |
| Use of Force | 5 | 3 | 2 | 67% | 5 | 0 | 0% | 30 | 28 | 2 | 7% |
| Planned | 0 | 0 | 0 | 0% | 0 | 0 | 0% | 1 | 1 | 0 | 0% |
| Unplanned | 5 | 3 | 2 | 67% | 5 | 0 | 0% | 29 | 27 | 2 | 7% |
| Chemical | 5 | 3 | 2 | 67% | 3 | 2 | 67% | 24 | 28 | -4 | -14% |
| Restraint Chair (Security) | 0 | 0 | 0 | 0% | 0 | 0 | 0% | 0 | 0 | 0 | 0% |
| 4 Point Bed Restraints (Medical) | 0 | 0 | 0 | 0% | 0 | 0 | 0% | 0 | 0 | 0 | 0% |
| Stunn-Cuff | 0 | 0 | 0 | 0% | 0 | 0 | 0% | 0 | 0 | 0 | 0% |
| Fire Drills | 9 | 9 | 0 | 0% | 9 | 0 | 0% | 81 | 77 | 4 | 5% |
| Fire Drill Deficiencies | 0 | 0 | 0 | 0% | 0 | 0 | 0% | 2 | 2 | 0 | 0% |
| Medical Drill | 0 | 0 | 0 | 0% | 0 | 0 | 0% | 0 | 0 | 0 | 0% |
| Medical Drill Deficiencies | 0 | 0 | 0 | 0% | 0 | 0 | 0% | 0 | 0 | 0 | 0% |
| Code White | 0 | 0 | 0 | 0% | 0 | 0 | 0% | 0 | 281 | -281 | -100% |

Green: decrease Red: increase

Jail East Women Programs

September-17

| Programs | This Month to Last Month | | | | Same Month Last Year | | | Year to Date (Last Year/This Year) | | | |
|------------------------------|--------------------------|--------|-------|--------|----------------------|-------|--------|------------------------------------|-------|-------|--------|
| | Sep-17 | Aug-17 | (+/-) | % Chng | Sep-16 | (+/-) | % Chng | 2017 | 2016 | (+/-) | % Chng |
| Participants | 3934 | 4700 | -766 | -16% | 2098 | 1836 | 88% | 30082 | 19824 | 10258 | 52% |
| Alcohol Anonymous | 98 | 35 | 63 | 180% | 92 | 6 | 7% | 442 | 436 | 6 | 1% |
| Moral Reconation Therapy | 14 | 25 | -11 | -44% | 33 | -19 | -58% | 87 | 310 | -223 | -72% |
| Storybook | 29 | 17 | 12 | 71% | 23 | 6 | 26% | 204 | 177 | 27 | 15% |
| Commitment to Change | 368 | 280 | 88 | 31% | 342 | 26 | 8% | 2352 | 1774 | 578 | 33% |
| Job Readiness | 0 | 41 | -41 | -100% | 0 | 0 | 0% | 457 | 308 | 149 | 48% |
| Fitness/Aerobic | 372 | 603 | -231 | -38% | 131 | 241 | 184% | 3570 | 1231 | 2339 | 190% |
| Parenting | 461 | 98 | 363 | 370% | 90 | 371 | 412% | 2776 | 649 | 2127 | 328% |
| HIV Awareness | 0 | 70 | -70 | -100% | 0 | 0 | 0% | 138 | 130 | 8 | 6% |
| CAAP | 76 | 0 | 76 | 0% | 29 | 47 | 162% | 234 | 338 | -104 | -31% |
| Anger Management | 363 | 557 | -194 | -35% | 210 | 153 | 73% | 3201 | 1468 | 1733 | 118% |
| Alcohol & Drug | 0 | 0 | 0 | 0% | 0 | 0 | 0% | 0 | 64 | -64 | -100% |
| Real Talk | 222 | 209 | 13 | 6% | 0 | 222 | 0% | 1218 | 666 | 552 | 83% |
| SCS | 0 | 0 | 0 | 0% | 13 | -13 | -100% | 74 | 13 | 61 | 469% |
| Sister to Sister | 0 | 0 | 0 | 0% | 0 | 0 | 0% | 865 | 0 | 865 | 0% |
| Healing Beyond Trauma | 467 | 660 | -193 | -29% | 161 | 306 | 190% | 2723 | 1287 | 1436 | 112% |
| Pre GED Math / Reading | 14 | 53 | -39 | -74% | 0 | 14 | 0% | 288 | 198 | 90 | 45% |
| Book Club | 0 | 0 | 0 | 0% | 15 | -15 | -100% | 0 | 44 | -44 | -100% |
| Daily Devotion | 494 | 677 | -183 | -27% | 311 | 183 | 59% | 3584 | 6010 | -2426 | -40% |
| Sense of Self | 33 | 129 | -96 | -74% | 76 | -43 | -57% | 295 | 254 | 41 | 16% |
| Restricted Studies | 0 | 0 | 0 | 0% | 0 | 0 | 0% | 0 | 0 | 0 | 0% |
| Daily Word | 0 | 0 | 0 | 0% | 0 | 0 | 0% | 0 | 0 | 0 | 0% |
| Untangling Relationships | 0 | 126 | -126 | -100% | 71 | -71 | -100% | 1315 | 168 | 1147 | 683% |
| Gym/Recreation | 5574 | 4924 | 650 | 13% | 0 | 5574 | 0% | 23283 | 0 | 23283 | 0% |
| Comprehensive PREA Education | 47 | 59 | -12 | -20% | 0 | 47 | 0% | 410 | 0 | 410 | 0% |
| Other | 876 | 1061 | -185 | -17% | 501 | 375 | 75% | 5849 | 4299 | 1550 | 36% |

Sessions continued on next page

Jail East Women Programs (cont.)

September-17

| Sessions | This Month to Last Month | | | | Same Month Last Year | | | Year to Date (Last Year/This Year) | | | |
|------------------------------|--------------------------|--------|-------|--------|----------------------|-------|--------|------------------------------------|------|-------|--------|
| | Sep-17 | Aug-17 | (+/-) | % Chng | Sep-16 | (+/-) | % Chng | 2017 | 2016 | (+/-) | % Chng |
| Total Sessions | 149 | 181 | -32 | -18% | 106 | 43 | 41% | 1354 | 879 | 475 | 54% |
| Alcohol Anonymous | 3 | 2 | 1 | 50% | 7 | -4 | -57% | 18 | 29 | -11 | -38% |
| Moral Reconciliation Therapy | 1 | 2 | -1 | -50% | 5 | -4 | -80% | 13 | 44 | -31 | -70% |
| Storybook | 4 | 2 | 2 | 100% | 4 | 0 | 0% | 27 | 28 | -1 | -4% |
| Commitment to Change | 8 | 8 | 0 | 0% | 13 | -5 | -38% | 75 | 56 | 19 | 34% |
| Job Readiness | 0 | 1 | -1 | -100% | 0 | 0 | 0% | 18 | 14 | 4 | 29% |
| Fitness/Aerobic | 18 | 30 | -12 | -40% | 10 | 8 | 80% | 165 | 91 | 74 | 81% |
| Parenting | 13 | 3 | 10 | 333% | 3 | 10 | 333% | 96 | 27 | 69 | 256% |
| HIV Awareness | 0 | 2 | -2 | -100% | 0 | 0 | 0% | 8 | 5 | 3 | 60% |
| CAAP | 5 | 0 | 5 | 0% | 3 | 2 | 67% | 17 | 28 | -11 | -39% |
| Anger Management | 10 | 16 | -6 | -38% | 7 | 3 | 43% | 113 | 55 | 58 | 105% |
| Alcohol & Drug | 0 | 0 | 0 | 0% | 0 | 0 | 0% | 0 | 5 | -5 | -100% |
| Real Talk | 7 | 9 | -2 | -22% | 0 | 7 | 0% | 60 | 25 | 35 | 140% |
| SCS | 0 | 0 | 0 | 0% | 5 | -5 | -100% | 38 | 5 | 33 | 660% |
| Sister to Sister | 0 | 0 | 0 | 0% | 0 | 0 | 0% | 64 | 0 | 64 | 0% |
| Healing Beyond Trauma | 13 | 19 | -6 | -32% | 6 | 7 | 117% | 98 | 48 | 50 | 104% |
| Pre GED Math / Reading | 2 | 7 | -5 | -71% | 0 | 2 | 0% | 35 | 12 | 23 | 192% |
| Book Club | 0 | 0 | 0 | 0% | 3 | -3 | -100% | 0 | 6 | -6 | -100% |
| Daily Devotion | 13 | 21 | -8 | -38% | 11 | 2 | 18% | 122 | 194 | -72 | -37% |
| Sense of Self | 2 | 4 | -2 | -50% | 3 | -1 | -33% | 12 | 10 | 2 | 20% |
| Restricted Studies | 0 | 0 | 0 | 0% | 0 | 0 | 0% | 0 | 0 | 0 | 0% |
| Daily Word | 0 | 0 | 0 | 0% | 0 | 0 | 0% | 0 | 0 | 0 | 0% |
| Untangling Relationships | 0 | 4 | -4 | -100% | 6 | -6 | -100% | 57 | 18 | 39 | 217% |
| Gym/Recreation | 0 | 0 | 0 | 0% | 0 | 0 | 0% | 0 | 0 | 0 | 0% |
| Comprehensive PREA Education | 10 | 16 | -6 | -38% | 0 | 10 | 0% | 80 | 0 | 80 | 0% |
| Other | 40 | 35 | 5 | 14% | 20 | 20 | 100% | 238 | 179 | 59 | 33% |

| Religious Services | This Month to Last Month | | | | Same Month Last Year | | | Year to Date (Last Year/This Year) | | | |
|---------------------------------------|--------------------------|--------|-------|--------|----------------------|-------|--------|------------------------------------|------|-------|--------|
| | Sep-17 | Aug-17 | (+/-) | % Chng | Sep-16 | (+/-) | % Chng | 2017 | 2016 | (+/-) | % Chng |
| Total Worship Participants | 171 | 152 | 19 | 13% | 580 | -409 | -71% | 3962 | 3953 | 9 | 0% |
| Chaplain Worship | 19 | 116 | -97 | -84% | 300 | -281 | -94% | 2190 | 2328 | -138 | -6% |
| Volunteer (Christian, Muslim) Worship | 152 | 36 | 116 | 322% | 280 | -128 | -46% | 1772 | 1625 | 147 | 9% |
| Total Worship Sessions | 22 | 7 | 15 | 214% | 45 | -23 | -51% | 237 | 250 | -13 | -5% |
| Chaplain Worship | 1 | 4 | -3 | -75% | 24 | -23 | -96% | 118 | 142 | -24 | -17% |
| Volunteer (Christian, Muslim) Worship | 21 | 3 | 18 | 600% | 21 | 0 | 0% | 119 | 108 | 11 | 10% |

Green: decrease Red: increase

*Comprehensive PREA Education added Apr17

Jail East Disciplinary Data

September-17

| Jail East Disciplinary Stats | This Month to Last Month | | | | Same Month Last Year | | | Year to Date (Last Year/This Year) | | | |
|--|--------------------------|--------|-------|--------|----------------------|-------|--------|------------------------------------|------|-------|--------|
| | Sep-17 | Aug-17 | (+/-) | % Chng | Sep-16 | (+/-) | % Chng | 2017 | 2016 | (+/-) | % Chng |
| Disciplinary Hearings Scheduled | 12 | 33 | -21 | -64% | 50 | -38 | -76% | 159 | 309 | -150 | -49% |
| Disciplinary Outcomes | 11 | 19 | -8 | -42% | 45 | -34 | -76% | 110 | 247 | -137 | -55% |
| Sentenced Detention | 3 | 9 | -6 | -67% | 13 | -10 | -77% | 65 | 102 | -37 | -36% |
| Probation | 1 | 3 | -2 | -67% | 0 | 1 | 0% | 13 | 24 | -11 | -46% |
| Not Guilty | 1 | 0 | 1 | 0% | 24 | -23 | -96% | 3 | 81 | -78 | -96% |
| Disciplinary Sanctions | 1 | 1 | 0 | 0% | 0 | 1 | 0% | 6 | 5 | 1 | 20% |
| Victims | 0 | 4 | -4 | -100% | 3 | -3 | -100% | 9 | 18 | -9 | -50% |
| Medical | 5 | 2 | 3 | 150% | 5 | 0 | 0% | 14 | 17 | -3 | -18% |
| Dismissals | 1 | 14 | -13 | -93% | 5 | -4 | -80% | 49 | 62 | -13 | -21% |
| Due to Procedural Violations | 0 | 2 | -2 | -100% | 0 | 0 | 0% | 6 | 1 | 5 | 500% |
| Released | 1 | 12 | -11 | -92% | 5 | -4 | -80% | 43 | 61 | -18 | -30% |
| Refer Backs | 0 | 0 | 0 | 0% | 0 | 0 | 0% | 0 | 0 | 0 | 0% |
| Sanction by Floors | 0 | 0 | 0 | 0% | 113 | -113 | -100% | 474 | 1032 | -558 | -54% |

Green: decrease Red: increase

Jail East Male Juveniles

September-17

| Programs | This Month to Last Month | | | | Same Month Last Year | | | Year to Date (Last Year/This Year) | | | |
|------------------------------|--------------------------|--------|-------|--------|----------------------|-------|--------|------------------------------------|------|-------|--------|
| | Sep-17 | Aug-17 | (+/-) | % Chng | Sep-16 | (+/-) | % Chng | 2017 | 2016 | (+/-) | % Chng |
| Juvenile Participants | 1227 | 1716 | -489 | -28% | 838 | 389 | 46% | 12780 | 5377 | 7403 | 138% |
| Anger Management | 62 | 44 | 18 | 41% | 20 | 42 | 210% | 292 | 156 | 136 | 87% |
| Moral Reconation Therapy | 0 | 0 | 0 | 0% | 0 | 0 | 0% | 0 | 0 | 0 | 0% |
| Alcohol & Drugs | 0 | 0 | 0 | 0% | 0 | 0 | 0% | 0 | 0 | 0 | 0% |
| SCS | 284 | 679 | -395 | -58% | 392 | -108 | -28% | 3179 | 1449 | 1730 | 119% |
| Real Talk | 105 | 108 | -3 | -3% | 59 | 46 | 78% | 666 | 324 | 342 | 106% |
| Life Skills | 215 | 203 | 12 | 6% | 20 | 195 | 975% | 2363 | 418 | 1945 | 465% |
| Class Hope | 69 | 65 | 4 | 6% | 54 | 15 | 28% | 719 | 450 | 269 | 60% |
| Mentoring | 91 | 122 | -31 | -25% | 28 | 63 | 225% | 876 | 316 | 560 | 177% |
| Physical Fitness | 124 | 103 | 21 | 20% | 19 | 105 | 553% | 1072 | 391 | 681 | 174% |
| HIV / AIDS Awareness | 17 | 23 | -6 | -26% | 16 | 1 | 6% | 257 | 91 | 166 | 182% |
| Tutoring | 101 | 42 | 59 | 140% | 47 | 54 | 115% | 591 | 292 | 299 | 102% |
| G.A.N.G. INC | 0 | 0 | 0 | 0% | 0 | 0 | 0% | 0 | 25 | -25 | -100% |
| Library | 27 | 61 | -34 | -56% | 22 | 5 | 23% | 424 | 284 | 140 | 49% |
| Movie Night | 132 | 124 | 8 | 6% | 126 | 6 | 5% | 1557 | 969 | 588 | 61% |
| Gym/Recreation | 240 | 103 | 137 | 133% | 120 | 120 | 100% | 703 | 746 | -43 | -6% |
| Comprehensive PREA Education | 0 | 0 | 0 | 0% | 0 | 0 | 0% | 750 | 0 | 750 | 0% |
| Juvenile Sessions | 130 | 144 | -14 | -10% | 106 | 24 | 23% | 1125 | 1026 | 99 | 10% |
| Anger Management | 7 | 5 | 2 | 40% | 2 | 5 | 250% | 35 | 28 | 7 | 25% |
| Moral Reconation Therapy | 0 | 0 | 0 | 0% | 0 | 0 | 0% | 0 | 2 | -2 | -100% |
| Alcohol & Drugs | 0 | 0 | 0 | 0% | 0 | 0 | 0% | 0 | 2 | -2 | -100% |
| SCS | 40 | 34 | 6 | 18% | 41 | -1 | -2% | 238 | 232 | 6 | 3% |
| Real Talk | 10 | 13 | -3 | -23% | 7 | 3 | 43% | 59 | 53 | 6 | 11% |
| Life Skills | 14 | 10 | 4 | 40% | 4 | 10 | 250% | 173 | 72 | 101 | 140% |
| Class Hope | 6 | 8 | -2 | -25% | 3 | 3 | 100% | 63 | 59 | 4 | 7% |
| Mentoring | 11 | 19 | -8 | -42% | 5 | 6 | 120% | 100 | 80 | 20 | 25% |
| Physical Fitness | 8 | 6 | 2 | 33% | 2 | 6 | 300% | 79 | 65 | 14 | 22% |
| HIV / AIDS Awareness | 3 | 3 | 0 | 0% | 2 | 1 | 50% | 27 | 56 | -29 | -52% |
| Tutoring | 7 | 11 | -4 | -36% | 10 | -3 | -30% | 91 | 101 | -10 | -10% |
| G.A.N.G. INC | 0 | 0 | 0 | 0% | 0 | 0 | 0% | 0 | 5 | -5 | -100% |
| Library | 13 | 19 | -6 | -32% | 5 | 8 | 160% | 79 | 85 | -6 | -7% |
| Movie Night | 11 | 8 | 3 | 38% | 20 | -9 | -45% | 139 | 133 | 6 | 5% |
| Gym/Recreation | 20 | 5 | 15 | 300% | 14 | 6 | 43% | 39 | 111 | -72 | -65% |
| Comprehensive PREA Education | 0 | 0 | 0 | 0% | 0 | 0 | 0% | 31 | 0 | 31 | 0% |

| Religious Services | This Month to Last Month | | | | Same Month Last Year | | | Year to Date (Last Year/This Year) | | | |
|---------------------------------------|--------------------------|--------|-------|--------|----------------------|-------|--------|------------------------------------|------|-------|--------|
| | Sep-17 | Aug-17 | (+/-) | % Chng | Sep-16 | (+/-) | % Chng | 2017 | 2016 | (+/-) | % Chng |
| Total Worship Participants | 633 | 687 | -54 | -8% | 29 | 604 | 2083% | 2640 | 1505 | 1135 | 75% |
| Chaplain Worship | 207 | 266 | -59 | -22% | 18 | 189 | 1050% | 1070 | 424 | 646 | 152% |
| Volunteer (Christian, Muslim) Worship | 426 | 421 | 5 | 1% | 11 | 415 | 3773% | 1570 | 1081 | 489 | 45% |
| Total Worship Sessions | 41 | 44 | -3 | -7% | 3 | 38 | 1267% | 286 | 178 | 108 | 61% |
| Chaplain Worship | 12 | 15 | -3 | -20% | 2 | 10 | 500% | 164 | 39 | 125 | 321% |
| Volunteer (Christian, Muslim) Worship | 29 | 29 | 0 | 0% | 1 | 28 | 2800% | 122 | 139 | -17 | -12% |

Green: decrease Red: increase

Counting incident numbers not offenses.

*Comprehensive PREA Education added Apr17

Jail Medical Report - Jail East

September-17

| Jail Medical Stats - JE | This Month to Last Month | | | | Same Month Last Year | | | Year to Date (Last Year/This Year) | | | |
|--|--------------------------|--------|-------|--------|----------------------|-------|--------|------------------------------------|------|-------|--------|
| | Sep-17 | Aug-17 | (+/-) | % Chng | Sep-16 | (+/-) | % Chng | 2017 | 2016 | (+/-) | % Chng |
| *Health Assessments | 108 | 107 | 1 | 1% | 103 | 5 | 5% | 824 | 971 | -147 | -15% |
| *Health Assessment Completion Ratio | 78% | 96% | -18% | -19% | 96% | -18% | -19% | 71% | 92% | -21% | -23% |
| On-Site Emergency Responses | 31 | 37 | -6 | -16% | 15 | 16 | 107% | 275 | 284 | -9 | -3% |
| Total Sick-Call Completion Ratio | 73% | 93% | -20% | -22% | 93% | -20% | -22% | 81% | 97% | -15% | -16% |
| Total Sick-Call | 626 | 617 | 9 | 1% | 604 | 22 | 4% | 5794 | 5256 | 538 | 10% |
| Nurse Sick-Call | 457 | 465 | -8 | -2% | 434 | 23 | 5% | 4334 | 3976 | 358 | 9% |
| Mental Health Sick-Call | 149 | 132 | 17 | 13% | 146 | 3 | 2% | 1271 | 1050 | 221 | 21% |
| Dental Sick-Call | 20 | 20 | 0 | 0% | 24 | -4 | -17% | 189 | 230 | -41 | -18% |
| Total Visits | 290 | 299 | -9 | -3% | 346 | -56 | -16% | 2715 | 2746 | -31 | -1% |
| Medical Provider Patient Visits | 182 | 183 | -1 | -1% | 192 | -10 | -5% | 1723 | 1554 | 169 | 11% |
| Mental Health Provider Patient Visits | 108 | 116 | -8 | -7% | 154 | -46 | -30% | 992 | 1192 | -200 | -17% |
| Number of PPDs Given | 150 | 160 | -10 | -6% | 133 | 17 | 13% | 1085 | 1043 | 42 | 4% |
| Number of PPDs Read | 139 | 120 | 19 | 16% | 122 | 17 | 14% | 910 | 897 | 13 | 1% |
| Number of Positive PPDs | 0 | 0 | 0 | 0% | 1 | -1 | -100% | 1 | 7 | -6 | -86% |
| Total Off-Site Visits | 27 | 26 | 1 | 4% | 42 | -15 | -36% | 158 | 278 | -120 | -43% |
| ER Visits | 1 | 3 | -2 | -67% | 3 | -2 | -67% | 36 | 34 | 2 | 6% |
| Offsite Mental Health Visits | 0 | 0 | 0 | 0% | 0 | 0 | 0% | 0 | 0 | 0 | 0% |
| Specialty Clinic Visits | 26 | 23 | 3 | 13% | 39 | -13 | -33% | 122 | 244 | -122 | -50% |
| 521 HIV Testing | 0 | 0 | 0 | 0% | 0 | 0 | 0% | 0 | 0 | 0 | 0% |
| Number of Positive Pregnancy Tests | 38 | 49 | -11 | -22% | 51 | -13 | -25% | 315 | 491 | -176 | -36% |
| **MRSA | 0 | 0 | 0 | 0% | 1 | -1 | -100% | 0 | 1 | -1 | -100% |
| Less than 30 days | 0 | 0 | 0 | 0% | 1 | -1 | -100% | 0 | 1 | -1 | -100% |
| Greater than 30 days | 0 | 0 | 0 | 0% | 0 | 0 | 0% | 0 | 0 | 0 | 0% |
| MRSA Requiring Isolation | 0 | 0 | 0 | 0% | 1 | -1 | -100% | 0 | 1 | -1 | -100% |
| Total Wounds Cultured | 0 | 0 | 0 | 0% | 1 | -1 | -100% | 0 | 1 | -1 | -100% |
| Total (+) Wound Cultures | 0 | 0 | 0 | 0% | 1 | -1 | -100% | 0 | 1 | -1 | -100% |

Green: decrease Red: increase

* Note: The September 2017 "Health Assessments" and "Health Assessment Completion Ratio" are calculated from August 21st, 2016 book dates through September 20th, 2017 book dates.

** Note: All cases of suspected MRSA are treated, regardless of confirmed diagnosis by culture. These numbers contain both confirmed and suspected cases of MRSA.

Juvenile Detention Services

September-17

| D.A.T. | This Month to Last Month | | | | Same Month Last Year | | | Year to Date (Last Year/This Year) | | | |
|--|--------------------------|--------|-------|--------|----------------------|-------|--------|------------------------------------|------|-------|--------|
| | Sep-17 | Aug-17 | (+/-) | % Chng | Sep-16 | (+/-) | % Chng | 2017 | 2016 | (+/-) | % Chng |
| Average Daily Population | 91 | 82 | 9 | 11% | 61 | 30 | 49% | 86 | 62 | 24 | 39% |
| Number of Youth Admitted | 66 | 71 | -5 | -7% | 64 | 2 | 3% | 626 | 661 | -35 | -5% |
| Number of Youth Released | 66 | 64 | 2 | 3% | 61 | 5 | 8% | 627 | 683 | -56 | -8% |
| Total DATs Completed | 118 | 135 | -17 | -13% | 186 | -68 | -37% | 1364 | 1433 | -69 | -5% |
| Number of Release Eligible DATs | 96 | 101 | -5 | -5% | 144 | -48 | -33% | 1078 | 979 | 99 | 10% |
| Total Number of Overrides | 9 | 20 | -11 | -55% | 14 | -5 | -36% | 114 | 96 | 18 | 19% |
| Danger to Community | 4 | 11 | -7 | -64% | 7 | -3 | -43% | 59 | 52 | 7 | 13% |
| Threat of Bodily Harm | 3 | 4 | -1 | -25% | 4 | -1 | -25% | 33 | 22 | 11 | 50% |
| Parent/Guardian Refused | 1 | 2 | -1 | -50% | 1 | 0 | 0% | 14 | 9 | 5 | 56% |
| Unable to Locate Parent | 1 | 3 | -2 | -67% | 0 | 1 | 0% | 8 | 7 | 1 | 14% |
| Mitigated | 0 | 0 | 0 | 0% | 2 | -2 | -100% | 0 | 6 | -6 | -100% |
| L.E.A.P. | 97 | 134 | -37 | -28% | 170 | -73 | -43% | 1161 | 1054 | 107 | 10% |
| SCSO | 18 | 16 | 2 | 13% | 12 | 6 | 50% | 127 | 95 | 32 | 34% |
| MPD | 78 | 118 | -40 | -34% | 156 | -78 | -50% | 1025 | 944 | 81 | 9% |
| Other Municipalities | 1 | 0 | 1 | 0% | 2 | -1 | -50% | 9 | 15 | -6 | -40% |
| Called & Transported | 20 | 30 | -10 | -33% | 29 | -9 | -31% | 261 | 276 | -15 | -5% |
| No Call & Transported | 45 | 73 | -28 | -38% | 112 | -67 | -60% | 614 | 488 | 126 | 26% |
| Called & Summons Issued | 4 | 4 | 0 | 0% | 12 | -8 | -67% | 28 | 103 | -75 | -73% |
| Mandatory Transports | 27 | 27 | 0 | 0% | 17 | 10 | 59% | 259 | 186 | 73 | 39% |
| Attorney Visits | 0 | 181 | -181 | -100% | 200 | -200 | -100% | 1478 | 1206 | 272 | 23% |
| Use of Force | 2 | 1 | 1 | 100% | 18 | -16 | -89% | 39 | 139 | -100 | -72% |
| Non-Compliant | 2 | 1 | 1 | 100% | 4 | -2 | -50% | 12 | 34 | -22 | -65% |
| Assault on Staff | 0 | 0 | 0 | 0% | 1 | -1 | -100% | 1 | 12 | -11 | -92% |
| Assault on youth by youth | 0 | 0 | 0 | 0% | 13 | -13 | -100% | 25 | 91 | -66 | -73% |
| Crisis - Use of Force | 0 | 0 | 0 | 0% | 0 | 0 | 0% | 1 | 2 | -1 | -50% |
| Mechanical Restraints | 31 | 53 | -22 | -42% | 54 | -23 | -43% | 373 | 175 | 198 | 113% |
| Use of Force | 2 | 0 | 2 | 0% | 1 | 1 | 100% | 9 | 6 | 3 | 50% |
| Transports | 29 | 53 | -24 | -45% | 53 | -24 | -45% | 364 | 169 | 195 | 115% |
| Involuntary Room Confinement | 1 | 0 | 1 | 0% | 12 | -11 | -92% | 21 | 25 | -4 | -16% |
| Total Suicide Crisis / QMHP Calls | 5 | 1 | 4 | 400% | 4 | 1 | 25% | 50 | 50 | 0 | 0% |
| Cleared without Restrictions | 0 | 0 | 0 | 0% | 0 | 0 | 0% | 0 | 0 | 0 | 0% |
| Cleared with Restrictions | 5 | 1 | 4 | 400% | 4 | 1 | 25% | 50 | 50 | 0 | 0% |
| Emergency Drills | 0 | 0 | 0 | 0% | 0 | 0 | 0% | 1 | 0 | 1 | 0% |
| Fire Drills | 6 | 7 | -1 | -14% | 5 | 1 | 20% | 51 | 42 | 9 | 21% |
| Mock Suicide Drills | 4 | 5 | -1 | -20% | 2 | 2 | 100% | 35 | 34 | 1 | 3% |
| Unit Contraband Search | 47 | 44 | 3 | 7% | 28 | 19 | 68% | 333 | 241 | 92 | 38% |

Green: decrease Red: increase

*D.A.T. = Detention Assessment Tool

*L.E.A.P. = Law Enforcement Assessment Program

Juvenile Detention Services

September-17

| Programs | This Month to Last Month | | | | Same Month Last Year | | | Year to Date (Last Year/This Year) | | | |
|------------------------------|--------------------------|--------|-------|--------|----------------------|-------|--------|------------------------------------|-------|-------|--------|
| | Sep-17 | Aug-17 | (+/-) | % Chng | Sep-16 | (+/-) | % Chng | 2017 | 2016 | (+/-) | % Chng |
| Juvenile Participants | 4226 | 5178 | -952 | -18% | 3558 | 668 | 19% | 52081 | 26235 | 25846 | 99% |
| Anger Management | 50 | 116 | -66 | -57% | 11 | 39 | 355% | 449 | 138 | 311 | 225% |
| Real Talk | 137 | 297 | -160 | -54% | 71 | 66 | 93% | 2701 | 740 | 1961 | 265% |
| Life Skills | 143 | 85 | 58 | 68% | 45 | 98 | 218% | 1402 | 662 | 740 | 112% |
| HIV / AIDS Awareness | 6 | 21 | -15 | -71% | 0 | 6 | 0% | 157 | 218 | -61 | -28% |
| Creative Writing | 85 | 65 | 20 | 31% | 20 | 65 | 325% | 873 | 21 | 852 | 4057% |
| Circle Up | 348 | 1301 | -953 | -73% | 1426 | -1078 | -76% | 19469 | 5189 | 14280 | 275% |
| Hope Academy School | 909 | 858 | 51 | 6% | 378 | 531 | 140% | 5637 | 4579 | 1058 | 23% |
| Recreation | 2548 | 2435 | 113 | 5% | 1607 | 941 | 59% | 21393 | 14688 | 6705 | 46% |
| Juvenile Sessions | 428 | 652 | -224 | -34% | 298 | 130 | 44% | 4082 | 2340 | 1742 | 74% |
| Anger Management | 8 | 15 | -7 | -47% | 1 | 7 | 700% | 52 | 35 | 17 | 49% |
| Real Talk | 19 | 42 | -23 | -55% | 6 | 13 | 217% | 247 | 102 | 145 | 142% |
| Life Skills | 20 | 11 | 9 | 82% | 5 | 15 | 300% | 150 | 87 | 63 | 72% |
| HIV / AIDS Awareness | 1 | 3 | -2 | -67% | 0 | 1 | 0% | 16 | 27 | -11 | -41% |
| Creative Writing | 13 | 8 | 5 | 63% | 2 | 11 | 550% | 100 | 3 | 97 | 3233% |
| Circle Up | 44 | 161 | -117 | -73% | 88 | -44 | -50% | 1406 | 385 | 1021 | 265% |
| Hope Academy School | 20 | 119 | -99 | -83% | 21 | -1 | -5% | 234 | 134 | 100 | 75% |
| Recreation | 303 | 293 | 10 | 3% | 175 | 128 | 73% | 1877 | 1567 | 310 | 20% |

| Religious Services | This Month to Last Month | | | | Same Month Last Year | | | Year to Date (Last Year/This Year) | | | |
|---------------------------------------|--------------------------|--------|-------|--------|----------------------|-------|--------|------------------------------------|------|-------|--------|
| | Sep-17 | Aug-17 | (+/-) | % Chng | Sep-16 | (+/-) | % Chng | 2017 | 2016 | (+/-) | % Chng |
| Total Worship Participants | 51 | 88 | -37 | -42% | 92 | -41 | -45% | 592 | 659 | -67 | -10% |
| Chaplain Worship | 13 | 8 | 5 | 63% | 3 | 10 | 333% | 91 | 195 | -104 | -53% |
| Volunteer (Christian, Muslim) Worship | 38 | 80 | -42 | -53% | 89 | -51 | -57% | 501 | 464 | 37 | 8% |
| Total Worship Sessions | 13 | 12 | 1 | 8% | 10 | 3 | 30% | 76 | 84 | -8 | -10% |
| Chaplain Worship | 2 | 2 | 0 | 0% | 1 | 1 | 100% | 20 | 23 | -3 | -13% |
| Volunteer (Christian, Muslim) Worship | 11 | 10 | 1 | 10% | 9 | 2 | 22% | 56 | 61 | -5 | -8% |

Green: decrease Red: increase

Juvenile Court Medical Report

September-17

| Juvenile Court | This Month to Last Month | | | | Same Month Last Year | | | Year to Date (Last Year/This Year) | | | |
|--|--------------------------|--------|-------|--------|----------------------|-------|--------|------------------------------------|------|-------|--------|
| | Sep-17 | Aug-17 | (+/-) | % Chng | Sep-16 | (+/-) | % Chng | 2017 | 2016 | (+/-) | % Chng |
| Health Assessments | 54 | 51 | 3 | 6% | 40 | 14 | 35% | 467 | 328 | 139 | 42% |
| Health Assessment Completion Ratio | 100% | 100% | 0% | 0% | 100% | 0% | 0% | 100% | 100% | 0% | 0% |
| On-Site Emergency Responses | 25 | 32 | -7 | -22% | 2 | 23 | 1150% | 256 | 40 | 216 | 540% |
| Total Sick-Call Completion Ratio | 100% | 100% | 0% | 0% | 100% | 0% | 0% | 100% | 89% | 11% | 12% |
| Total Sick-Call | 123 | 130 | -7 | -5% | 53 | 70 | 132% | 939 | 786 | 153 | 19% |
| Nurse Sick-Call | 102 | 119 | -17 | -14% | 44 | 58 | 132% | 800 | 643 | 157 | 24% |
| Mental Health Sick-Call | 7 | 3 | 4 | 133% | 1 | 6 | 600% | 56 | 84 | -28 | -33% |
| Dental Sick-Call | 14 | 8 | 6 | 75% | 8 | 6 | 75% | 83 | 59 | 24 | 41% |
| Total Visits | 83 | 98 | -15 | -15% | 114 | -31 | -27% | 670 | 945 | -275 | -29% |
| Medical Provider Patient Visits | 31 | 43 | -12 | -28% | 71 | -40 | -56% | 264 | 640 | -376 | -59% |
| Mental Health Provider Patient Visits | 52 | 55 | -3 | -5% | 43 | 9 | 21% | 406 | 305 | 101 | 33% |
| Number of PPDs Given | 68 | 77 | -9 | -12% | 64 | 4 | 6% | 641 | 607 | 34 | 6% |
| Number of PPDs Read | 46 | 52 | -6 | -12% | 32 | 14 | 44% | 424 | 291 | 133 | 46% |
| Number of Positive PPDs | 0 | 0 | 0 | 0% | 0 | 0 | 0% | 1 | 0 | 1 | 0% |
| Total Off-Site Visits | 36 | 42 | -6 | -14% | 19 | 17 | 89% | 273 | 153 | 120 | 78% |
| ER Visits | 1 | 0 | 1 | 0% | 4 | -3 | -75% | 13 | 42 | -29 | -69% |
| Mental Health Hospitalizations | 0 | 0 | 0 | 0% | 0 | 0 | 0% | 0 | 1 | -1 | -100% |
| Offsite Clinic Visits | 35 | 42 | -7 | -17% | 15 | 20 | 133% | 260 | 110 | 150 | 136% |
| Number of Positive Pregnancy Tests | 0 | 2 | -2 | -100% | 0 | 0 | 0% | 8 | 4 | 4 | 100% |
| Suicidal Precaution | 9 | 2 | 7 | 350% | 9 | 0 | 0% | 107 | 103 | 4 | 4% |
| Mental Health Observations | 4 | 1 | 3 | 300% | 4 | 0 | 0% | 47 | 37 | 10 | 27% |
| Close Observations | 0 | 0 | 0 | 0% | 1 | -1 | -100% | 9 | 14 | -5 | -36% |
| Ideations | 2 | 1 | 1 | 100% | 3 | -1 | -33% | 34 | 32 | 2 | 6% |
| Attempts | 0 | 0 | 0 | 0% | 0 | 0 | 0% | 1 | 2 | -1 | -50% |
| Gestures | 3 | 0 | 3 | 0% | 1 | 2 | 200% | 13 | 14 | -1 | -7% |
| Potentially Self-injurious Bx | 0 | 0 | 0 | 0% | 0 | 0 | 0% | 0 | 2 | -2 | -100% |
| Decomposition | 0 | 0 | 0 | 0% | 0 | 0 | 0% | 3 | 2 | 1 | 50% |
| Total Number of Youth on Watch | 5 | 1 | 4 | 400% | 4 | 1 | 25% | 53 | 50 | 3 | 6% |
| Total Number of Watch Days | 14 | 3 | 11 | 367% | 11 | 3 | 27% | 170 | 193 | -23 | -12% |
| Total Receiving Screening / Intakes | 0 | 0 | 0 | 0% | 0 | 0 | 0% | 0 | 200 | -200 | -100% |

Green: decrease Red: increase

* Total Receiving Screening / Intakes started Feb16

The End



Disclaimer:

This report does not represent or guarantee that the information is accurate, complete or current. Neither the Jail Report Card nor its creator shall be liable for any damages arising out of or in connection with the use of this report.