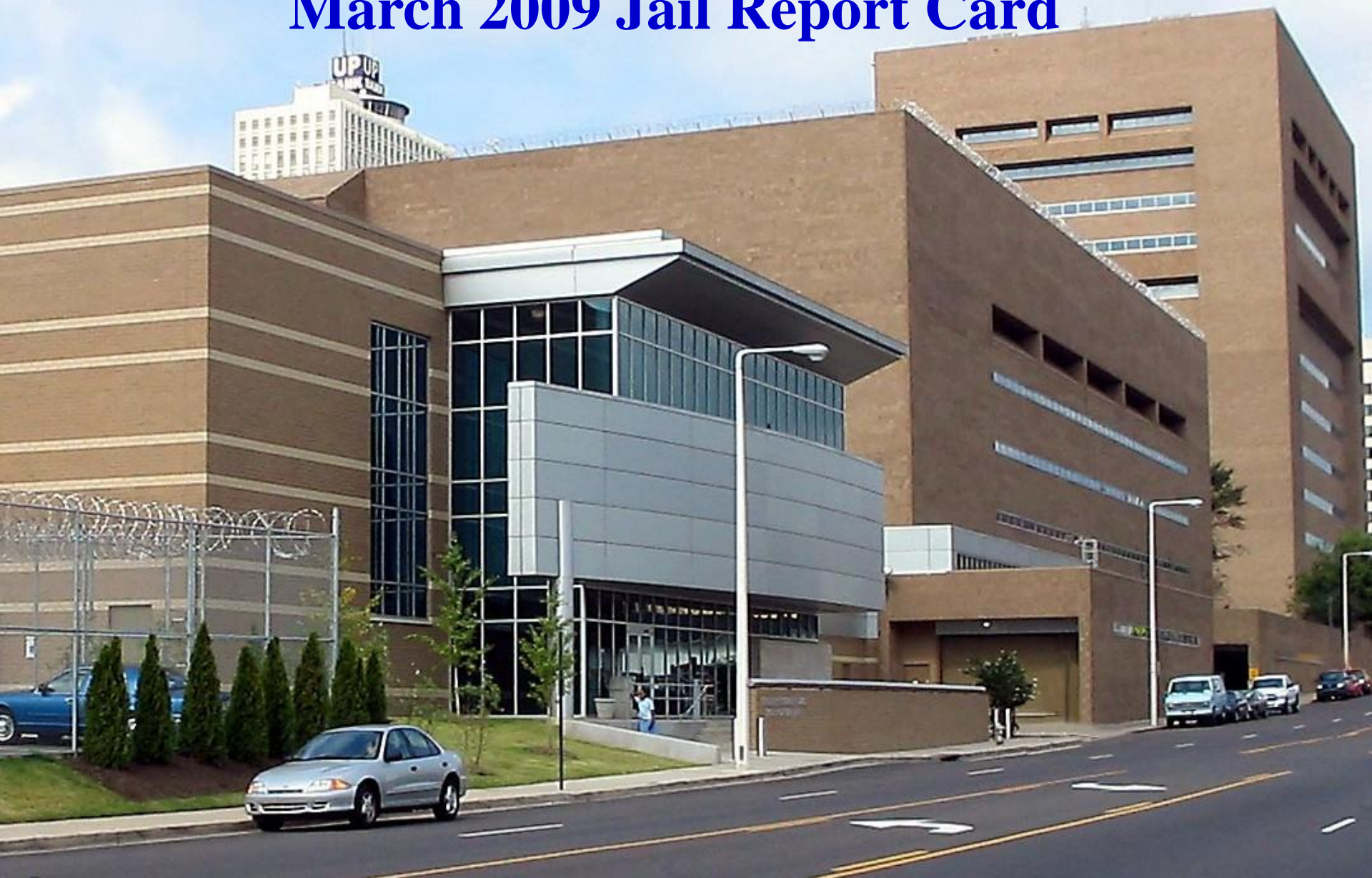


Shelby County Sheriff's Office

March 2009 Jail Report Card



Jail Population Report

March-09

Jail Population Stats	This Month to Last Month				Same Month Last Year			Year to Date (Last Year/This Year)			
	Mar-09	Feb-09	(+/-)	% Chng	Mar-08	(+/-)	% Chng	2009	2008	(+/-)	% Chng
Average Daily Population ¹	2605	2615	-10	0%	2457	148	6%	2637	2488	150	6%
Male	2387	2410	-23	-1%	2249	138	6%	2425	2287	138	6%
Female	218	205	13	6%	208	10	5%	212	200	12	6%
201 Poplar	2337	2365	-28	-1%	2204	133	6%	2376	2237	139	6%
Jail East	267	250	17	7%	253	14	6%	261	244	17	7%
Total Bookings (No Quick Books)	4619	4125	494	12%	3672	947	26%	12885	10833	2052	19%
201 Poplar	3681	3259	422	13%	2856	825	29%	10242	8624	1618	19%
Jail East	938	866	72	8%	816	122	15%	2643	2209	434	20%
No Prior Incarcerations ²	655	647	8	1%	573	82	14%	1991	1609	382	24%
Recidivist Inmates ²	3964	3478	486	14%	3099	865	28%	10894	9224	1670	18%
Quick Bookings	722	632	90	14%	526	196	37%	1991	1844	147	8%
Total Number Released (No Quick Releases)	4440	4265	175	4%	3571	869	24%	12747	10843	1904	18%
201 Poplar	3508	3393	115	3%	2794	714	26%	10104	8673	1431	16%
Jail East	932	872	60	7%	777	155	20%	2643	2170	473	22%
Average Length of Stay	15.1	15.4	-0.2	-2%	18.1	-3.0	-16%	16.0	17.8	-1.9	-11%
Male (days)	17.4	17.9	-0.5	-3%	21.3	-3.9	-18%	18.5	20.6	-2.1	-10%
Female (days)	6.2	5.8	0.4	7%	7.0	-0.8	-11%	6.3	7.1	-0.8	-11%
Released Inmates - Over 72 Hours in Jail	34%	35%	0.0	-3%	36%	0.0	-6%	35%	39%	0.0	-9%
Males	36%	38%	0.0	-5%	40%	0.0	-9%	38%	42%	0.0	-9%
Females	26%	22%	0.0	18%	25%	0.0	5%	24%	27%	0.0	-13%
Released Inmates - Length of Stay (Over 72 Hours)	52	60	-8.0	-13%	53	-1.1	-2%	56	54	2.5	5%
Males	58	64	-6.0	-9%	56	2.0	4%	61	57	3.3	6%
Females	25	36	-11.0	-31%	36	-11.0	-31%	33	32	0.9	3%
201 - Avg. Booking Process Time	4.35	4.00	0.35	9%	3.17	1.18	37%	4.2	4.1	0.1	2%
JE - Avg. Booking Process Time	1.83	1.72	0.11	6%	1.49	0.34	23%	1.6	1.6	0.1	6%
Misdemeanor Citations Issued	3493	3132	361	12%	1886	1607	85%	9711	6247	3464	55%
Legal Status	2547	2620	-73	-3%	2439	108	4%	7818	7372	446	6%
Pre-trial	2311	2372	-61	-3%	2169	142	7%	7117	6639	478	7%
Sentenced	107	108	-1	-1%	130	-23	-18%	296	334	-38	-11%
Hold	129	140	-11	-8%	140	-11	-8%	405	399	6	2%
Remanded Juveniles	19	23	-4	-17%	9	10	111%	67	28	39	139%
Male	16	20	-4	-20%	8	8	100%	60	27	33	122%
Female	3	3	0	0%	1	2	200%	7	1	6	600%
Avg. No Prior Incarcerations ³	432	443	-11	-2%	441	-9	-2%	437	425	13	3%
Avg. Recidivist Inmates ³	2179	2229	-50	-2%	2070	109	5%	2214	2091	123	6%
1 to 2 Prior Incarcerations	432	440	-8	-2%	372	60	16%	442	373	69	18%
3rd Prior Incarceration	138	153	-15	-10%	137	1	1%	152	141	11	8%
4 to 5 Prior Incarcerations	225	255	-30	-12%	207	18	9%	244	217	27	12%
6 or More Prior Incarcerations	1384	1381	3	0%	1354	30	2%	1376	1360	16	1%

Green: decrease Red: increase

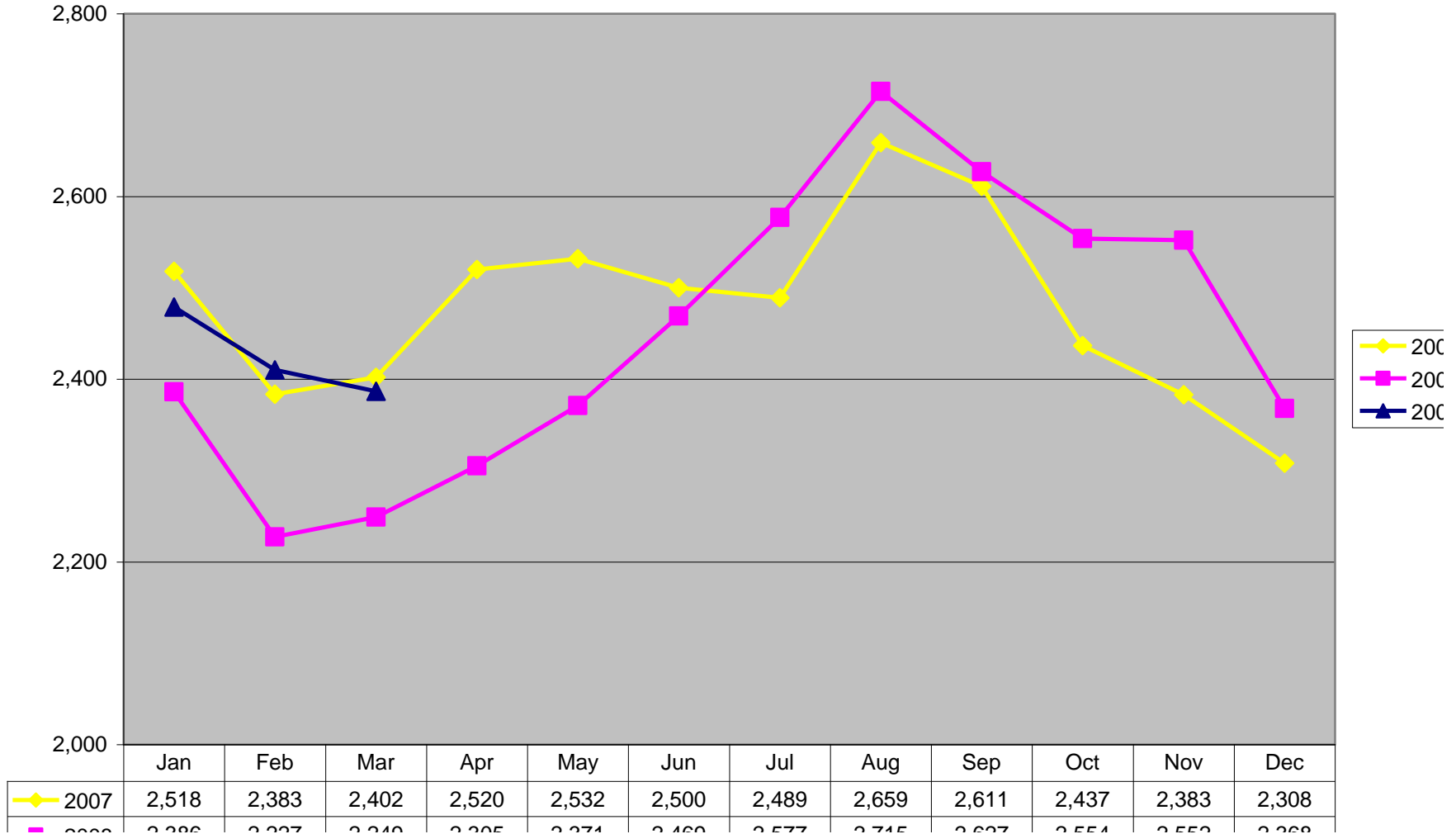
1 Average Daily Population does not include inmates in PW/ER/MMHI.

2 Numbers are based on Total Bookings.

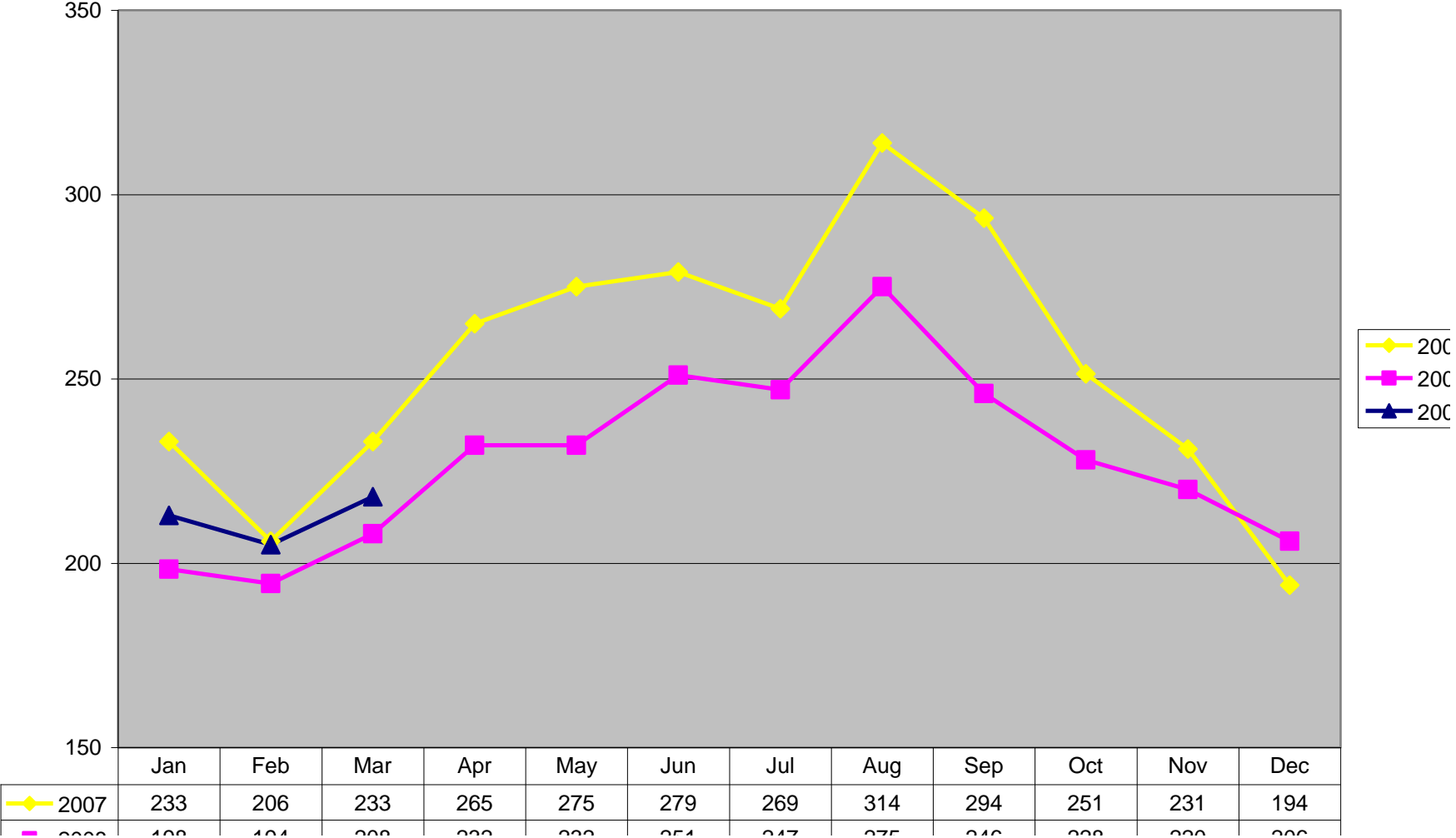
3 Numbers are based on Average Daily Population.

Released inmates over 72 hrs and length of stay replaced median length starting May 08

Average Daily Population - Males



Average Daily Population - Females



Jail Court Report

March-09

Jail Court Stats	This Month to Last Month				Same Month Last Year			Year to Date (Last Year/This Year)			
	Mar-09	Feb-09	(+/-)	% Chng	Mar-08	(+/-)	% Chng	2009	2008	(+/-)	% Chng
Inmates in Gen. Sessions Cases Pending	721	782	-61	-8%	596	125	21%	2344	1906	438	23%
Less than One Month	523	524	-1	0%	428	95	22%	1563	1353	210	16%
One to Five Months	178	233	-55	-24%	152	26	17%	711	513	198	39%
Six to Eleven Months	12	14	-2	-14%	10	2	20%	40	27	13	48%
One Year or Greater	8	11	-3	-27%	6	2	33%	30	13	17	131%
Inmates in Gen. Sessions Pending by Offense	721	782	-61	-8%	596	125	21%	2344	1906	438	23%
Felony	511	576	-65	-11%	414	97	23%	1706	1332	374	28%
Misdemeanor	210	206	4	2%	182	28	15%	638	574	64	11%
Inmates in Criminal Court Cases Pending	925	922	3	0%	949	-24	-3%	2802	2780	22	1%
Less than One Month	86	89	-3	-3%	93	-7	-8%	238	242	-4	-2%
One to Five Months	259	243	16	7%	294	-35	-12%	781	872	-91	-10%
Six to Eleven Months	313	311	2	1%	301	12	4%	944	898	46	5%
One to Two Years	254	266	-12	-5%	242	12	5%	801	712	89	13%
Three Years or Greater	13	13	0	0%	19	-6	-32%	38	56	-18	-32%
Inmates in Criminal Court Pending by Offense	925	922	3	0%	949	-24	-3%	2802	2780	22	1%
Felony	911	908	3	0%	935	-24	-3%	2764	2745	19	1%
Misdemeanor	14	14	0	0%	14	0	0%	38	35	3	9%
HTS Not Indicted (current incar.)	337	327	10	3%	307	30	10%	1006	945	61	6%
Less than Six Months	318	308	10	3%	284	34	12%	950	881	69	8%
Six to Eleven Months	19	19	0	0%	20	-1	-5%	55	56	-1	-2%
One Year or Greater	0	0	0	0%	3	-3	-100%	1	8	-7	-88%
Booked One or More Drug Charges	614	564	50	9%	435	179	41%	1690	1346	344	26%
Male	534	498	36	7%	369	165	45%	1476	1165	311	27%
Female	80	66	14	21%	66	14	21%	214	181	33	18%

Green: decrease Red: increase

HTS (Held-to-State)

ROR (Release on Recognizance)

Jail Security Operations Report

March-09

Jail Sec Ops Stats	This Month to Last Month				Same Month Last Year			Year to Date (Last Year/This Year)			
	Mar-09	Feb-09	(+/-)	% Chng	Mar-08	(+/-)	% Chng	2009	2008	(+/-)	% Chng
Total 30 day Entire Area Shakedowns	158	127	31	24%	126	32	25%	440	355	85	24%
Scheduled Shakedowns	101	95	6	6%	101	0	0%	296	290	6	2%
(Repeat) Scheduled & Unscheduled Shkdw	57	32	25	78%	25	32	128%	144	65	79	122%
Serious Violent Incidents	1	0	1	0%	2	-1	-50%	1	5	-4	-80%
Use of Force	35	42	-7	-17%	24	11	46%	120	92	28	30%
Planned	6	6	0	0%	1	5	500%	17	5	12	240%
Unplanned	29	36	-7	-19%	23	6	26%	103	87	16	18%
Chemical	23	32	-9	-28%	29	-6	-21%	87	61	26	43%
Restraint Chair (Security)	2	2	0	0%	0	2	0%	6	0	6	0%
4 Point Bed Restraints (Medical)	0	0	0	0%	0	0	0%	0	0	0	0%
Fire Drills	8	6	2	33%	6	2	33%	21	18	3	17%
Fire Drill Deficiencies	2	0	2	0%	1	1	100%	3	1	2	200%

Jail Transportation Stats	This Month to Last Month				Same Month Last Year			Year to Date (Last Year/This Year)			
	Mar-09	Feb-09	(+/-)	% Chng	Mar-08	(+/-)	% Chng	2009	2008	(+/-)	% Chng
Total Transportation Trips	633	508	125	25%	535	98	18%	1,732	1,726	6	0%
Within County Trips	620	498	122	24%	523	97	19%	1,700	1,685	15	1%
Out of County Trips	13	10	3	30%	12	1	8%	32	41	-9	-22%

Green: decrease Red: increase

Jail Contraband Report

March-09

Jail Contraband	This Month to Last Month				Same Month Last Year			Year to Date (Last Year/This Year)			
	Mar-09	Feb-09	(+/-)	% Chng	Mar-08	(+/-)	% Chng	2009	2008	(+/-)	% Chng
201 Poplar	34	35	-1	-3%	37	-3	-8%	97	98	-1	-1%
Tobacco	2	8	-6	-75%	3	-1	-33%	16	15	1	7%
Marijuana	3	0	3	0%	2	1	50%	5	7	-2	-29%
Crack/Cocaine	0	0	0	0%	1	-1	-100%	1	2	-1	-50%
Prescribed Meds	4	3	1	33%	2	2	100%	10	6	4	67%
Weapons	4	3	1	33%	3	1	33%	9	5	4	80%
Money	1	1	0	0%	2	-1	-50%	4	3	1	33%
Other	20	20	0	0%	24	-4	-17%	52	60	-8	-13%
Contraband by Shift	34	35	-1	-3%	37	-3	-8%	97	98	-1	-1%
6 - 2 Shift	20	18	2	11%	17	3	18%	47	41	6	15%
2-10 Shift	13	15	-2	-13%	17	-4	-24%	44	45	-1	-2%
10 - 6 Shift	1	2	-1	-50%	3	-2	-67%	6	12	-6	-50%
Contraband by Floor	34	35	-1	-3%	37	-3	-8%	97	98	-1	-1%
6th Floor	0	1	-1	-100%	5	-5	-100%	1	5	-4	-80%
5th Floor	1	1	0	0%	2	-1	-50%	3	3	0	0%
4th Floor	13	10	3	30%	15	-2	-13%	30	36	-6	-17%
3rd Floor	4	2	2	100%	3	1	33%	10	20	-10	-50%
2nd Floor	3	11	-8	-73%	6	-3	-50%	18	12	6	50%
1st Floor Admin Seg	1	2	-1	-50%	1	0	0%	5	4	1	25%
JM Housing - Juveniles	1	0	1	0%	0	1	0%	1	0	1	0%
Lower Level North - Juveniles	0	2	-2	-100%	0	0	0%	2	0	2	0%
Lower Level	3	5	-2	-40%	1	2	200%	12	9	3	33%
Tunnel	0	0	0	0%	1	-1	-100%	1	2	-1	-50%
Annex	6	1	5	500%	3	3	100%	11	6	5	83%
Intake	2	0	2	0%	0	2	0%	3	1	2	200%

Green: decrease Red: increase

JM Housing - Juveniles started Mar 09

Lower Level North - Juveniles started Mar 09

Jail Human Resource Report

March-09

Jail Human Resource	This Month to Last Month				Same Month Last Year			Year to Date (Last Year/This Year)			
	Mar-09	Feb-09	(+/-)	% Chng	Mar-08	(+/-)	% Chng	2009	2008	(+/-)	% Chng
Daily Avg Employees on Sick Leave	60	65	-5	-8%	64	-4	-6%	63	196	-133	-68%
Daily Avg Regular Sick Leave	21	25	-4	-16%	22	-1	-5%	24	73	-49	-68%
Security Staff	19	21	-2	-10%	20	-1	-5%	20	64	-44	-68%
Support Staff	2	4	-2	-50%	2	0	0%	3	9	-6	-63%
Daily Avg Extended Sick Leave	39	40	-1	-3%	42	-3	-7%	39	123	-84	-68%
Extended Sick Leave	6	8	-2	-25%	12	-6	-50%	7	38	-31	-81%
FMLA	29	29	0	0%	26	3	12%	28	72	-44	-61%
OJI	4	3	1	33%	2	2	100%	3	9	-6	-63%
Maternity	0	0	0	0%	2	-2	-100%	0	4	-4	-100%
Disability	0	0	0	0%	0	0	0%	0	0	0	0%
Total Over Time (Hours)	8840	12448	-3608	-29%	1150	7690	669%	30077	5153	24924	484%
Total Dismissed Cases	37	13	24	185%	36	1	3%	100	75	25	33%
Attendance Disciplinary	9	24	-15	-63%	16	-7	-44%	35	88	-53	-60%
Total Major and Minor Infractions	27	15	12	80%	10	17	170%	114	50	64	128%
6 - 2 Shift	12	3	9	300%	7	5	71%	45	29	16	55%
2 - 10 Shift	10	7	3	43%	2	8	400%	43	11	32	291%
10 - 6 Shift	5	3	2	67%	1	4	400%	18	6	12	200%
Jail East	0	2	-2	-100%	0	0	0%	8	4	4	100%
Informal Tardiness Violations	52	16	36	225%	63	-11	-17%	94	227	-133	-59%
6 - 2 Shift	35	9	26	289%	51	-16	-31%	48	178	-130	-73%
2 - 10 Shift	5	5	0	0%	1	4	400%	11	12	-1	-8%
10 - 6 Shift	6	0	6	0%	11	-5	-45%	26	27	-1	-4%
Jail East	6	2	4	200%	0	6	0%	9	10	-1	-10%
Employee Disciplinary Infractions	48	47	1	2%	23	25	109%	279	103	176	171%
Disciplinary Violation Type	59	56	3	5%	24	35	146%	187	108	79	73%
*Force	0	1	-1	-100%	0	0	0%	2	0	2	0%
Attendance	23	5	18	360%	15	8	53%	28	75	-47	-63%
Conduct	21	39	-18	-46%	3	18	600%	104	22	82	373%
Performance	15	11	4	36%	6	9	150%	53	11	42	382%
Total Drug Tests	76	0	76	0%	92	-16	-17%	332	246	86	35%
Pass	76	163	-87	-53%	92	-16	-17%	332	244	88	36%
Fail/Resign	0	0	0	0%	0	0	0%	0	2	-2	-100%

Green: decrease Red: increase

Jail Medical Report - 201 Poplar

March-09

Jail Medical Stats - 201	This Month to Last Month				Same Month Last Year			Year to Date (Last Year/This Year)			
	Mar-09	Feb-09	(+/-)	% Chng	Mar-08	(+/-)	% Chng	2009	2008	(+/-)	% Chng
14 Day Assessments	709	616	93	15%	685	24	4%	1949	2220	-271	-12%
Treatments	923	758	165	22%	1070	-147	-14%	2498	1795	703	39%
Total Sick-Call	1909	1536	373	24%	1579	330	21%	5014	5231	-217	-4%
MD Sick-Call	575	332	243	73%	518	57	11%	1226	1790	-564	-32%
PA Sick-Call	262	211	51	24%	124	138	111%	688	510	178	35%
Nurse Sick-Call	1072	993	79	8%	937	135	14%	3100	2931	169	6%
Total Visits	1358	1488	-130	-9%	1420	-62	-4%	4392	4145	247	6%
Walk-In Visits	748	852	-104	-12%	709	39	6%	2475	2021	454	22%
Dental Visits	192	276	-84	-30%	328	-136	-41%	789	967	-178	-18%
Psychiatric Visits	418	360	58	16%	383	35	9%	1128	1157	-29	-3%
Diabetic Insuline Injections	3111	2340	771	33%	2961	150	5%	7808	8876	-1068	-12%
Number of PPDs Given	3206	2944	262	9%	2411	795	33%	8658	6909	1749	25%
Number of PPDs Read	1494	1193	301	25%	1144	350	31%	3919	3478	441	13%
Number of Positive PPDs	46	55	-9	-16%	42	4	10%	122	119	3	3%
Inmates on TB Meds (daily avg)	44	26	18	69%	53	-9	-17%	35	65	-30	-46%
Inmates on HIV Meds (daily avg)	13	10	3	30%	8	5	63%	11	11	0	3%
Clinic Appointments	142	126	16	13%	77	65	84%	329	285	44	15%
Treated at Clinic	122	104	18	17%	64	58	91%	272	229	43	19%
Not Treated at Clinic	20	22	-2	-9%	13	7	54%	57	56	1	2%
Total Referrals	39	59	-20	-34%	48	-9	-19%	154	156	-2	-1%
ER Referrals	38	54	-16	-30%	48	-10	-21%	143	154	-11	-7%
Offsite Mental Health Referrals	1	5	-4	-80%	0	1	0%	11	2	9	450%
MRSA	29	36	-7	-19%	22	7	32%	96	108	-12	-11%
Less than 30 days	10	13	-3	-23%	8	2	25%	35	53	-18	-34%
Greater than 30 days	19	23	-4	-17%	14	5	36%	61	55	6	11%
MRSA Requiring Isolation	2	0	2	0%	12	-10	-83%	3	14	-11	-79%
Total Wounds Cultured	9	10	-1	-10%	10	-1	-10%	27	32	-5	-16%
Total (+) Wound Cultures	8	5	3	60%	2	6	300%	19	12	7	58%

Green: decrease Red: increase

MRSA Requiring Isolation started Feb 2008

Total Wounds Cultured started Feb 2008

Total (+) Wound Cultures started Feb 2008

Jail Maintenance Report

March-09

Jail Maintenance Stats	This Month to Last Month				Same Month Last Year			Year to Date (Last Year/This Year)			
	Mar-09	Feb-09	(+/-)	% Chng	Mar-08	(+/-)	% Chng	2009	2008	(+/-)	% Chng
Work Orders Submitted	2055	1593	462	29%	1761	294	17%	5415	4957	458	9%
Completed Work Orders	2042	1586	456	29%	1727	315	18%	5389	4851	538	11%
Pending	13	7	6	86%	34	-21	-62%	26	106	-80	-75%
Repeat Work Orders	70	45	25	56%	245	-175	-71%	175	561	-386	-69%
No Problem Found	41	27	14	52%	35	6	17%	99	150	-51	-34%
Not Respond by Following Day	0	0	0	0%	0	0	0%	0	0	0	0%

Green: decrease Red: increase

Environmental Report

March-09

Environmental Stats	This Month to Last Month				Same Month Last Year			Year to Date (Last Year/This Year)			
	Mar-09	Feb-09	(+/-)	% Chng	Mar-08	(+/-)	% Chng	2009	2008	(+/-)	% Chng
Kitchen Inspections	40	32	8	25%	42	-2	-5%	116	98	18	18%
6-2 Shift	21	17	4	24%	21	0	0%	60	55	5	9%
10-6 Shift	19	15	4	27%	21	-2	-10%	56	43	13	30%
Kitchen Inspection Deficiencies	258	186	72	39%	585	-327	-56%	734	2226	-1492	-67%
Kitchen Reinspection Deficiencies	142	88	54	61%	368	-226	-61%	339	681	-342	-50%
Floor Inspections - Deficiencies	207	176	31	18%	110	97	88%	583	415	168	40%
6th Floor	4	4	0	0%	4	0	0%	13	7	6	86%
5th Floor	9	4	5	125%	4	5	125%	19	8	11	138%
4th Floor	32	48	-16	-33%	25	7	28%	129	101	28	28%
3rd Floor	41	21	20	95%	20	21	105%	94	58	36	62%
2nd Floor	27	26	1	4%	14	13	93%	84	87	-3	-3%
1st Floor Admin. Seg.	19	16	3	19%	11	8	73%	55	47	8	17%
Intake & Release	21	7	14	200%	18	3	17%	36	50	-14	-28%
Lower Level South	18	24	-6	-25%	0	18	0%	59	22	37	168%
Lower Level North	11	11	0	0%	0	11	0%	34	0	34	0%
Annex	7	8	-1	-13%	11	-4	-36%	24	31	-7	-23%
Jail East	18	7	11	157%	3	15	500%	36	4	32	800%
Repeat Deficiencies	82	95	-13	-14%	40	42	105%	289	164	125	76%
6th Floor	0	2	-2	-100%	3	-3	-100%	3	3	0	0%
5th Floor	2	2	0	0%	0	2	0%	4	2	2	100%
4th Floor	13	21	-8	-38%	9	4	44%	64	45	19	42%
3rd Floor	10	15	-5	-33%	6	4	67%	43	19	24	126%
2nd Floor	12	15	-3	-20%	0	12	0%	48	24	24	100%
1st Floor Admin. Seg.	14	12	2	17%	9	5	56%	38	26	12	46%
Intake & Release	5	5	0	0%	9	-4	-44%	14	26	-12	-46%
Lower Level South	11	13	-2	-15%	0	11	0%	39	4	35	875%
Lower Level North	5	7	-2	-29%	0	5	0%	23	0	23	0%
Annex	10	3	7	233%	3	7	233%	13	14	-1	-7%
Jail East	0	0	0	0%	1	-1	-100%	0	1	-1	-100%

Green: decrease Red: increase

Jail Operations Report

March-09

Jail Training Stats	This Month to Last Month				Same Month Last Year			Year to Date (Last Year/This Year)			
	Mar-09	Feb-09	(+/-)	% Chng	Mar-08	(+/-)	% Chng	2009	2008	(+/-)	% Chng
Total Number of Staffs Trained	170	162	8	5%	149	21	14%	463	556	-93	-17%
Orientation	4	3	1	33%	8	-4	-50%	7	31	-24	-77%
In Service	112	105	7	7%	109	3	3%	217	181	36	20%
FTO/In House	12	5	7	140%	32	-20	-63%	100	184	-84	-46%
Specialized Training	23	37	-14	-38%	0	23	0%	90	119	-29	-24%
Conferences	2	0	2	0%	0	2	0%	5	0	5	0%
Tours	17	12	5	42%	0	17	0%	44	41	3	7%

Jail Food Services Stats	This Month to Last Month				Same Month Last Year			Year to Date (Last Year/This Year)			
	Mar-09	Feb-09	(+/-)	% Chng	Mar-08	(+/-)	% Chng	2009	2008	(+/-)	% Chng
Total Meals Served	271,986	247,580	24,406	10%	255,560	16,426	6%	799,304	766,932	32,372	4%
Inmates Meals	215,527	194,669	20,858	11%	216,058	-531	0%	634,238	651,439	-17,201	-3%
Employee Meals	11,689	10,167	1,522	15%	11,078	611	6%	32,756	32,740	16	0%
Jail East Inmate Meals	24,183	24,337	-154	-1%	23,618	565	2%	73,157	67,702	5,455	8%
Jail East Employee Meals	4,805	4,340	465	11%	4,806	-1	0%	13,950	15,051	-1,101	-7%
Sack Lunches	15,782	14,067	1,715	12%	0	15,782	0%	45,203	0	45,203	0%

Jail Fiduciary Stats	This Month to Last Month				Same Month Last Year			Year to Date (Last Year/This Year)			
	Mar-09	Feb-09	(+/-)	% Chng	Mar-08	(+/-)	% Chng	2009	2008	(+/-)	% Chng
201 Poplar Dress Out	3218	2879	339	12%	2638	580	22%	9051	7709	1342	17%
Jail East Dress Out	692	593	99	17%	675	17	3%	1994	1605	389	24%
Property Damage Charged	\$0	\$0	0	0%	\$2	-2	-100%	\$5	\$248	-243	-98%
Property Damage Collected	\$21	\$0	21	0%	\$2	19	966%	\$26	\$2	24	1183%
Medical Activity Charged	\$4,023	\$3,030	993	33%	\$3,744	279	7%	\$10,131	\$9,564	567	6%
Medical Activity Collected	\$3,204	\$2,647	556	21%	\$3,304	-100	-3%	\$8,979	\$8,348	630	8%

Green: decrease Red: increase

Sack Lunches Sept 08

PERSONNEL - JAIL DIVISION

	TO DATE (JULY-MAR.) ACTIVITY	REMAINING BALANCE	% USED	% BAL
ANNUAL BUDGET				
65,724,540	47,883,400	17,841,140	73%	27%

PLAN VS ACTUAL (9 OF 12 PERIODS REPORTING)

PLAN 9/12	ACTUAL 9/12	VARIANCE TO DATE	(+) OR (-)
\$49,293,405	\$47,883,400	\$1,410,005	3%

O & M - JAIL DIVISION

	TO DATE (JULY-MAR.) ACTIVITY	REMAINING BALANCE	% USED	% BAL
TOTAL BUDGET				
\$10,556,215	\$6,751,726	\$3,804,489	64%	36%
TOTAL OBLIGATED	\$9,404,570	\$1,151,645	89%	11%

PLAN VS ACTUAL (9 OF 12 PERIODS REPORTING)

PLAN 9/12	ACTUAL 9/12	VARIANCE TO DATE	(+) OR (-)
7,917,161	6,751,726	1,165,435	15%

TOTAL - JAIL DIVISION

	TO DATE (JULY-MAR.) ACTIVITY	REMAINING BALANCE	% USED	% BAL
TOTAL BUDGET				
\$76,280,755	\$54,635,126	\$21,645,629	72%	28%

PLAN VS ACTUAL (9 OF 12 PERIODS REPORTING)

PLAN 9/12	ACTUAL 9/12	VARIANCE TO DATE	(+) OR (-)
57,210,566	54,635,126	2,575,440	5%

Jail Classifications Report

March-09

Male Jail Classifications Stats	This Month to Last Month				Same Month Last Year			Year to Date (Last Year/This Year)			
	Mar-09	Feb-09	(+/-)	% Chng	Mar-08	(+/-)	% Chng	2009	2008	(+/-)	% Chng
Total Primary Classifications	4152	3846	306	8%	2674	1478	55%	11876	5426	6450	119%
Primary Classification 201 Poplar	3347	3056	291	10%	2674	673	25%	9537	5426	4111	76%
Maximum Security Level	164	144	20	14%	137	27	20%	465	289	176	61%
9-High	9	12	-3	-25%	7	2	29%	34	13	21	162%
8-Close	155	132	23	17%	130	25	19%	431	276	155	56%
Medium Security Level	1887	1692	195	12%	1682	205	12%	5274	3449	1825	53%
7-Medium High	931	880	51	6%	811	120	15%	2676	1645	1031	63%
6-Medium	569	509	60	12%	458	111	24%	1563	956	607	63%
5-Low Medium	387	303	84	28%	413	-26	-6%	1035	848	187	22%
Minimum Security Level	1296	1220	76	6%	1497	-201	-13%	3798	2906	892	31%
4-Minimum Pre-Sentence	1269	1185	84	7%	1473	-204	-14%	3703	2846	857	30%
3-Minimum	0	1	-1	-100%	1	-1	-100%	1	1	0	0%
2-Low	6	9	-3	-33%	7	-1	-14%	24	19	5	26%
1-Very Low	21	25	-4	-16%	16	5	31%	70	40	30	75%
Avg Male Inmates In PC	6	6	0	0%	12	-6	-50%	8	24	-16	-68%
Female Jail Classifications Stats	This Month to Last Month				Same Month Last Year			Year to Date (Last Year/This Year)			
	Mar-09	Feb-09	(+/-)	% Chng	Mar-08	(+/-)	% Chng	2009	2008	(+/-)	% Chng
Primary Classification Jail East	805	790	15	2%	0	805	0%	2339	0	2339	0%
Maximum Security Level	4	3	1	33%	0	4	0%	12	0	12	0%
9-High	0	0	0	0%	0	0	0%	0	0	0	0%
8-Close	4	3	1	33%	0	4	0%	12	0	12	0%
Medium Security Level	323	334	-11	-3%	0	323	0%	947	0	947	0%
7-Medium High	82	94	-12	-13%	0	82	0%	249	0	249	0%
6-Medium	148	139	9	6%	0	148	0%	412	0	412	0%
5-Low Medium	93	101	-8	-8%	0	93	0%	286	0	286	0%
Minimum Security Level	478	453	25	6%	0	478	0%	1380	0	1380	0%
4-Minimum Pre-Sentence	478	453	25	6%	0	478	0%	1379	0	1379	0%
3-Minimum	0	0	0	0%	0	0	0%	0	0	0	0%
2-Low	0	0	0	0%	0	0	0%	1	0	1	0%
1-Very Low	0	0	0	0%	0	0	0%	0	0	0	0%
Avg Female Inmates In PC	0	0	0	0%	1	-1	-100%	0	2	-2	-100%
Total Classification Reviews	625	551	74	13%	444	181	41%	1770	1054	716	68%
Overrides	42	42	0	0%	44	-2	-5%	133	82	51	62%
AVG Primary Classifications per Day	134	137	-3	-2%	107	27	25%	132	214	-82	-38%
AVG Classification Reviews per Day	20	20	0	0%	14	6	43%	20	34	-14	-42%

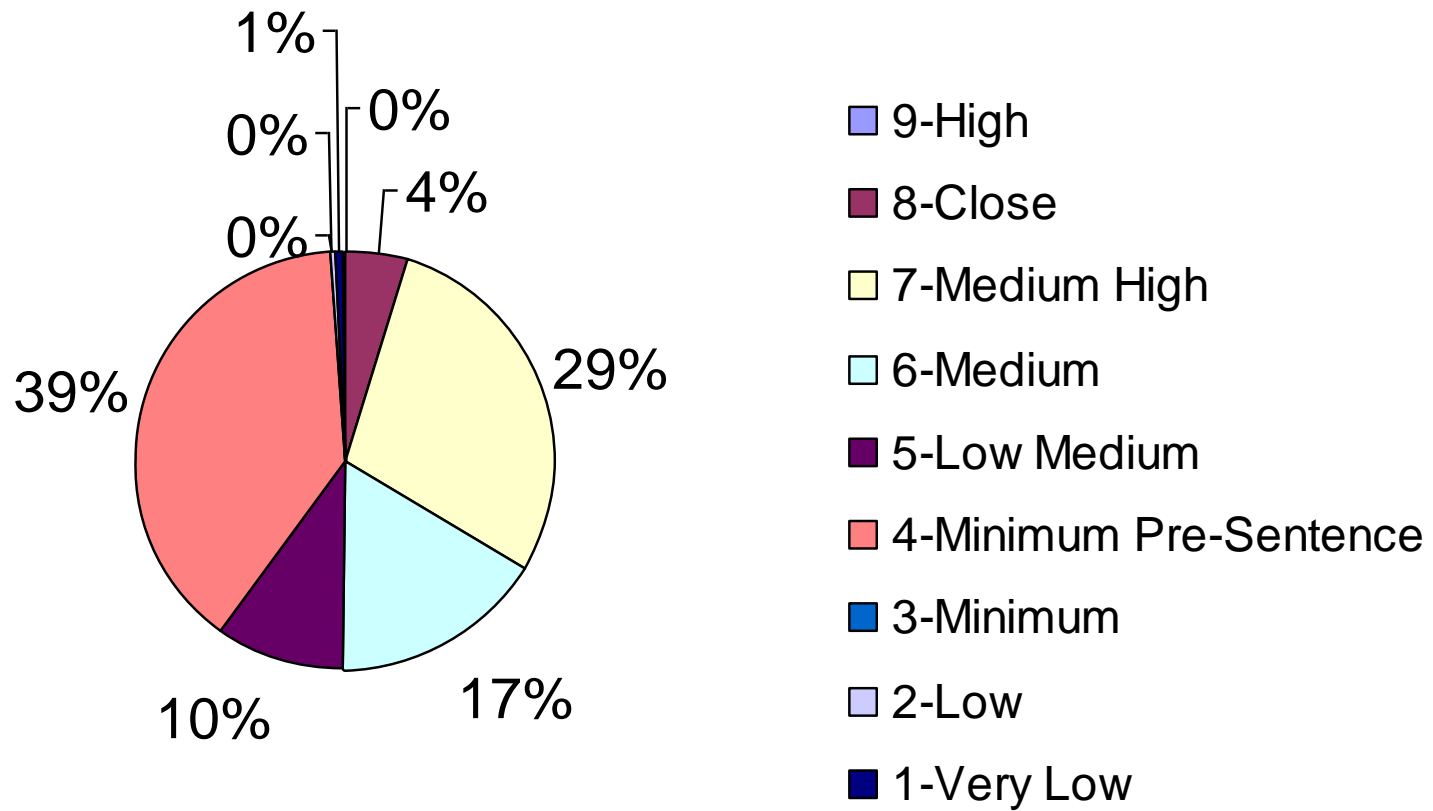
Incidents	This Month to Last Month				Same Month Last Year			Year to Date (Last Year/This Year)			
	Mar-09	Feb-09	(+/-)	% Chng	Mar-08	(+/-)	% Chng	2009	2008	(+/-)	% Chng
Lower Level South/Intake	21	20	1	5%	8	13	163%	64	33	31	94%
Assaultive	0	1	-1	-100%	1	-1	-100%	3	5	-2	-40%
Non- Assaultive	17	14	3	21%	7	10	143%	47	23	24	104%
Contraband	4	5	-1	-20%	0	4	0%	14	5	9	180%

Green: decrease Red: increase

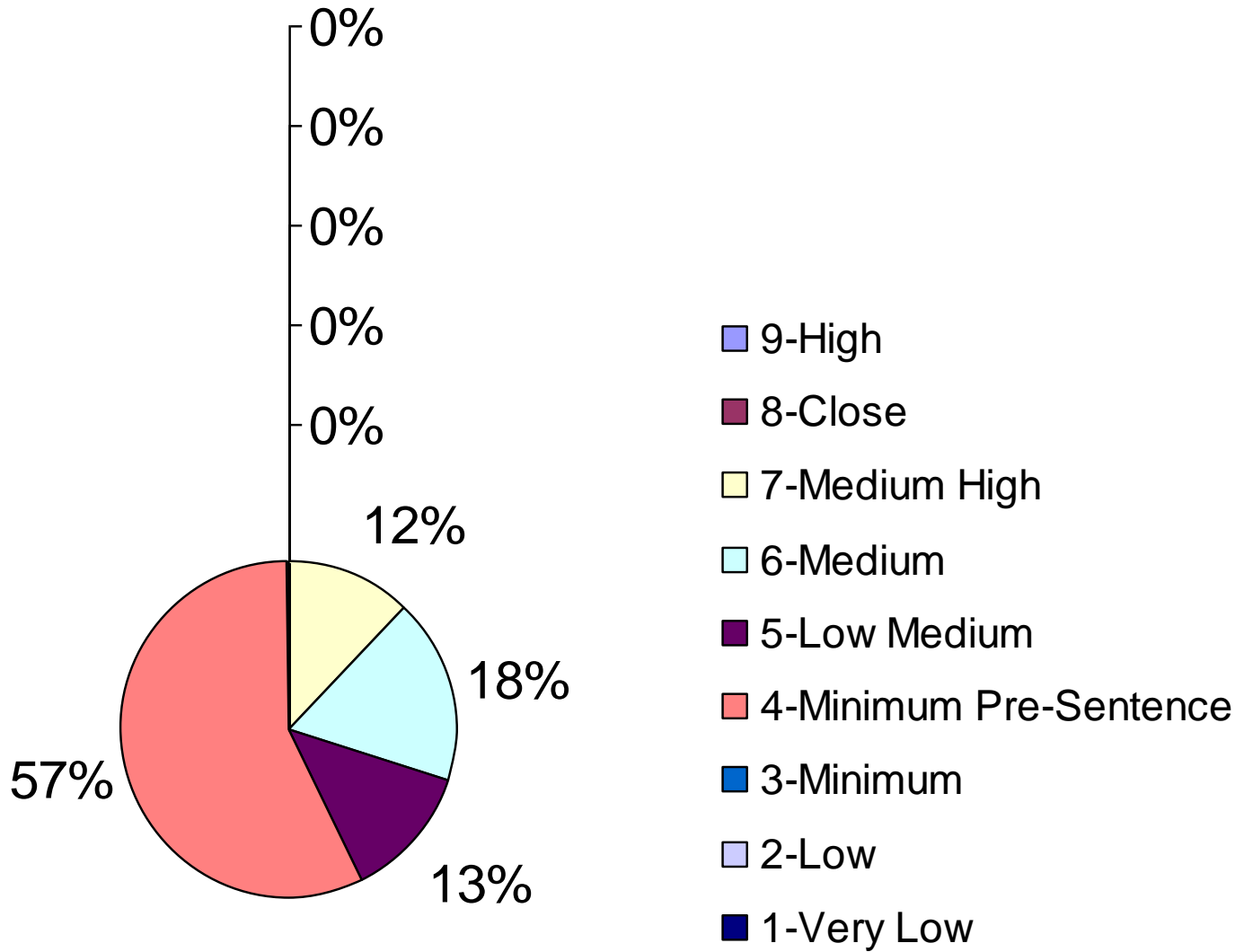
Note: Total Primary Classifications will not equal to Total Bookings reported in Jail Population Report due to quick books.
PC stands for Protective Custody.

Female classifications started Apr 08

Primary Classification - Custody Level of Male Inmates



Primary Classification - Custody Level of Female Inmates



Transitional Towers - Programs Transcend

March-09



Incidents	This Month to Last Month				Same Month Last Year			Year to Date (Last Year/This Year)			
	Mar-09	Feb-09	(+/-)	% Chng	Mar-08	(+/-)	% Chng	2009	2008	(+/-)	% Chng
6th Floor	37	37	0	0%	40	-3	-8%	116	91	25	27%
Assaultive	1	2	-1	-50%	1	0	0%	5	3	2	67%
Non- Assaultive	36	34	2	6%	34	2	6%	110	83	27	33%
Contraband	0	1	-1	-100%	5	-5	-100%	1	5	-4	-80%
5th Floor	35	21	14	67%	37	-2	-5%	102	116	-14	-12%
Assaultive	0	2	-2	-100%	1	-1	-100%	5	2	3	150%
Non- Assaultive	34	18	16	89%	34	0	0%	94	111	-17	-15%
Contraband	1	1	0	0%	2	-1	-50%	3	3	0	0%

Programs	This Month to Last Month				Same Month Last Year			Year to Date (Last Year/This Year)			
	Mar-09	Feb-09	(+/-)	% Chng	Mar-08	(+/-)	% Chng	2009	2008	(+/-)	% Chng
Participants	691	736	-45	-6%	1097	-406	-37%	2110	3414	-1304	-38%
Alcohol & Drugs	71	76	-5	-7%	53	18	34%	217	267	-50	-19%
Anger Management	101	104	-3	-3%	132	-31	-23%	308	378	-70	-19%
DUI	49	50	-1	-2%	0	49	0%	148	129	19	15%
Basic Spanish	29	28	1	4%	69	-40	-58%	78	134	-56	-42%
Narcotics Anonymous	0	0	0	0%	0	0	0%	0	65	-65	-100%
MCS	0	0	0	0%	0	0	0%	0	0	0	0%
HIV	59	0	59	0%	0	59	0%	59	0	59	0%
MRT	9	36	-27	-75%	34	-25	-74%	51	122	-71	-58%
Real Talk	332	262	70	27%	196	136	69%	852	1311	-459	-35%
L.I.F.E.	41	180	-139	-77%	114	-73	-64%	397	509	-112	-22%
Sessions	34	32	2	6%	24	10	42%	96	121	-25	-21%
Alcohol & Drugs	3	2	1	50%	2	1	50%	7	9	-2	-22%
Anger Management	4	4	0	0%	4	0	0%	13	12	1	8%
DUI	4	3	1	33%	0	4	0%	10	7	3	43%
Basic Spanish	2	2	0	0%	2	0	0%	5	6	-1	-17%
Narcotics Anonymous	0	0	0	0%	0	0	0%	0	2	-2	-100%
MCS	0	0	0	0%	0	0	0%	0	0	0	0%
HIV	2	0	2	0%	0	2	0%	2	0	2	0%
MRT	1	3	-2	-67%	4	-3	-75%	5	12	-7	-58%
Real Talk	17	12	5	42%	7	10	143%	41	59	-18	-31%
L.I.F.E.	1	6	-5	-83%	4	-3	-75%	13	13	0	0%

Religious Services	This Month to Last Month				Same Month Last Year			Year to Date (Last Year/This Year)			
	Mar-09	Feb-09	(+/-)	% Chng	Mar-08	(+/-)	% Chng	2009	2008	(+/-)	% Chng
Total Worship Participants	859	811	48	6%	847	12	1%	2448	2653	-205	-8%
Chaplain Worship	569	524	45	9%	383	186	49%	1625	1222	403	33%
Volunteer (Christian, Muslim) Worship	290	287	3	1%	464	-174	-38%	823	1431	-608	-42%
Total Worship Sessions	26	25	1	4%	0	26	0%	73	0	73	0%
Chaplain Worship	15	14	1	7%	0	15	0%	40	0	40	0%
Volunteer (Christian, Muslim) Worship	11	11	0	0%	0	11	0%	33	0	33	0%

Green: decrease Red: increase

Counting incident numbers not offenses.

Counting Worship Sessions Jul 08

17

Hopeville North and South

March-09

Incidents	This Month to Last Month				Same Month Last Year			Year to Date (Last Year/This Year)			
	Mar-09	Feb-09	(+/-)	% Chng	Mar-08	(+/-)	% Chng	2009	2008	(+/-)	% Chng
4th Floor Unit	260	255	5	2%	181	79	44%	740	375	365	97%
Assaultive	11	11	0	0%	15	-4	-27%	38	26	12	46%
Non- Assaultive	236	234	2	1%	152	84	55%	672	322	350	109%
Contraband	13	10	3	30%	14	-1	-7%	30	27	3	11%

Programs	This Month to Last Month				Same Month Last Year			Year to Date (Last Year/This Year)			
	Mar-09	Feb-09	(+/-)	% Chng	Mar-08	(+/-)	% Chng	2009	2008	(+/-)	% Chng
Participant	1721	1674	47	3%	1265	456	36%	4924	2667	2257	85%
Alcohol & Drugs	131	113	18	16%	37	94	254%	360	37	323	873%
Anger Management	258	261	-3	-1%	205	53	26%	798	472	326	69%
Moral Reconciliation Therapy	589	603	-14	-2%	594	-5	-1%	1800	1242	558	45%
MCS	10	0	10	0%	0	10	0%	10	0	10	0%
Commitment to Change	164	159	5	3%	29	135	466%	485	29	456	1572%
HIV	35	0	35	0%	0	35	0%	35	0	35	0%
Life Skills	206	205	1	0%	107	99	93%	635	253	382	151%
Narcotic Anonymous	65	76	-11	-14%	66	-1	-2%	234	188	46	24%
Inside Out Dad	54	56	-2	-4%	51	3	6%	157	95	62	65%
Real Talk	209	201	8	4%	176	33	19%	410	351	59	17%
Sessions	54	49	5	10%	42	12	29%	150	86	64	74%
Alcohol & Drugs	4	3	1	33%	1	3	300%	10	1	9	900%
Anger Management	7	7	0	0%	6	1	17%	22	14	8	57%
Moral Reconciliation Therapy	17	18	-1	-6%	19	-2	-11%	53	39	14	36%
MCS	1	0	1	0%	0	1	0%	1	0	1	0%
Commitment to Change	4	4	0	0%	1	3	300%	12	1	11	1100%
HIV	1	0	1	0%	0	1	0%	1	0	1	0%
Life Skills	7	5	2	40%	4	3	75%	19	8	11	138%
Narcotic Anonymous	2	2	0	0%	2	0	0%	7	5	2	40%
Inside Out Dad	4	4	0	0%	4	0	0%	12	8	4	50%
Real Talk	7	6	1	17%	5	2	40%	13	10	3	30%

Religious Services	This Month to Last Month				Same Month Last Year			Year to Date (Last Year/This Year)			
	Mar-09	Feb-09	(+/-)	% Chng	Mar-08	(+/-)	% Chng	2009	2008	(+/-)	% Chng
Total Worship Participants	533	430	103	24%	686	-153	-22%	1587	1411	176	12%
Chaplain Worship	200	205	-5	-2%	232	-32	-14%	625	491	134	27%
Volunteer (Christian, Muslim) Worship	333	225	108	48%	454	-121	-27%	962	920	42	5%
Total Worship Sessions	44	39	5	13%	0	44	0%	119	0	119	0%
Chaplain Worship	24	22	2	9%	0	24	0%	62	0	62	0%
Volunteer (Christian, Muslim) Worship	20	17	3	18%	0	20	0%	57	0	57	0%

Green: decrease Red: increase

Counting incident numbers not offenses.

Counting Worship Sessions Jul 08

Poplar Place

March-09



Incidents	This Month to Last Month				Same Month Last Year			Year to Date (Last Year/This Year)			
	Mar-09	Feb-09	(+/-)	% Chng	Mar-08	(+/-)	% Chng	2009	2008	(+/-)	% Chng
3rd Floor	186	131	55	42%	181	5	3%	478	318	160	50%
Assaultive	5	3	2	67%	3	2	67%	17	5	12	240%
Non- Assaultive	177	126	51	40%	175	2	1%	452	298	154	52%
Contraband	3	2	1	50%	3	0	0%	9	15	-6	-40%

Programs	This Month to Last Month				Same Month Last Year			Year to Date (Last Year/This Year)			
	Mar-09	Feb-09	(+/-)	% Chng	Mar-08	(+/-)	% Chng	2009	2008	(+/-)	% Chng
Participants	1393	1382	11	1%	930	463	50%	4208	2236	1972	88%
Alcohol & Drugs	114	117	-3	-3%	35	79	226%	350	35	315	900%
Anger Management	341	320	21	7%	242	99	41%	985	399	586	147%
Narcotics Anonymous	103	106	-3	-3%	31	72	232%	318	31	287	926%
Life Skills	141	137	4	3%	0	141	0%	413	275	138	50%
MCS	6	0	6	0%	0	6	0%	29	0	29	0%
Moral Reconciliation Therapy	336	332	4	1%	260	76	29%	998	541	457	84%
HIV	0	19	-19	-100%	0	0	0%	63	136	-73	-54%
Real Talk	352	351	1	0%	362	-10	-3%	1052	819	233	28%
Sessions	47	43	4	9%	34	13	38%	138	77	61	79%
Alcohol & Drugs	3	3	0	0%	2	1	50%	9	2	7	350%
Anger Management	11	12	-1	-8%	10	1	10%	35	17	18	106%
Narcotics Anonymous	3	3	0	0%	1	2	200%	9	1	8	800%
Life Skills	4	4	0	0%	0	4	0%	12	7	5	71%
MCS	2	0	2	0%	0	2	0%	5	0	5	0%
Moral Reconciliation Therapy	10	10	0	0%	8	2	25%	29	16	13	81%
HIV	0	1	-1	-100%	0	0	0%	3	4	-1	-25%
Real Talk	14	10	4	40%	13	1	8%	36	30	6	20%

Religious Services	This Month to Last Month				Same Month Last Year			Year to Date (Last Year/This Year)			
	Mar-09	Feb-09	(+/-)	% Chng	Mar-08	(+/-)	% Chng	2009	2008	(+/-)	% Chng
Total Worship Participants	1034	866	168	19%	946	88	9%	2768	1931	837	43%
Chaplain Worship	487	450	37	8%	412	75	18%	1311	808	503	62%
Volunteer (Christian, Muslim) Worship	547	416	131	31%	534	13	2%	1457	1123	334	30%
Total Worship Sessions	39	35	4	11%	0	39	0%	106	0	106	0%
Chaplain Worship	17	17	0	0%	0	17	0%	46	0	46	0%
Volunteer (Christian, Muslim) Worship	22	18	4	22%	0	22	0%	60	0	60	0%

Green: decrease Red: increase

Counting incident numbers not offenses.

Counting Worship Sessions Jul 08

Poplar Place Extended

March-09



Incidents	This Month to Last Month				Same Month Last Year			Year to Date (Last Year/This Year)			
	Mar-09	Feb-09	(+/-)	% Chng	Mar-08	(+/-)	% Chng	2009	2008	(+/-)	% Chng
Annex	60	26	34	131%	31	29	94%	106	55	51	93%
Assaultive	2	0	2	0%	1	1	100%	3	2	1	50%
Non- Assaultive	54	25	29	116%	27	27	100%	95	47	48	102%
Contraband	4	1	3	300%	3	1	33%	8	6	2	33%
Annex Kitchen	0	0	0	0%	0	0	0%	0	1	-1	-100%
Assaultive	0	0	0	0%	0	0	0%	0	1	-1	-100%
Non- Assaultive	0	0	0	0%	0	0	0%	0	0	0	0%
Contraband	0	0	0	0%	0	0	0%	0	0	0	0%

Programs	This Month to Last Month				Same Month Last Year			Year to Date (Last Year/This Year)			
	Mar-09	Feb-09	(+/-)	% Chng	Mar-08	(+/-)	% Chng	2009	2008	(+/-)	% Chng
Participants	1044	1130	-86	-8%	620	424	68%	3373	2990	383	13%
Alcohol & Drugs	127	168	-41	-24%	62	65	105%	503	375	128	34%
Anger Management	98	96	2	2%	45	53	118%	296	300	-4	-1%
MCS	0	3	-3	-100%	0	0	0%	13	0	13	0%
Moral Reconciliation Therapy	511	502	9	2%	362	149	41%	1517	1162	355	31%
Real Talk	302	308	-6	-2%	114	188	165%	928	527	401	76%
H.A.B.E.	0	53	-53	-100%	37	-37	-100%	110	94	16	17%
W.R.A.P.	0	0	0	0%	0	0	0%	0	95	-95	-100%
Pre GED Math	6	0	6	0%	0	6	0%	6	0	6	0%
Other	0	0	0	0%	0	0	0%	0	32	-32	-100%
Sessions	35	45	-10	-22%	31	4	13%	121	125	-4	-3%
Alcohol & Drugs	4	4	0	0%	2	2	100%	12	9	3	33%
Anger Management	4	4	0	0%	6	-2	-33%	12	18	-6	-33%
MCS	0	3	-3	-100%	0	0	0%	6	0	6	0%
Moral Reconciliation Therapy	17	19	-2	-11%	14	3	21%	53	49	4	8%
Real Talk	9	11	-2	-18%	5	4	80%	30	19	11	58%
H.A.B.E.	0	4	-4	-100%	4	-4	-100%	7	8	-1	-13%
W.R.A.P.	0	0	0	0%	0	0	0%	0	7	-7	-100%
Pre GED Math	1	0	1	0%	0	1	0%	1	0	1	0%
Other	0	0	0	0%	0	0	0%	0	4	-4	-100%

Religious Services	This Month to Last Month				Same Month Last Year			Year to Date (Last Year/This Year)			
	Mar-09	Feb-09	(+/-)	% Chng	Mar-08	(+/-)	% Chng	2009	2008	(+/-)	% Chng
Total Worship Participants	680	555	125	23%	506	174	34%	1810	1748	62	4%
Chaplain Worship	234	255	-21	-8%	119	115	97%	684	509	175	34%
Volunteer (Christian, Muslim) Worship	446	300	146	49%	387	59	15%	1126	1239	-113	-9%
Total Worship Sessions	40	32	8	25%	0	40	0%	101	0	101	0%
Chaplain Worship	15	16	-1	-6%	0	15	0%	42	0	42	0%
Volunteer (Christian, Muslim) Worship	25	16	9	56%	0	25	0%	59	0	59	0%

Green: decrease Red: increase

* Counting incident numbers not offenses.

Counting Worship Sessions Jul 08

Pre GED Math Mar 09

Team New Chicago

March-09



Incidents	This Month to Last Month				Same Month Last Year			Year to Date (Last Year/This Year)			
	Mar-09	Feb-09	(+/-)	% Chng	Mar-08	(+/-)	% Chng	2009	2008	(+/-)	% Chng
2nd Floor	73	60	13	22%	51	22	43%	199	158	41	26%
Assaultive	8	5	3	60%	4	4	100%	18	14	4	29%
Non- Assaultive	62	44	18	41%	44	18	41%	163	135	28	21%
Contraband	3	11	-8	-73%	3	0	0%	18	9	9	100%

Programs	This Month to Last Month				Same Month Last Year			Year to Date (Last Year/This Year)			
	Mar-09	Feb-09	(+/-)	% Chng	Mar-08	(+/-)	% Chng	2009	2008	(+/-)	% Chng
2nd Floor Participants	106	157	-51	-32%	163	-57	-35%	429	444	-15	-3%
Alcohol and Drugs	0	0	0	0%	0	0	0%	0	2	-2	-100%
Anger Management	64	63	1	2%	51	13	25%	202	148	54	36%
Life Skills	0	0	0	0%	3	-3	-100%	0	18	-18	-100%
Stop the Violence	28	42	-14	-33%	12	16	133%	114	47	67	143%
MCS	0	11	-11	-100%	0	0	0%	18	0	18	0%
HIV	0	7	-7	-100%	7	-7	-100%	7	18	-11	-61%
Real Talk	14	34	-20	-59%	90	-76	-84%	88	211	-123	-58%
2nd Floor Sessions	10	14	-4	-29%	19	-9	-47%	38	54	-16	-30%
Alcohol and Drugs	0	0	0	0%	0	0	0%	0	1	-1	-100%
Anger Management	5	4	1	25%	4	1	25%	13	12	1	8%
Life Skills	0	0	0	0%	3	-3	-100%	0	11	-11	-100%
Stop the Violence	4	4	0	0%	4	0	0%	12	12	0	0%
MCS	0	3	-3	-100%	0	0	0%	7	0	7	0%
HIV	0	1	-1	-100%	1	-1	-100%	1	2	-1	-50%
Real Talk	1	2	-1	-50%	7	-6	-86%	5	16	-11	-69%
2nd Floor Mental Health Participants	974	947	27	3%	0	974	0%	2758	0	2758	0%
Alcohol and Drugs	72	147	-75	-51%	0	72	0%	327	0	327	0%
Real Talk	192	182	10	5%	0	192	0%	631	0	631	0%
Group Therapy	289	235	54	23%	0	289	0%	705	0	705	0%
MCS	1	0	1	0%	0	1	0%	1	0	1	0%
Life Skills	332	289	43	15%	0	332	0%	868	0	868	0%
HIV	0	8	-8	-100%	0	0	0%	52	0	52	0%
Book Club	88	86	2	2%	0	88	0%	174	0	174	0%
2nd Floor Mental Health Sessions	51	62	-11	-18%	0	51	0%	152	0	152	0%
Alcohol and Drugs	6	9	-3	-33%	0	6	0%	20	0	20	0%
Real Talk	8	11	-3	-27%	0	8	0%	32	0	32	0%
Group Therapy	16	16	0	0%	0	16	0%	40	0	40	0%
MCS	1	0	1	0%	0	1	0%	1	0	1	0%
Life Skills	13	19	-6	-32%	0	13	0%	43	0	43	0%
HIV	0	1	-1	-100%	0	0	0%	3	0	3	0%
Book Club	7	6	1	17%	0	7	0%	13	0	13	0%

Religious Services	This Month to Last Month				Same Month Last Year			Year to Date (Last Year/This Year)			
	Mar-09	Feb-09	(+/-)	% Chng	Mar-08	(+/-)	% Chng	2009	2008	(+/-)	% Chng
Total Worship Participants	329	198	131	66%	270	59	22%	741	870	-129	-15%
Chaplain Worship	249	179	70	39%	105	144	137%	593	345	248	72%
Volunteer (Christian, Muslim) Worship	80	19	61	321%	165	-85	-52%	148	525	-377	-72%
Total Worship Sessions	12	11	1	9%	0	12	0%	38	0	38	0%
Chaplain Worship	8	7	1	14%	0	8	0%	21	0	21	0%
Volunteer (Christian, Muslim) Worship	4	4	0	0%	0	4	0%	17	0	17	0%

Green: decrease Red: increase

Counting incident numbers not offenses.
A&D 2nd fl mental health added Oct 2008
Book club started Feb 2009.

2nd fl (jm) participants and sessions totals reflect #'s from previous months that are no longer being used
Worship Sessions Jul 08 HIV is a new program started in 2nd Floor Mental Health in Jan 09.

Stone Bay

March-09

Incidents	This Month to Last Month				Same Month Last Year			Year to Date (Last Year/This Year)			
	Mar-09	Feb-09	(+/-)	% Chng	Mar-08	(+/-)	% Chng	2009	2008	(+/-)	% Chng
1st Floor	59	69	-10	-14%	26	33	127%	193	142	51	36%
Assaultive	11	17	-6	-35%	7	4	57%	38	16	22	138%
Non- Assaultive	45	50	-5	-10%	18	27	150%	147	122	25	20%
Contraband	3	2	1	50%	1	2	200%	8	4	4	100%
2nd Floor JM Housing	0	2	-2	-100%	6	-6	-100%	2	7	-5	-71%
Assaultive	0	1	-1	-100%	2	-2	-100%	1	3	-2	-67%
Non- Assaultive	0	1	-1	-100%	0	0	0%	1	0	1	0%
Contraband	0	0	0	0%	4	-4	-100%	0	4	-4	-100%
Lower Level North	8	13	-5	-38%	0	8	0%	27	0	27	0%
Assaultive	1	3	-2	-67%	0	1	0%	7	0	7	0%
Non- Assaultive	7	8	-1	-13%	0	7	0%	18	0	18	0%
Contraband	0	2	-2	-100%	0	0	0%	2	0	2	0%

Green: decrease Red: increase



Jail DRT Report

March-09



Jail DRT	This Month to Last Month				Same Month Last Year			Year to Date (Last Year/This Year)			
	Mar-09	Feb-09	(+/-)	% Chng	Mar-08	(+/-)	% Chng	2009	2008	(+/-)	% Chng
Callouts	5	6	-1	-17%	0	5	0%	16	4	12	300%
6 - 2 Shift	4	3	1	33%	0	4	0%	9	3	6	200%
2 - 10 Shift	1	2	-1	-50%	0	1	0%	6	1	5	500%
10- 6 Shift	0	1	-1	-100%	0	0	0%	1	0	1	0%
Referrals / Escorts	310	285	25	9%	144	166	115%	908	431	477	111%
6 - 2 Shift	184	171	13	8%	83	101	122%	540	236	304	129%
2 - 10 Shift	114	105	9	9%	54	60	111%	333	174	159	91%
10- 6 Shift	12	9	3	33%	7	5	71%	35	21	14	67%
Areas Patrolled	493	470	23	5%	302	191	63%	1477	933	544	58%
6 - 2 Shift	142	136	6	4%	98	44	45%	430	316	114	36%
2 - 10 Shift	131	123	8	7%	61	70	115%	395	220	175	80%
10- 6 Shift	220	211	9	4%	143	77	54%	652	397	255	64%
DRT Shakedowns	923	860	63	7%	609	314	52%	2709	1823	886	49%
Clothed Body Search	502	489	13	3%	362	140	39%	1504	1074	430	40%
Random (Cell Searches)	376	352	24	7%	238	138	58%	1115	726	389	54%
Random (Entire Pod)	35	11	24	218%	6	29	483%	64	16	48	300%
Scheduled (Entire Pod)	10	8	2	25%	3	7	233%	26	7	19	271%
Grievances	0	0	0	0%	0	0	0%	0	0	0	0%
Codes (Red,White,Blue) Response	98	91	7	8%	78	20	26%	276	214	62	29%
K-9 Searches	493	487	6	1%	426	67	16%	1484	1182	302	26%

Green: decrease Red: increase

BPSI - Criminal Investigative Unit Report

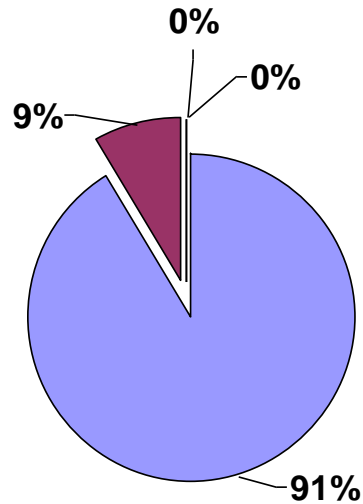
March-09

CIU Stats	This Month to Last Month				Same Month Last Year			Year to Date (Last Year/This Year)			
	Mar-09	Feb-09	(+/-)	% Chng	Mar-08	(+/-)	% Chng	2009	2008	(+/-)	% Chng
New Cases Opened	49	31	18	58%	34	15	44%	124	125	-1	-1%
Total Incidents Reviewed	124	110	14	13%	109	15	14%	379	348	31	9%
Cases Disposed	53	25	28	112%	41	12	29%	125	123	2	2%
Unfounded	1	2	-1	-50%	0	1	0%	4	0	4	0%
Referred for Administrative Investigation	2	0	2	0%	0	2	0%	2	2	0	0%
Referred GIB	2	0	2	0%	0	2	0%	3	2	1	50%
Referred GIU	0	0	0	0%	0	0	0%	0	0	0	0%
Cases Reviewed by DAG/JC	48	23	25	109%	41	7	17%	116	119	-3	-3%
Cleared by Arrest	46	21	25	119%	41	5	12%	109	102	7	7%
Warrant Issued	1	2	-1	-50%	0	1	0%	6	10	-4	-40%
Denied by Judicial Commissioner	0	0	0	0%	0	0	0%	0	0	0	0%
Denied by DAG	1	0	1	0%	0	1	0%	1	7	-6	-86%
Disposition	46	21	25	119%	37	9	24%	109	100	9	9%
Active	28	18	10	56%	16	12	75%	68	37	31	84%
Nolle Prosequi	11	2	9	450%	11	0	0%	23	39	-16	-41%
Convicted	7	1	6	600%	10	-3	-30%	18	24	-6	-25%
Indecent Exposure	17	9	8	89%	22	-5	-23%	45	57	-12	-21%
Active	9	8	1	13%	12	-3	-25%	26	28	-2	-7%
Nolle Prosequi	8	1	7	700%	5	3	60%	16	15	1	7%
Convicted	0	0	0	0%	5	-5	-100%	3	14	-11	-79%

Green: decrease Red: increase

Cases Reviewed by DAG/JC

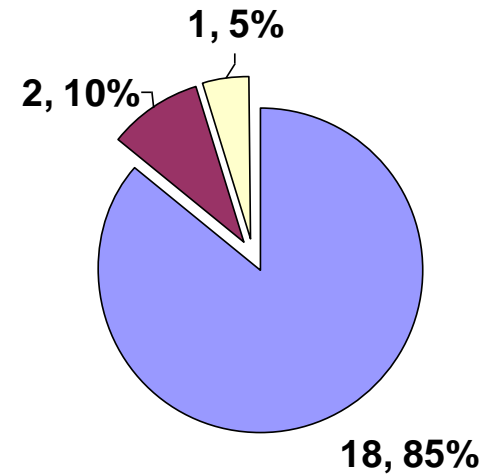
- Cleared by Arrest
- Warrant Issued
- Denied by Judicial Commissioner
- Denied by DAG



J. Sanders	#08108429
J. Sanders	#08108429
J. Sanders	#08108429
M. Stevenson	#07109138
D. Clark	#08137716
T. Townsel	#09107378
R. Leslie	#08112120
G. Robinson	#08134707

Disposition

- Active
- Nolle Prosequi
- Convicted



Aslt Staff	17 days
Aslt Staff	17 days
Aslt Staff	10 mths 7 days
PCS	2 days
Aslt Staff	30 days
Aslt Staff	27 days
Inm Aslt	30 days
Inm Aslt	30 days

Jail Inmate Disciplinary Data

March-09

Jail Disciplinary Stats	This Month to Last Month				Same Month Last Year			Year to Date (Last Year/This Year)			
	Mar-09	Feb-09	(+/-)	% Chng	Mar-08	(+/-)	% Chng	2009	2008	(+/-)	% Chng
Disciplinary Hearings Scheduled	358	329	29	9%	249	109	44%	992	818	174	21%
Disciplinary Outcomes	276	287	-11	-4%	215	61	28%	830	679	151	22%
Sentenced Detention	182	213	-31	-15%	142	40	28%	593	460	133	29%
Probation	54	48	6	13%	30	24	80%	148	87	61	70%
Not Guilty	27	26	1	4%	7	20	286%	76	62	14	23%
Disciplinary Sanctions	13	0	13	0%	36	-23	-64%	13	70	-57	-81%
Dismissals	82	42	40	95%	34	48	141%	162	139	23	17%
Due to Procedural Violations	23	7	16	229%	2	21	1050%	38	29	9	31%
Victims	25	14	11	79%	15	10	67%	54	50	4	8%
Released	22	13	9	69%	16	6	38%	47	54	-7	-13%
Medical	12	8	4	50%	1	11	1100%	23	6	17	283%
Sanction by Floors	601	445	156	35%	418	183	44%	1481	963	518	54%
6th Floor	33	27	6	22%	31	2	6%	104	56	48	86%
5th Floor	31	10	21	210%	24	7	29%	66	70	-4	-6%
4th Floor	191	179	12	7%	121	70	58%	521	302	219	73%
3rd Floor	194	147	47	32%	168	26	15%	482	344	138	40%
2nd Floor	27	28	-1	-4%	37	-10	-27%	89	85	4	5%
1st Floor	44	17	27	159%	11	33	300%	79	53	26	49%
Lower Level	19	12	7	58%	2	17	850%	38	15	23	153%
Annex	62	25	37	148%	24	38	158%	102	38	64	168%

Green: decrease Red: increase

Jail Gang Report

March-09

Jail Gang Stats	This Month to Last Month				Same Month Last Year			Year to Date (Last Year/This Year)			
	Mar-09	Feb-09	(+/-)	% Chng	Mar-08	(+/-)	% Chng	2009	2008	(+/-)	% Chng
Gang Related Incidents	2	3	-1	-33%	103	-101	-98%	16	290	-274	-94%
201 Poplar	2	3	-1	-33%	101	-99	-98%	14	283	-269	-95%
Jail East	0	0	0	0%	2	-2	-100%	2	7	-5	-71%
Total Incidents Reviewed	270	278	-8	-3%	299	-29	-10%	845	784	61	8%
Total Violent Incidents Reviewed	78	72	6	8%	72	6	8%	222	186	36	19%
Assault to Staff	8	10	-2	-20%	5	3	60%	32	16	16	100%
Spit/Urine/Feces/Staff	9	10	-1	-10%	3	6	200%	24	10	14	140%
Threat to Staff by Inmate	33	24	9	38%	31	2	6%	76	80	-4	-5%
Inmate Assault	28	28	0	0%	33	-5	-15%	90	80	10	13%
Total Gang Validations	72	62	10	16%	96	-24	-25%	211	201	10	5%
Intake Validated	59	48	11	23%	83	-24	-29%	164	179	-15	-8%
Facility Validated	13	14	-1	-7%	13	0	0%	47	22	25	114%
Field Validated	0	0	0	0%	0	0	0%	0	0	0	0%
Total Updated (Validation) Files	357	259	98	38%	355	2	1%	965	765	200	26%
Intake Validated	347	245	102	42%	342	5	1%	934	728	206	28%
Facility Validated	10	14	-4	-29%	13	-3	-23%	31	37	-6	-16%
Field Validated	0	0	0	0%	0	0	0%	0	0	0	0%
Total Interviewed in Intake	1870	1889	-19	-1%	1915	-45	-2%	5818	4494	1324	29%
Total Interviewed in Facility	1131	1051	80	8%	403	728	181%	3433	1075	2358	219%
Weekly Avg. Known Gang Members	568	572	-5	-1%	472	96	20%	581	464	117	25%
Gangster Disciple	176	179	-3	-2%	184	-8	-4%	183	186	-3	-2%
Vice Lords	116	127	-11	-8%	120	-4	-4%	126	119	6	5%
Crips	131	121	10	8%	84	47	56%	124	83	41	49%
Others	138	140	-1	-1%	84	55	65%	142	76	66	86%
Latino	7	7	0	0%	0	7	0%	7	0	7	0%
Security Threat Group	96	105	-9	-9%	136	-40	-30%	103	151	-49	-32%
Adult Gang Members CJC	516	524	-8	-2%	431	85	20%	1586	1259	327	26%
Juvenile Gang Members CJC	11	14	-3	-21%	8	3	38%	40	26	14	55%
Total Gang Members CJC	527	538	-11	-2%	439	88	20%	1626	1285	341	27%
Juvenile Gang Members JE	27	21	6	29%	23	4	17%	70	69	1	1%
Female Gang Members JE	7	8	-1	-13%	10	-3	-30%	26	35	-9	-26%
Total Gang Members JE	34	29	5	17%	33	1	3%	96	105	-9	-8%
Total Gang Members	561	567	-6	-1%	472	89	19%	1722	1389	333	24%
Total Gang Members Released	387	418	-31	-7%	390	-3	-1%	1247	390	857	220%

Green: decrease Red: increase

Note: Starting Jul 07, no longer reporting field validated b/c we no longer work with blue c No longer reporting Gang Involved Incidents per sheriff and Lt. Harrison

Note: Starting Jul 08, reporting field validated b/c we are working with blue crush

Latino count added Aug 08

Note: Total Gang Members Released started Mar 08

Jail Grievance Report

March-09

Jail Grievances	This Month to Last Month				Same Month Last Year			Year to Date (Last Year/This Year)			
	Mar-09	Feb-09	(+/-)	% Chng	Mar-08	(+/-)	% Chng	2009	2008	(+/-)	% Chng
Total Grievances Received	475	374	101	27%	430	45	10%	1312	1371	-59	-4%
1st Floor Admin Seg	48	32	16	50%	61	-13	-21%	143	135	8	6%
2nd Floor	72	54	18	33%	63	9	14%	218	252	-34	-13%
3rd Floor	94	53	41	77%	90	4	4%	227	276	-49	-18%
4th Floor	132	120	12	10%	92	40	43%	366	297	69	23%
5th Floor	20	20	0	0%	25	-5	-20%	71	104	-33	-32%
6th Floor	25	13	12	92%	8	17	213%	58	33	25	76%
Annex	36	19	17	89%	27	9	33%	78	103	-25	-24%
Lower Level	9	6	3	50%	2	7	350%	20	5	15	300%
Jail East	39	55	-16	-29%	59	-20	-34%	129	161	-32	-20%
Juveniles	0	2	-2	-100%	3	-3	-100%	2	5	-3	-60%
Total Non Valid Grievances Received	140	120	20	17%	103	37	36%	407	333	74	22%
Total Valid Grievances Received	335	254	81	32%	327	8	2%	905	1038	-133	-13%
201 Poplar	312	218	94	43%	284	28	10%	821	923	-102	-11%
Staff Actions	195	149	46	31%	170	25	15%	515	486	29	6%
Medical	48	31	17	55%	51	-3	-6%	122	184	-62	-34%
Food Services	19	9	10	111%	18	1	6%	37	55	-18	-33%
Programs	16	3	13	433%	10	6	60%	35	42	-7	-17%
Maintenance	0	2	-2	-100%	0	0	0%	4	16	-12	-75%
Laundry	9	4	5	125%	17	-8	-47%	26	50	-24	-48%
Religious	0	1	-1	-100%	1	-1	-100%	5	4	1	25%
Commissary	2	2	0	0%	0	2	0%	5	7	-2	-29%
Swanson (Mail, Property and Accounting)	14	11	3	27%	13	1	8%	44	37	7	19%
Hygiene	0	2	-2	-100%	0	0	0%	4	4	0	0%
Support Svc Heating/Cooling/Ventilation	4	1	3	300%	4	0	0%	11	38	-27	-71%
Telecommunication	5	3	2	67%	0	5	0%	13	0	13	0%
Jail East	23	36	-13	-36%	43	-20	-47%	84	115	-31	-27%
Staff Actions	9	16	-7	-44%	22	-13	-59%	33	62	-29	-47%
Medical	2	7	-5	-71%	15	-13	-87%	14	27	-13	-48%
Food Services	3	4	-1	-25%	3	0	0%	8	6	2	33%
Programs	2	1	1	100%	1	1	100%	3	4	-1	-25%
Maintenance	1	1	0	0%	0	1	0%	4	0	4	0%
Laundry	0	0	0	0%	1	-1	-100%	0	4	-4	-100%
Religious	0	0	0	0%	0	0	0%	0	1	-1	-100%
Commissary	0	0	0	0%	0	0	0%	0	0	0	0%
Swanson (Mail, Property and Accounting)	5	6	-1	-17%	1	4	400%	15	5	10	200%
Hygiene	1	0	1	0%	0	1	0%	0	0	0	0%
Support Svc Heating/Cooling/Ventilation	0	0	0	0%	0	0	0%	5	6	-1	-17%
Telecommunication	0	1	-1	-100%	0	0	0%	1	0	1	0%
Open/Unresolved Grievances Over 10 Days	7	6	1	17%	5	2	40%	16	25	-9	-36%
Number of Inm Filed Grievances	322	266	56	21%	297	25	8%	893	942	-49	-5%
Percentage Inm Filed Grievances	12%	10%	2%	22%	12%	0%	2%	11%	13%	-1%	-10%

Green: decrease Red: increase

Programs grievances include legal room scheduling, television scheduling, recreations scheduling and counselors.

Telecommunication started Sept 08

Jail Offenses - 201 Poplar

March-09

201 Poplar	This Month to Last Month				Same Month Last Year			Year to Date (Last Year/This Year)			
	Mar-09	Feb-09	(+/-)	% Chng	Mar-08	(+/-)	% Chng	YTD 2009	YTD 2008	(+/-)	% Chng
Total Offenses	1337	1203	134	11%	882	455	52%	3697	2703	994	37%
Assaultive	44	50	-6	-12%	34	10	29%	106	103	3	3%
Alleged Rapes	0	0	0	0%	1	-1	-100%	0	1	-1	-100%
Assault to Staff	12	12	0	0%	5	7	140%	35	12	23	192%
Inciting Riot	0	0	0	0%	0	0	0%	0	0	0	0%
Inmate Assault	25	22	3	14%	22	3	14%	81	62	19	31%
Set Fire/Arson	1	4	-3	-75%	1	0	0%	7	1	6	600%
Sexual Battery to Inmate	0	2	-2	-100%	0	0	0%	2	0	2	0%
Sexual Battery to Staff	2	1	1	100%	1	1	100%	3	3	0	0%
Spit/Urine/Feces at Inmate	3	2	1	50%	0	3	0%	6	7	-1	-14%
Spit/Urine/Feces at Staff	6	12	-6	-50%	4	2	50%	23	17	6	35%
Non- Assaultive***	893	766	127	17%	580	313	54%	2442	1825	617	34%
Disrespect to Staff	167	160	7	4%	121	46	38%	491	394	97	25%
Inmates Altercation Verbal	31	30	1	3%	37	-6	-16%	99	109	-10	-9%
Liquid/Solid at Inmate	2	3	-1	-33%	1	1	100%	6	1	5	500%
Liquid/Solid at Staff	4	5	-1	-20%	1	3	300%	12	7	5	71%
Obscene Actions	46	52	-6	-12%	42	4	10%	171	149	22	15%
Refuse Staff Order	486	390	96	25%	289	197	68%	1265	872	393	45%
Threaten Inmate by Inmate	3	5	-2	-40%	2	1	50%	12	7	5	71%
Threaten Staff by Inmate	36	33	3	9%	16	20	125%	86	62	24	39%
Contraband	40	45	-5	-11%	32	8	25%	118	88	30	34%
Found Contraband	22	25	-3	-12%	18	4	22%	60	52	8	15%
Gang/STG Contraband	3	2	1	50%	1	2	200%	6	6	0	0%
Possession of Contraband*	15	18	-3	-17%	13	2	15%	52	30	22	73%
Other***	343	327	16	5%	205	138	67%	989	613	376	61%
Suicidal Behaviors	15	15	0	0%	31	-16	-52%	40	74	-34	-46%
Suicidal/Mutilative Actions	6	6	0	0%	12	-6	-50%	18	25	-7	-28%
Suicidal/Mutilative Major Injury	0	0	0	0%	2	-2	-100%	1	5	-4	-80%
Suicidal/Mutilative Minor Injury	1	6	-5	-83%	5	-4	-80%	8	15	-7	-47%
Verbal, Written, or Observed Behavior	8	3	5	167%	12	-4	-33%	13	29	-16	-55%
Deaths	2	0	2	0%	0	2	0%	2	0	2	0%

Green: decrease Red: increase

*Poss of Contraband includes poss of currency, hide prescribed meds, poss weapon, & poss alcohol/drugs

***Destruction of Property, Vulgar Language, and some other incidents not itemized on report card in previous months but included in total, have moved from Non Assaultive to Other.

Jail East

March-09

Incidents	This Month to Last Month				Same Month Last Year			Year to Date (Last Year/This Year)			
	Mar-09	Feb-09	(+/-)	% Chng	Mar-08	(+/-)	% Chng	2009	2008	(+/-)	% Chng
Jail East	25	22	3	14%	25	0	0%	66	81	-15	-19%
Assaultive	2	1	1	100%	1	1	100%	8	5	3	60%
Non- Assaultive	23	20	3	15%	24	-1	-4%	57	74	-17	-23%
Contraband	0	1	-1	-100%	0	0	0%	1	2	-1	-50%
Jail East Male Juveniles	9	5	4	80%	10	-1	-10%	27	22	5	23%
Assaultive	4	2	2	100%	2	2	100%	7	6	1	17%
Non- Assaultive	5	3	2	67%	8	-3	-38%	19	15	4	27%
Contraband	0	0	0	0%	0	0	0%	1	1	0	0%

Jail East Contraband	This Month to Last Month				Same Month Last Year			Year to Date (Last Year/This Year)			
	Mar-09	Feb-09	(+/-)	% Chng	Mar-08	(+/-)	% Chng	2009	2008	(+/-)	% Chng
Jail East	0	1	-1	-100%	1	-1	-100%	2	5	-3	-60%
Tobacco	0	0	0	0%	0	0	0%	0	0	0	0%
Marijuana	0	0	0	0%	0	0	0%	0	0	0	0%
Crack/Cocaine	0	0	0	0%	0	0	0%	0	0	0	0%
Prescribed Meds	0	0	0	0%	0	0	0%	0	1	-1	-100%
Weapons	0	0	0	0%	0	0	0%	0	1	-1	-100%
Money	0	0	0	0%	0	0	0%	0	0	0	0%
Other	0	1	-1	-100%	1	-1	-100%	2	3	-1	-33%

Jail East Sec Ops Stats	This Month to Last Month				Same Month Last Year			Year to Date (Last Year/This Year)			
	Mar-09	Feb-09	(+/-)	% Chng	Mar-08	(+/-)	% Chng	2009	2008	(+/-)	% Chng
Total 30 day Entire Area Shakedown	47	48	-1	-2%	31	16	52%	134	126	8	6%
Scheduled Shakedowns	23	24	-1	-4%	19	4	21%	66	63	3	5%
(Repeat) Scheduled & Unscheduled Shkdw	24	24	0	0%	12	12	100%	68	63	5	8%
Use of Force	2	1	1	100%	0	2	0%	4	7	-3	-43%
Planned	0	0	0	0%	0	0	0%	0	1	-1	-100%
Unplanned	2	1	1	100%	0	2	0%	4	6	-2	-33%
Chemical	2	1	1	100%	0	2	0%	4	3	1	33%
Restraint Chair (Security)	0	0	0	0%	0	0	0%	0	0	0	0%
4 Point Bed Restraints (Medical)	0	0	0	0%	0	0	0%	0	0	0	0%
Fire Drills	6	5	1	20%	6	0	0%	17	21	-4	-19%
Fire Drill Deficiencies	0	0	0	0%	0	0	0%	0	1	-1	-100%

Green: decrease Red: increase

Contraband & Sec ops separated out starting Feb 2008

Jail East Male Juveniles

March-09

Programs	This Month to Last Month				Same Month Last Year			Year to Date (Last Year/This Year)			
	Mar-09	Feb-09	(+/-)	% Chng	Mar-08	(+/-)	% Chng	2009	2008	(+/-)	% Chng
Juvenile Participants	240	142	98	69%	325	-85	-26%	677	1097	-420	-38%
Anger Management	44	31	13	42%	48	-4	-8%	90	132	-42	-32%
Moral Reconation Therapy	36	39	-3	-8%	26	10	38%	99	110	-11	-10%
Pre GED	131	46	85	185%	135	-4	-3%	327	424	-97	-23%
MCS	29	26	3	12%	11	18	164%	89	45	44	98%
Stop the Violence	0	0	0	0%	34	-34	-100%	0	110	-110	-100%
H.A.B.E.	0	0	0	0%	49	-49	-100%	72	166	-94	-57%
Goal Setting	0	0	0	0%	0	0	0%	0	0	0	0%
Character Building	0	0	0	0%	0	0	0%	0	0	0	0%
Life Skills	0	0	0	0%	0	0	0%	0	0	0	0%
Juvenile Sessions	28	20	8	40%	32	-4	-13%	80	92	-12	-13%
Anger Management	4	4	0	0%	4	0	0%	10	12	-2	-17%
Moral Reconation Therapy	6	7	-1	-14%	2	4	200%	18	9	9	100%
Pre GED	12	4	8	200%	15	-3	-20%	32	35	-3	-9%
MCS	6	5	1	20%	2	4	200%	17	8	9	113%
Stop the Violence	0	0	0	0%	4	-4	-100%	0	12	-12	-100%
H.A.B.E.	0	0	0	0%	4	-4	-100%	3	12	-9	-75%
Goal Setting	0	0	0	0%	0	0	0%	0	0	0	0%
Character Building	0	0	0	0%	0	0	0%	0	0	0	0%
Life Skills	0	0	0	0%	0	0	0%	0	0	0	0%

Religious Services	This Month to Last Month				Same Month Last Year			Year to Date (Last Year/This Year)			
	Mar-09	Feb-09	(+/-)	% Chng	Mar-08	(+/-)	% Chng	2009	2008	(+/-)	% Chng
Total Worship Participants	164	182	-18	-10%	448	-284	-63%	456	1297	-841	-65%
Chaplain Worship	0	0	0	0%	159	-159	-100%	0	411	-411	-100%
Volunteer (Christian, Muslim) Worship	164	182	-18	-10%	289	-125	-43%	456	886	-430	-49%
Total Worship Sessions	10	5	5	100%	0	10	0%	19	0	19	0%
Chaplain Worship	0	0	0	0%	0	0	0%	0	0	0	0%
Volunteer (Christian, Muslim) Worship	10	5	5	100%	0	10	0%	19	0	19	0%

Green: decrease Red: increase

Counting incident numbers not offenses.
Life Skills started Jun 2008

Counting Worship Sessions Jul 08

Goal Setting & Character Building started June 2008

Jail East Women Programs

March-09

Programs	This Month to Last Month				Same Month Last Year			Year to Date (Last Year/This Year)			
	Mar-09	Feb-09	(+/-)	% Chng	Mar-08	(+/-)	% Chng	2009	2008	(+/-)	% Chng
Participants	1013	1325	-312	-24%	1449	-436	-30%	3747	4340	-593	-14%
Alcohol Anonymous	64	52	12	23%	64	0	0%	136	210	-74	-35%
Moral Reconciliation Therapy	40	40	0	0%	145	-105	-72%	141	364	-223	-61%
Storybook	29	34	-5	-15%	27	2	7%	132	84	48	57%
Commitment to Change	206	226	-20	-9%	174	32	18%	671	331	340	103%
Literacy	43	62	-19	-31%	84	-41	-49%	195	217	-22	-10%
Job Readiness	3	14	-11	-79%	64	-61	-95%	25	97	-72	-74%
Addictive Behaviors	51	28	23	82%	68	-17	-25%	138	68	70	103%
Creative Awareness	62	111	-49	-44%	166	-104	-63%	253	398	-145	-36%
Fitness/Aerobic	236	264	-28	-11%	238	-2	-1%	770	877	-107	-12%
Women Of Excellence	19	16	3	19%	0	19	0%	57	45	12	27%
Parenting	0	0	0	0%	18	-18	-100%	0	94	-94	-100%
Pre GED Reading/Writing	11	10	1	10%	0	11	0%	51	50	1	2%
Pre GED Math	22	12	10	83%	12	10	83%	48	40	8	20%
HIV Awareness	75	96	-21	-22%	134	-59	-44%	288	418	-130	-31%
Hygiene	38	113	-75	-66%	77	-39	-51%	254	320	-66	-21%
CAAP	30	38	-8	-21%	38	-8	-21%	98	56	42	75%
Anger Management	25	61	-36	-59%	58	-33	-57%	138	201	-63	-31%
Alcohol & Drug	38	33	5	15%	34	4	12%	151	123	28	23%
Real Talk	21	115	-94	-82%	40	-19	-48%	201	159	42	26%
Who's In There	0	0	0	0%	0	0	0%	0	98	-98	-100%
2nd Chance Re-Entry	0	0	0	0%	0	0	0%	0	0	0	0%
Total Sessions	82	88	-6	-7%	79	3	4%	285	261	24	9%
Alcohol Anonymous	8	5	3	60%	7	1	14%	20	25	-5	-20%
Moral Reconciliation Therapy	10	7	3	43%	12	-2	-17%	27	34	-7	-21%
Storybook	3	4	-1	-25%	2	1	50%	11	9	2	22%
Commitment to Change	7	7	0	0%	4	3	75%	21	24	-3	-13%
Literacy	2	4	-2	-50%	3	-1	-33%	9	9	0	0%
Job Readiness	1	3	-2	-67%	4	-3	-75%	6	6	0	0%
Addictive Behaviors	2	2	0	0%	5	-3	-60%	10	5	5	100%
Creative Awareness	4	5	-1	-20%	6	-2	-33%	21	14	7	50%
Fitness/Aerobic	18	16	2	13%	15	3	20%	51	49	2	4%
Women Of Excellence	2	4	-2	-50%	0	2	0%	9	3	6	200%
Parenting	0	0	0	0%	2	-2	-100%	0	8	-8	-100%
Pre GED Reading/Writing	2	2	0	0%	0	2	0%	7	4	3	75%
Pre GED Math	4	4	0	0%	2	2	100%	11	6	5	83%
HIV Awareness	3	4	-1	-25%	5	-2	-40%	11	15	-4	-27%
Hygiene	2	4	-2	-50%	3	-1	-33%	9	13	-4	-31%
CAAP	2	2	0	0%	2	0	0%	7	4	3	75%
Anger Management	5	5	0	0%	2	3	150%	18	7	11	157%
Alcohol & Drug	5	4	1	25%	3	2	67%	16	10	6	60%
Real Talk	2	6	-4	-67%	1	1	100%	21	5	16	320%
Who's In There	0	0	0	0%	0	0	0%	0	0	0	0%
2nd Chance Re-Entry	0	0	0	0%	0	0	0%	0	0	0	0%

Religious Services	This Month to Last Month				Same Month Last Year			Year to Date (Last Year/This Year)			
	Mar-09	Feb-09	(+/-)	% Chng	Mar-08	(+/-)	% Chng	2009	2008	(+/-)	% Chng
Total Worship Participants	1086	839	247	29%	1653	-567	-34%	2724	5289	-2565	-48%
Chaplain Worship	0	0	0	0%	369	-369	-100%	0	760	-760	-100%
Volunteer (Christian, Muslim) Worship	1086	839	247	29%	1284	-198	-15%	2724	4529	-1805	-40%
Total Worship Sessions	56	59	-3	-5%	0	56	0%	170	0	170	0%
Chaplain Worship	0	0	0	0%	0	0	0%	0	0	0	0%
Volunteer (Christian, Muslim) Worship	56	59	-3	-5%	0	56	0%	170	0	170	0%

Green: decrease Red: increase
Counting Worship Sessions Jul 08

2nd Chance Re-Entry Sept 08

32

Jail East Disciplinary Data

March-09

Jail East Disciplinary Stats	This Month to Last Month				Same Month Last Year			Year to Date (Last Year/This Year)			
	Mar-09	Feb-09	(+/-)	% Chng	Mar-08	(+/-)	% Chng	2009	2008	(+/-)	% Chng
Disciplinary Hearings Scheduled	34	15	19	127%	41	-7	-17%	65	87	-22	-25%
Disciplinary Outcomes	16	8	8	100%	37	-21	-57%	35	73	-38	-52%
Sentenced Detention	5	1	4	400%	13	-8	-62%	11	28	-17	-61%
Probation	0	1	-1	-100%	2	-2	-100%	5	5	0	0%
Not Guilty	4	0	4	0%	0	4	0%	6	1	5	500%
Disciplinary Sanctions	7	6	1	17%	22	-15	-68%	13	39	-26	-67%
Dismissals	18	7	11	157%	4	14	350%	30	14	16	114%
Due to Procedural Violations	5	1	4	400%	0	5	0%	6	0	6	0%
Victims	6	2	4	200%	3	3	100%	11	8	3	38%
Released	7	4	3	75%	1	6	600%	13	4	9	225%
Medical	0	0	0	0%	0	0	0%	0	2	-2	-100%
Sanction by Floors	21	22	-1	-5%	19	2	11%	43	54	-11	-20%

Green: decrease Red: increase

Jail Medical Report - Jail East

March-09

Jail Medical Stats - JE	This Month to Last Month				Same Month Last Year			Year to Date (Last Year/This Year)			
	Mar-09	Feb-09	(+/-)	% Chng	Mar-08	(+/-)	% Chng	2009	2008	(+/-)	% Chng
14 Day Assessments	75	76	-1	-1%	88	-13	-15%	241	251	-10	-4%
Treatments	346	288	58	20%	77	269	349%	850	200	650	325%
Total Sick-Call	425	390	35	9%	397	28	7%	1267	1096	171	16%
MD Sick-Call	182	189	-7	-4%	185	-3	-2%	556	508	48	9%
Nurse Sick-Call	243	201	42	21%	212	31	15%	711	588	123	21%
Total Visits	310	214	96	45%	218	92	42%	772	586	186	32%
Walk-In Visits	66	82	-16	-20%	39	27	69%	202	119	83	70%
Dental Visits	32	12	20	167%	24	8	33%	71	80	-9	-11%
Psychiatric Visits	212	120	92	77%	155	57	37%	499	387	112	29%
Diabetic Insuline Injections	216	156	60	38%	274	-58	-21%	670	678	-8	-1%
Number of PPDs Given	896	821	75	9%	716	180	25%	2466	1966	500	25%
Number of PPDs Read	275	217	58	27%	233	42	18%	736	637	99	16%
Number of Positive PPDs	3	3	0	0%	4	-1	-25%	16	8	8	100%
Inmates on TB Meds	5	6	-1	-17%	1	4	400%	5	1	4	275%
Inmates on HIV Meds	3	3	0	0%	0	3	0%	3	1	2	350%
Clinic Appointments	40	48	-8	-17%	12	28	233%	135	46	89	193%
Total Referrals	15	4	11	275%	9	6	67%	32	27	5	19%
ER Referrals	14	4	10	250%	9	5	56%	30	27	3	11%
Offsite Mental Health Referrals	1	0	1	0%	0	1	0%	2	0	2	0%
MRSA	0	0	0	0%	3	-3	-100%	0	7	-7	-100%
Less than 30 days	0	0	0	0%	1	-1	-100%	0	4	-4	-100%
Greater than 30 days	0	0	0	0%	2	-2	-100%	0	3	-3	-100%
MRSA Requiring Isolation	0	0	0	0%	0	0	0%	0	0	0	0%
Total Wounds Cultured	0	0	0	0%	0	0	0%	0	0	0	0%
Total (+) Wound Cultures	0	0	0	0%	0	0	0%	0	0	0	0%

Green: decrease Red: increase

MRSA Requiring Isolation started Feb 2008

Total Wounds Cultured started Feb 2008

Total (+) Wound Cultures started Feb 2008

The End



Disclaimer:

This report does not represent or guarantee that the information is accurate, complete or current. Neither the Jail Report Card nor its creator shall be liable for any damages arising out of or in connection with the use of this report.